

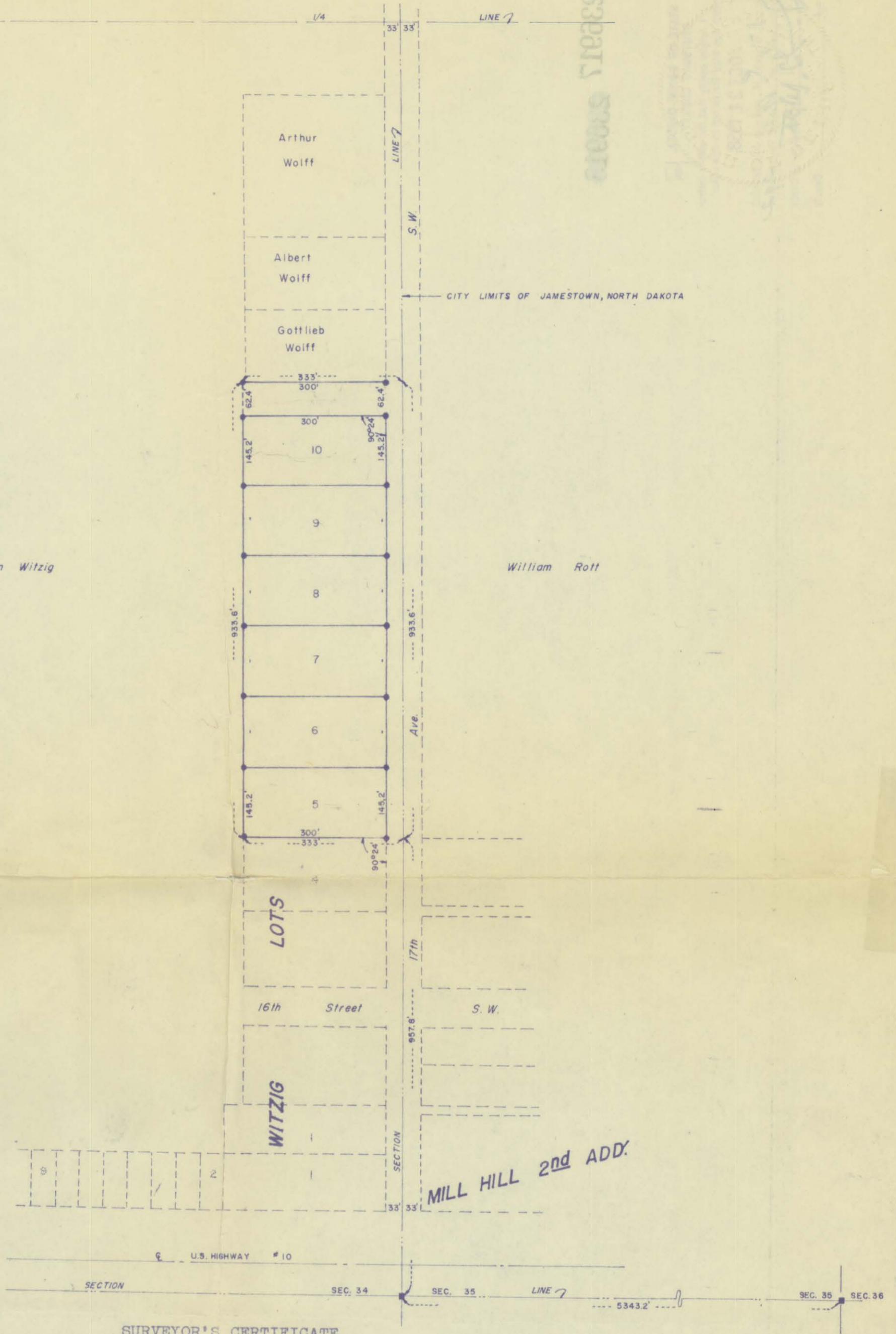
53443



PLAT OF
WITZIG LOTS 5 TO 10
 SE 1/4 SECTION 34 T140N R64W
 STUTSMAN COUNTY, NORTH DAKOTA
 SCALE 1" = 200'

Glen Witzig

William Rott



SURVEYOR'S CERTIFICATE

I, Johnny J. Klingenberg, a Registered Land Surveyor, in the State of North Dakota, hereby certify that this survey has been made by me or under my direct supervision and that the same is true and correct to the best of my knowledge and belief.

Date: October 23, 18

Johnny J. Klingenberg
 Johnny J. Klingenberg, RPE

Witzig Lots 5 to 10



236917 ~~236917~~

STATE OF NORTH DAKOTA, } ss.
STUTSMAN COUNTY.

I hereby certify that the within instrument was filed for record in this office

OCT 21 1958

at 1:00 o'clock P.M., and was duly recorded in Book 114 of Plat Page 292

By J. W. Witzig Register of Deeds
Deputy

Pa 1⁰⁰