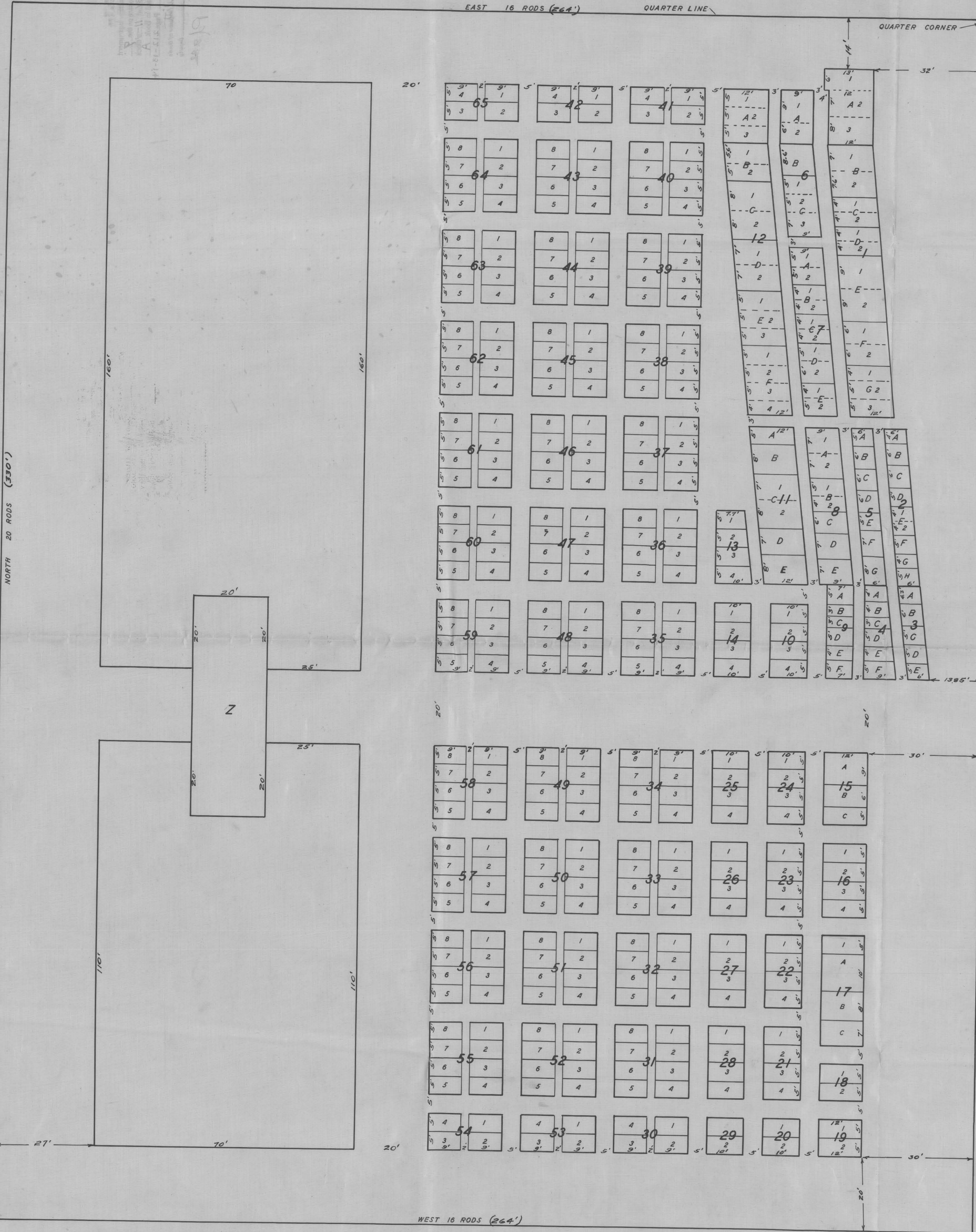


S T. M A R Y ' S C E M E T E R Y



BLOCK	DIVISION	LOT	BLOCK	DIVISION	LOT	BLOCK	DIVISION	LOT	BLOCK	DIVISION	LOT
1	A	1	15	A	1	37	A	1	51	A	1
1	B	2	16	B	2	38	B	2	52	B	2
1	C	3	17	C	3	39	C	3	53	C	3
1	D	4	18	D	4	40	D	4	54	D	4
1	E	5	19	E	5	41	E	5	55	E	5
1	F	6	20	F	6	42	F	6	56	F	6
2	A	1	21	A	1	43	A	1	57	A	1
2	B	2	22	B	2	44	B	2	58	B	2
2	C	3	23	C	3	45	C	3	59	C	3
2	D	4	24	D	4	46	D	4	60	D	4
2	E	5	25	E	5	47	E	5	61	E	5
2	F	6	26	F	6	48	F	6	62	F	6
3	A	1	27	A	1	49	A	1	63	A	1
3	B	2	28	B	2	50	B	2	64	B	2
3	C	3	29	C	3	51	C	3	65	C	3
3	D	4	30	D	4	52	D	4			
3	E	5	31	E	5	53	E	5			
3	F	6	32	F	6	54	F	6			
4	A	1	33	A	1	55	A	1			
4	B	2	34	B	2	56	B	2			
4	C	3	35	C	3	57	C	3			
4	D	4	36	D	4	58	D	4			
4	E	5	37	E	5	59	E	5			
4	F	6		F	6	60	F	6			
5	A	1		A	1	61	A	1			
5	B	2		B	2	62	B	2			
5	C	3		C	3	63	C	3			
5	D	4		D	4	64	D	4			
5	E	5		E	5	65	E	5			
5	F	6		F	6		F	6			
6	A	1		A	1		A	1			
6	B	2		B	2		B	2			
6	C	3		C	3		C	3			
6	D	4		D	4		D	4			
6	E	5		E	5		E	5			
6	F	6		F	6		F	6			
7	A	1		A	1		A	1			
7	B	2		B	2		B	2			
7	C	3		C	3		C	3			
7	D	4		D	4		D	4			
7	E	5		E	5		E	5			
7	F	6		F	6		F	6			
8	A	1		A	1		A	1			
8	B	2		B	2		B	2			
8	C	3		C	3		C	3			
8	D	4		D	4		D	4			
8	E	5		E	5		E	5			
8	F	6		F	6		F	6			
9	A	1		A	1		A	1			
9	B	2		B	2		B	2			
9	C	3		C	3		C	3			
9	D	4		D	4		D	4			
9	E	5		E	5		E	5			
9	F	6		F	6		F	6			
10	A	1		A	1		A	1			
10	B	2		B	2		B	2			
10	C	3		C	3		C	3			
10	D	4		D	4		D	4			
10	E	5		E	5		E	5			
10	F	6		F	6		F	6			
11	A	1		A	1		A	1			
11	B	2		B	2		B	2			
11	C	3		C	3		C	3			
11	D	4		D	4		D	4			
11	E	5		E	5		E	5			
11	F	6		F	6		F	6			
12	A	1		A	1		A	1			
12	B	2		B	2		B	2			
12	C	3		C	3		C	3			
12	D	4		D	4		D	4			
12	E	5		E	5		E	5			
12	F	6		F	6		F	6			
13	A	1		A	1		A	1			
13	B	2		B	2		B	2			
13	C	3		C	3		C	3			
13	D	4		D	4		D	4			
13	E	5		E	5		E	5			
13	F	6		F	6		F	6			
14	A	1		A	1		A	1			
14	B	2		B	2		B	2			
14	C	3		C	3		C	3			
14	D	4		D	4		D	4			
14	E	5		E	5		E	5			
14	F	6		F	6		F	6			

A TRACT OF LAND IN STUTSMAN COUNTY, NORTH DAKOTA, LYING IN THE NE 1/4 OF THE SE 1/4 OF SECTION 10, TWP. 143 N. R. 63 W., MORE PARTICULARLY DESCRIBED AS FOLLOWS: BEGINNING AT THE NORTHEAST (NE) CORNER OF THE SOUTHEAST QUARTER (SE 1/4) OF SECTION 10 IN TOWNSHIP ONE HUNDRED FORTY THREE (143) RANGE SIXTY THREE (63) AND RUNNING SOUTH ALONG THE EAST LINE OF SAID QUARTER SECTION TWENTY (20) RODS; THENCE DUE WEST SIXTEEN (16) RODS; THENCE NORTH TWENTY (20) RODS; THENCE EAST ON THE NORTH LINE OF SAID QUARTER SECTION SIXTEEN (16) RODS TO THE PLACE OF BEGINNING. SAID TRACT OF LAND CONTAINS TWO (2) ACRES.

I HEREBY CERTIFY THAT ON SEPTEMBER 30 AND OCTOBER 1, 1931, THE FOREGOING DESCRIBED LAND WAS SURVEYED UNDER MY DIRECTION AS "ST. MARY'S CEMETERY" AND THAT I DID MAKE THE ATTACHED PLAT ACCORDING TO SUCH SURVEY, AND THAT THE SAID SURVEY AND SAID PLAT ARE TRUE AND CORRECT TO THE BEST OF MY KNOWLEDGE AND BELIEF.

SUBSCRIBED AND SWORN TO BEFORE ME THIS 8TH DAY OF OCTOBER, 1931.

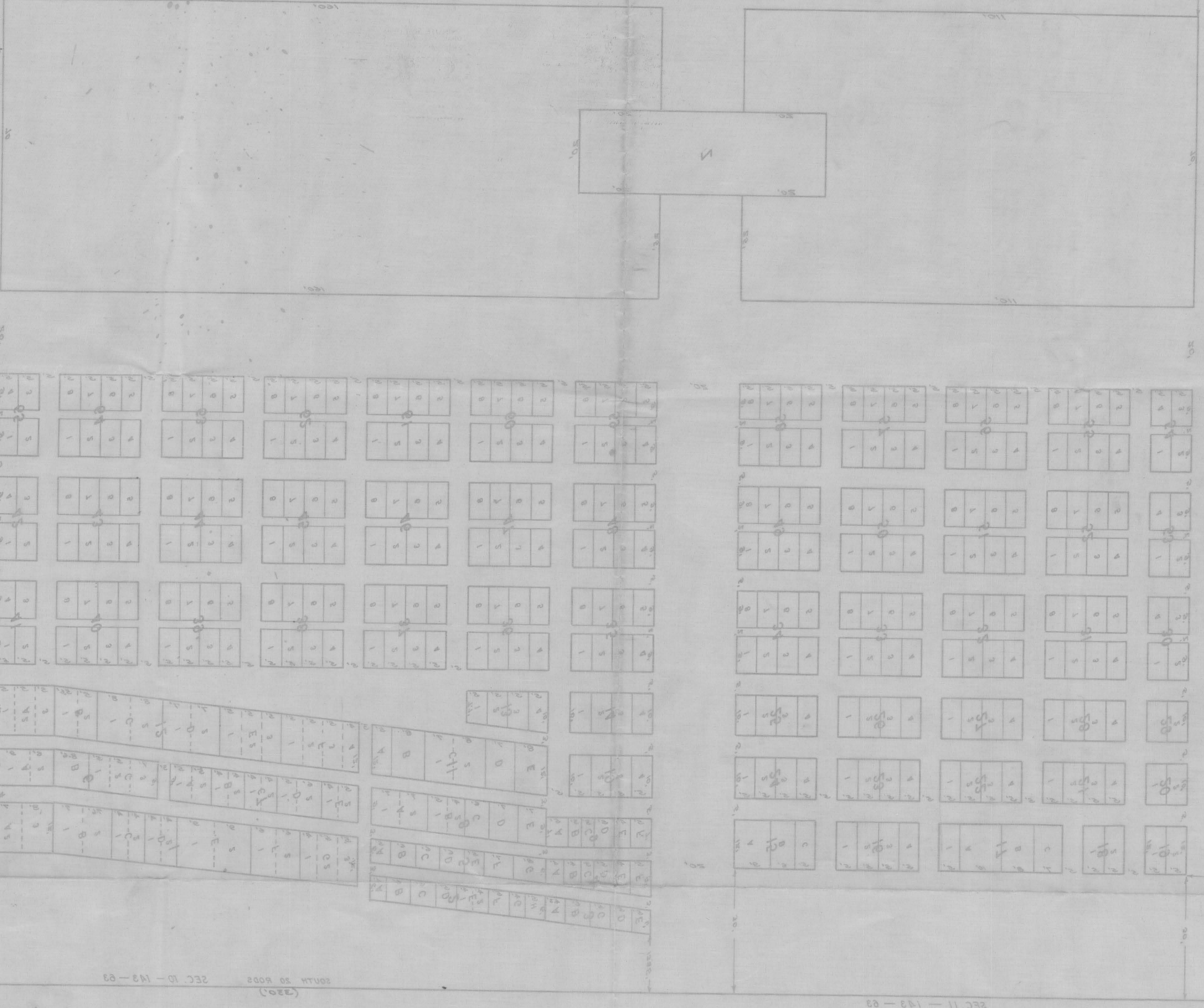
Bliss A. Diesthoff
NOTARY PUBLIC BARNES COUNTY

J. W. Bliss
SURVEYOR

DAKOTA ENGINEERING AND CONSTRUCTION CO.
J. W. BLISS
P. M. BARNES
CONSULTING ENGINEERS
VALLEY CITY NORTH DAKOTA

COUNTY OF STUTSMAN
STATE OF NORTH DAKOTA
I hereby certify that the instrument
was filed for record in this office on the 9
day of Oct 1937 at 11:30 AM
C. M. ... recorded in Book A
Plats Page 212-13-14
Erving L. Witt
Register of Deeds

2 T. W. A. R. K. 2
C E W E T E R K



THE COMMISSIONERS EXAMINE THE PLAT AND FIND IT TO BE IN ACCORDANCE WITH THE LAWS OF NORTH DAKOTA AND THE RULES OF THE REGISTER OF DEEDS. THE PLAT IS HEREBY APPROVED AND THE REGISTER OF DEEDS HAS CAUSED THE SAME TO BE RECORDED IN BOOK A PLATS PAGE 212-13-14.

WITNESSED MY HAND AND SEAL AT BISMARCK NORTH DAKOTA THIS 9th DAY OF OCTOBER 1937.

Erving L. Witt
Register of Deeds



SECTION	10	11	12	13	14	15	16	17	18	19	20	21	22	23	24	25	26	27	28	29	30	31	32	33	34	35	36	37	38	39	40	41	42	43	44	45	46	47	48	49	50	51	52	53	54	55	56	57	58	59	60	61	62	63	64	65	66	67	68	69	70	71	72	73	74	75	76	77	78	79	80	81	82	83	84	85	86	87	88	89	90	91	92	93	94	95	96	97	98	99	100
10	11	12	13	14	15	16	17	18	19	20	21	22	23	24	25	26	27	28	29	30	31	32	33	34	35	36	37	38	39	40	41	42	43	44	45	46	47	48	49	50	51	52	53	54	55	56	57	58	59	60	61	62	63	64	65	66	67	68	69	70	71	72	73	74	75	76	77	78	79	80	81	82	83	84	85	86	87	88	89	90	91	92	93	94	95	96	97	98	99	100	

DAKOTA ENGINEERING AND CONSTRUCTION CO.
NORTH DAKOTA
CONSULTING ENGINEERS
F. M. BARNES