

SCALE 1" = 100'  
ALL DISTANCES ARE STRAIGHT LINE

See doc. 246599  
& 24 replatted Riverview 3rd Addition

NOTE:  
DIMENSIONS SHOWN THUS (000.0) REPRESENT DISTANCES AS PER ORIGINAL PLAT WHICH HAVE BEEN CHANGED OR CORRECTED ON THIS PLAT

## AMENDED AND CORRECTED PLAT OF RIVERVIEW SECOND ADDITION TO THE CITY OF JAMESTOWN, NORTH DAKOTA

DECLARATION OF PLAT

AMENDMENT TO CORRECTED PLAT OF RIVERVIEW SECOND ADDITION TO THE CITY OF JAMESTOWN, NORTH DAKOTA

BE IT KNOWN to all men that on this 17th day of April, 1967, Johnny Klingenberg, of North Central Consultants, Jamestown, North Dakota caused the attached amended plat to be made with corrections as shown hereon. Further, that the corrections were made from an actual survey of the properties involved and that corrected lot lines, dimensions, etc., are as indicated hereon.

By Johnny Klingenberg R. P. E. & R. L. S. #471

RIVERVIEW SECOND - AMENDED & CORRECTED  
Riverview 2nd - Amended & Corrected

X 14866

STATE OF NORTH DAKOTA,  
STURISMAN COUNTY,  
I hereby certify that the within instru-  
ment was filed for record in this office.

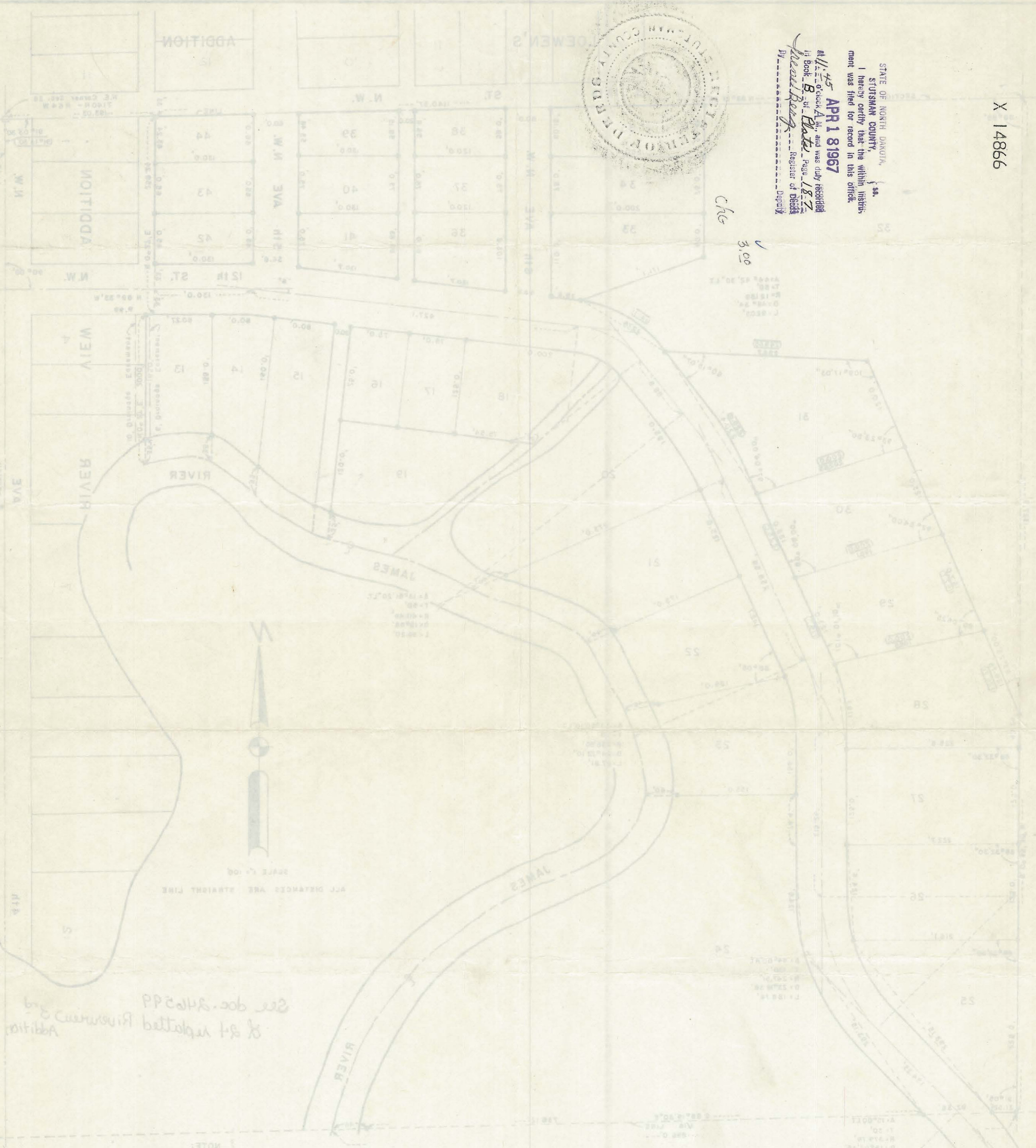
APR 1 8 1967

Attest: I, Robert A. M., and was duly recorded  
in Book B-1 at Plate Page 187  
By Paul Berg Register of Deeds  
Depository



3.00  
Chg

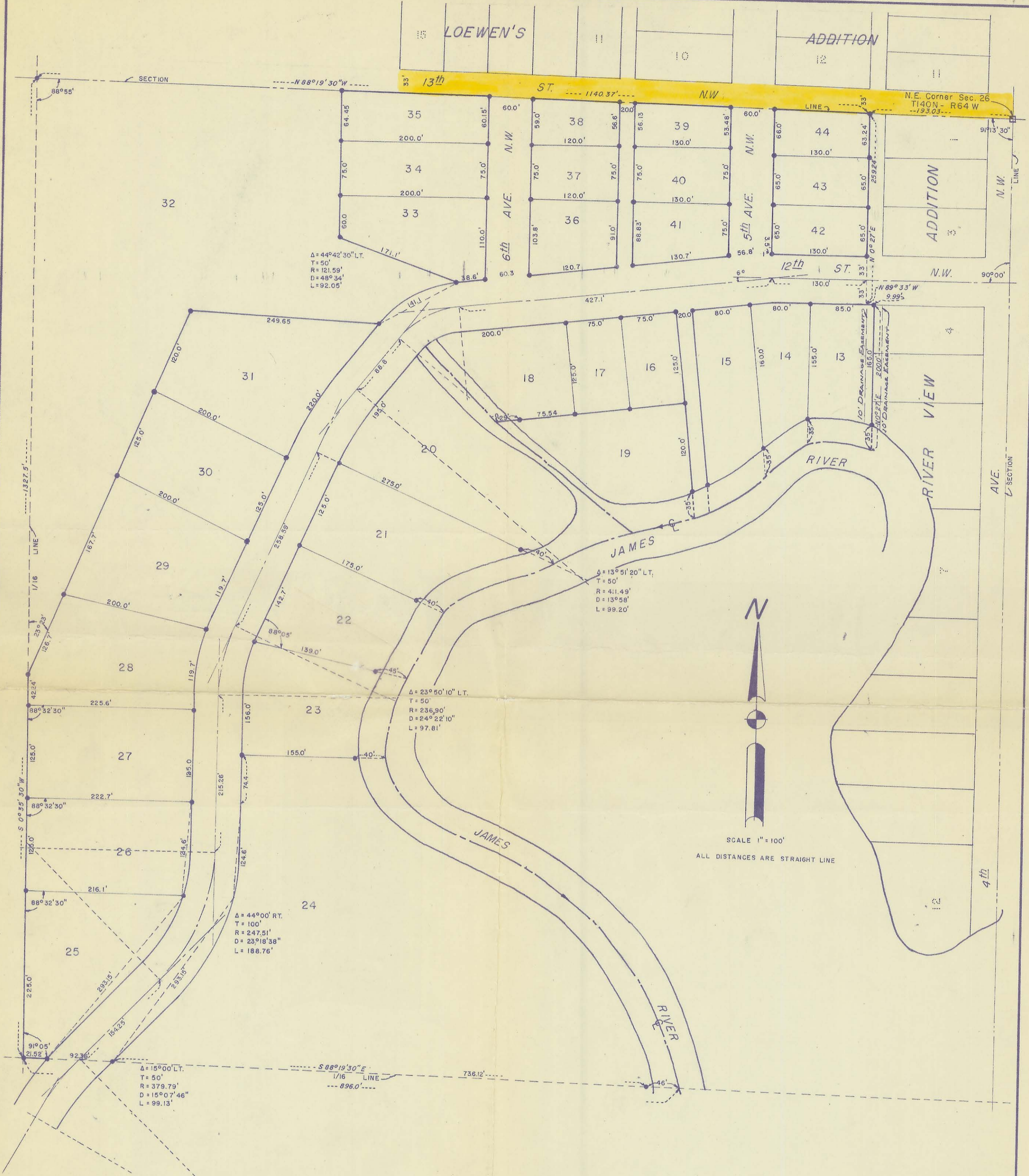
CITY OF JAMESTOWN, NORTH DAKOTA  
TO THE  
RIVERVIEW SECOND ADDITION  
CORRECTED PLAT OF  
AMENDED AND



NOTE:  
DIMENSIONS SHOWN THUS (5000) REPRESENT  
DISTANCES AS PER ORIGINAL PLAT WHICH HAVE  
BEEN CHANGED OR CORRECTED ON THIS PLAT.

See doc. 24622  
& 24 related Riverview 2nd  
Addition

See corrected Plat on Pg. 170 + corrected + amended Plat on Pg. 187 as to dimensions  
Plat Book B



### RIVERVIEW SECOND ADDITION TO THE CITY OF JAMESTOWN, NORTH DAKOTA

See use of area shown shaded described as follows: Thirteenth St. NW from N. line of 4th ave. N.W. lying between lot 1 of Riverview add. + 35, 38, 39, 44 of Riverview Second + Lots 11-12 Blk. 1 + Lots 10-11-12-14-15 - Blk. 2 of Loewen's add in Blk. 192 deeds Pg. 115-116.

DECLARATION OF PLAT

Plat of Riverview Second Addition to the City of Jamestown, North Dakota.

John E. McElroy and Kenneth M. Moran as owners and proprietors of the land hereinafter described, together with Floyd D. Larson, North Central Engineers, Registered Land Surveyor, in the State of North Dakota, hereby declare and make known that said owners and proprietors recently caused to be laid out, platted and surveyed, a plat of Riverview Second Addition to the City of Jamestown, North Dakota; and this plat thereof which is hereto attached was made by the said Floyd D. Larson, in accordance with the statutes of the State of North Dakota and ordinances of the City of Jamestown, North Dakota, in such case, made and provided, a description of the situation and boundaries of said Riverview Second Addition being as follows, to wit:

That said plat is part of the Northeast Quarter (NE 1/4) of Section 26, T140N, R64W, in Stutsman County, North Dakota, and is more particularly described as follows, to wit:

Commencing at the Northeast corner of Section 26, T140N, R64W, thence North 88° 19' 30" West along Section line a distance of 193.03 feet to the point of beginning; thence continuing North 88° 19' 30" West along said Section line a distance of 1140.37 feet to a point; thence South 0° 35' 30" West a distance of 1327.5 feet to a point; thence South 88° 19' 30" East a distance of 896.0 feet to the approximate center of the James River; thence continuing along the centerline of the James River as shown on the plat to a point which is the Southeast corner of Lot 13 and which is located 183.04 feet West on Section line from the Northeast corner of Section 26, T140N, R64W and 459.24 feet South on a line parallel to the East line of said Section from the Northeast corner of said Section; thence North 0° 27' East a distance of 200.0 feet to a point; thence North 89° 33' West a distance of 9.99 feet; thence North 0° 27' East a distance of 259.24 feet to the point of beginning.

That the foregoing is a true and accurate description of the situation and boundaries of said Riverview Second Addition.

All the streets and avenues and alleys and all lots are particularly described and set forth on the plat, with the names, widths, courses, boundaries and extent thereof, and the lots being numbered in progressive numbers. The figures representing the distances, length and breadth, denote feet or decimals thereof. All streets and alleys are dedicated to the City of Jamestown in trust for the public use.

And the said Floyd D. Larson as surveyor aforesaid, further certifies that the plat of said Addition was made by him from an actual survey thereof and the same is, to his knowledge and belief, correct and true.

IN WITNESS WHEREOF said Proprietors and Owners, and said Floyd D. Larson, Registered Land Surveyor, in the State of North Dakota, have executed this instrument this 1 day of October, A.D., 1958.

By John E. McElroy

Kenneth M. Moran

By Floyd D. Larson
Registered Land Surveyor
North Central Engineers

STATE OF NORTH DAKOTA }
COUNTY OF STUTSMAN } ss.

On this 1st day of October, A.D., 1958, before me, a Notary Public in and for said County and State, personally appeared John E. McElroy, known to me to be the person, who is described in and who joined in the execution of the foregoing instrument, and he acknowledged to me that he executed the same.

(Seal)

Lilly Olson
Notary Public
My commission expires 3/20/60

On this 1st day of October, A.D., 1958, before me, a Notary Public in and for said County and State, personally appeared Kenneth M. Moran, known to me to be the person, who is described in and who joined in the execution of the foregoing instrument, and he acknowledged to me that he executed the same.

(Seal)

Lilly Olson
Notary Public
My commission expires 3/20/60

On this 1st day of October, A.D., 1958, before me, a Notary Public in and for said County and State, personally appeared Floyd D. Larson, known to me to be the person, who is described in and who joined in the execution of the foregoing instrument, and he acknowledged to me that he executed the same.

(Seal)

Arthur D. Wolf
Notary Public
My commission expires 1960

CERTIFICATE OF APPROVAL

CITY OF JAMESTOWN }
STATE OF NORTH DAKOTA } ss.

By Resolution duly passed by the City Planning Commission of Jamestown, North Dakota on 6th day of October 1958, the attached plat of Riverview Second Addition to the City of Jamestown, North Dakota, was duly approved and accepted.

Dated: Oct. 6, 1958
Attest: [Signature]
City Auditor

G. J. Fetore
President

By Resolution duly passed by the City Council of Jamestown, North Dakota, on the 6th day of October 1958, the attached plat of Riverview Second Addition to the City of Jamestown, North Dakota, was duly approved and accepted and the plat ordered filed in the office of the Register of Deeds of Stutsman County, copy of same to be filed in the office of the City Auditor and City Engineer.

(Seal)

Dated: October 8, 1958

Attest: [Signature]
City Auditor

Wm. Westley
Mayor
City Engineer

STATE OF NORTH DAKOTA,  
STUTSMAN COUNTY,  
I hereby certify that the within instru-  
ment was filed for record in this office  
OCT 13 1958

236761

3-01404411  
Book of Pages Page 4243  
Register of Deeds  
Deputy

PL 14 25

That the foregoing is a true and accurate description of the situation and boundaries of said River View Second Addition.

That the streets and avenues and alleys and all lots are particularly described and set forth on this plat with the courses, widths, courses, boundaries and extent thereof, and the lots being numbered in consecutive numbers. The figures representing the distance, length and breadth, denote feet or decimal parts thereof. All streets and alleys are dedicated to the City of Jamestown in fee for the public use.

and the said Fred D. Larson as surveyor, I, Fred D. Larson, do hereby certify that the plat of said addition was made by him from an actual survey taken and the same is to his knowledge and belief, correct and true.

IN WITNESS WHEREOF, said Registrar and I, Fred D. Larson, do hereby certify this instrument this 13th day of October, 1958.

John E. Larson  
Registrar



CORRECTED PLAT OF  
 RIVERVIEW SECOND ADDITION  
 TO THE  
 CITY OF JAMESTOWN, NORTH DAKOTA

\*See Riverview 3rd  
 246599  
 & 24 replatted to  
 Riverview 3rd

DECLARATION OF PLAT

CORRECTION OF PLAT OF RIVERVIEW SECOND ADDITION TO THE CITY OF JAMESTOWN, NORTH DAKOTA

Be it known to all men present that the City Council of the City of Jamestown, having declared it by resolution to be necessary to correct the Plat of Riverview Second Addition to the City of Jamestown by correcting the boundary of Lot 13 thereof as the same is actually and physically laid out, that Ross Milne, North Central Engineers of the City of Jamestown, North Dakota has caused the attached corrected plat to be made in accordance with the statutes of the State of North Dakota and ordinances of the City of Jamestown, North Dakota, and in such case, made and provided, a corrected plat of the situation and boundaries of said corrected Lot 13 Riverview Second Addition.

And that Ross Milne, North Central Engineers, Jamestown, North Dakota, a registered Land Surveyor and Professional Engineer, further certifies that the corrected plat of the boundary of Lot 13, Riverview Second Addition was made by him from an actual survey thereof and the same is, to his knowledge and belief, correct and true.

IN WITNESS THEREOF said Ross Milne, North Central Engineers, Jamestown, North Dakota, a Registered Land Surveyor and Professional Engineer has executed this instrument this 6<sup>th</sup> day of JANUARY, A.D. 1965.

By Ross Milne  
Ross Milne  
Registered Land Surveyor  
and Professional Engineer  
North Central Engineers  
Jamestown, North Dakota

STATE OF NORTH DAKOTA }  
COUNTY OF STUTSMAN } ss.

On this 7<sup>th</sup> day of January, A.D. 1965 before me, a Notary Public in and for said County and State, personally appeared Ross Milne, known to me to be the person who is described in and who executed the foregoing instrument, and he acknowledged to me that he executed the same.

Olevis Rath  
Notary Public  
My Commission Expires 9-1-1966

CERTIFICATE OF APPROVAL

CITY OF JAMESTOWN }  
STATE OF NORTH DAKOTA } ss.

By Resolution duly passed by the City Planning Commission of Jamestown, North Dakota on 16<sup>th</sup> day of Dec, 1964, the attached plat of Corrected Plat of Riverview Second Addition to the City of Jamestown, North Dakota was duly approved and accepted.

Dated: Dec. 16, 1964

Attest: Ray C. Brislen City Auditor  
Nick Stout President

By Resolution duly passed by the City Council of Jamestown, North Dakota, on the 1<sup>st</sup> day of Feb, 1965, the attached plat of Corrected Plat of Riverview Second Addition to the City of Jamestown, North Dakota was duly approved and accepted and the plat ordered filed in the office of the Register of Deeds of Stutsman County, copy of same to be filed in the office of the City Auditor and City Engineer.

Dated: Nov. 9, 1965

Attest: Ray C. Brislen City Auditor  
Wm. W. Kelly Mayor  
Donald Wenas City Engineer

NOV 12 1965  
STUTSMAN COUNTY  
STATE OF NORTH DAKOTA

Corrected Plat of Riverview Second Addition

X 10938

Corrected Plat of Riverview Second Add.

X 10638

STATE OF NORTH DAKOTA, } ss.  
 STUTSMAN COUNTY, }  
 I hereby certify that the within instrument was filed for record in this office.

NOV 1 5 1966  
 at 5 o'clock P.M., and was duly recorded  
 in Book B of Plat S Page 170-171  
 By Wm. B. King Registrar of Deeds  
 Deputy

Pa 300

*[Faint, illegible text and markings, possibly bleed-through from the reverse side of the page.]*