

MILLARTON

SEVERN TWP.

137-64

Scale: 400ft to 1 in

Selma Burchard

School

E.F. Redmann

17

B-174-522

MIDLAND R.R.

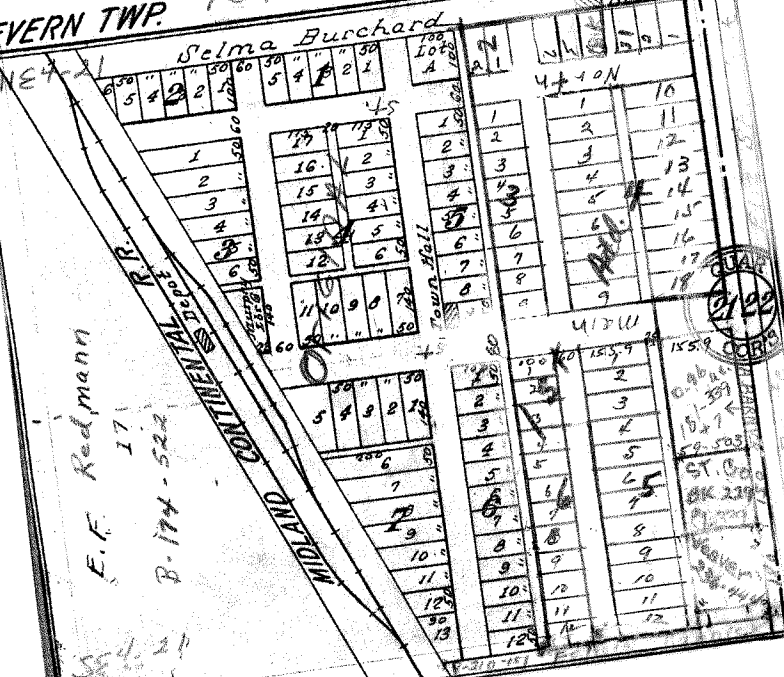
MIDLAND

4+10N

417W



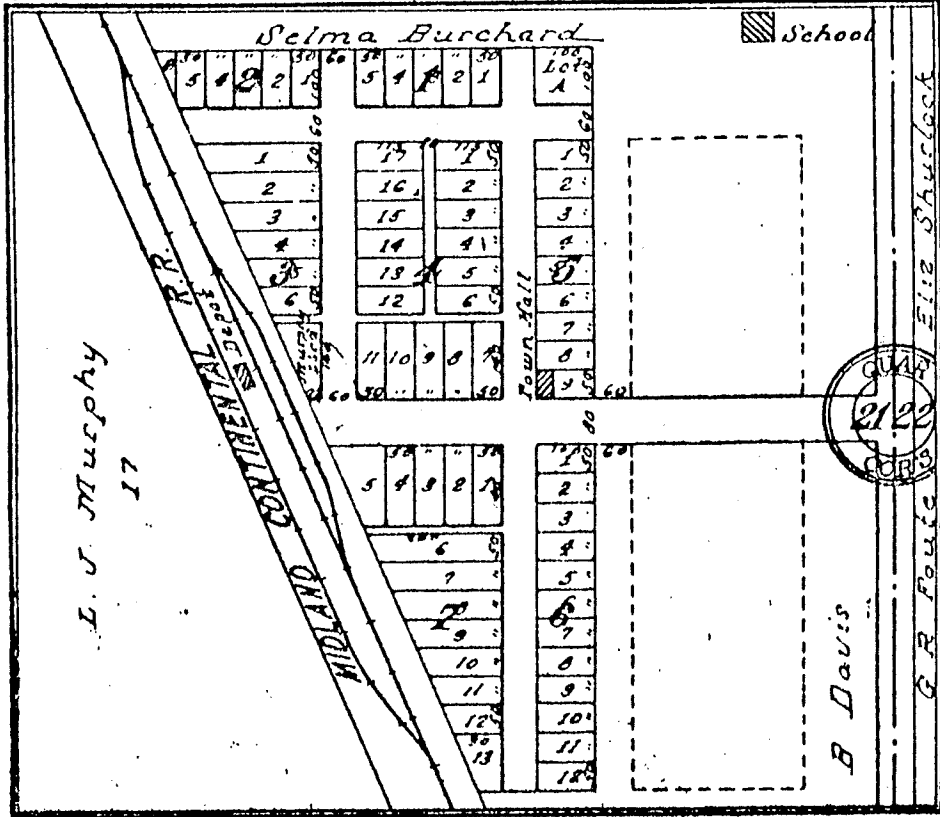
ST. CO.

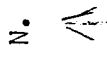


MILLARTON

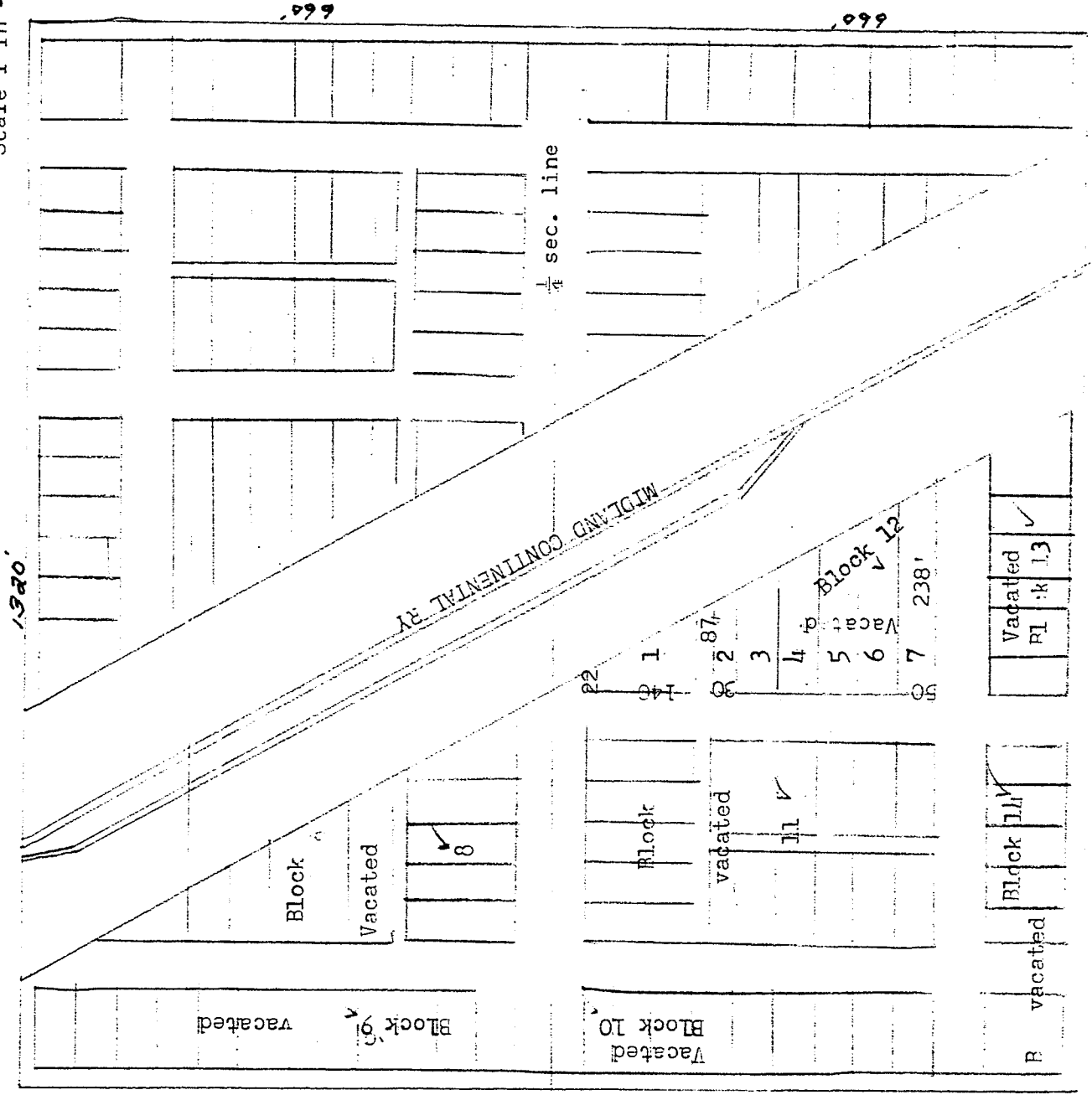
SEVERN TWP.

Scale 400ft to in





Scale 1 in = 200'



	Vacated	✓
	RI	13

B	vacated	Block 11	✓
---	---------	----------	---

#F7518

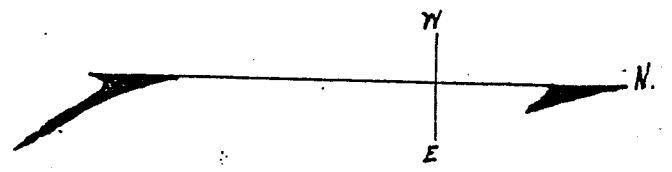
Dakota Land and Mortgage Co

First Addition
to the

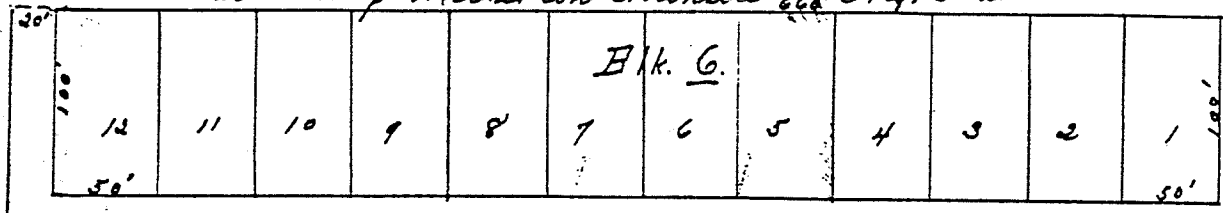
Townsite of Millarton, N.D.

Scale, 1" = 100'

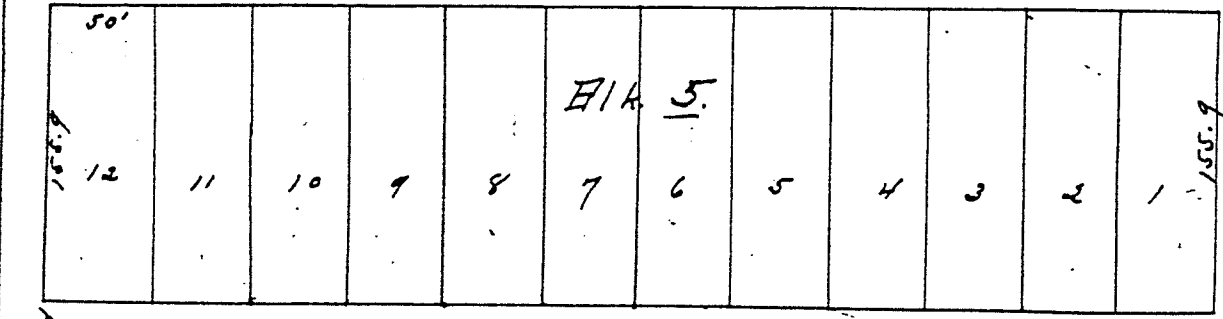
#F7518



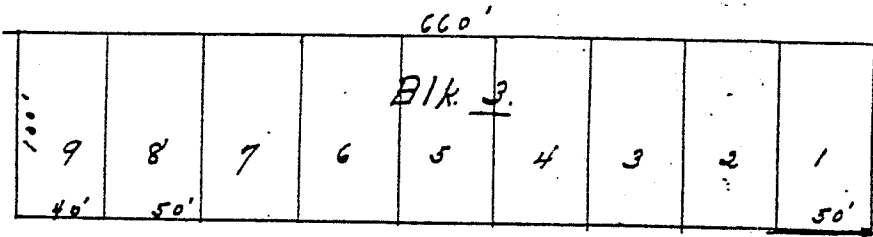
East line of Millarton Townsite see Orig. Plat



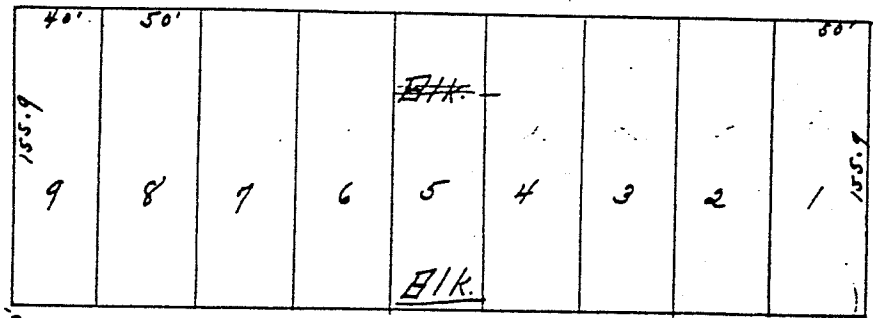
First



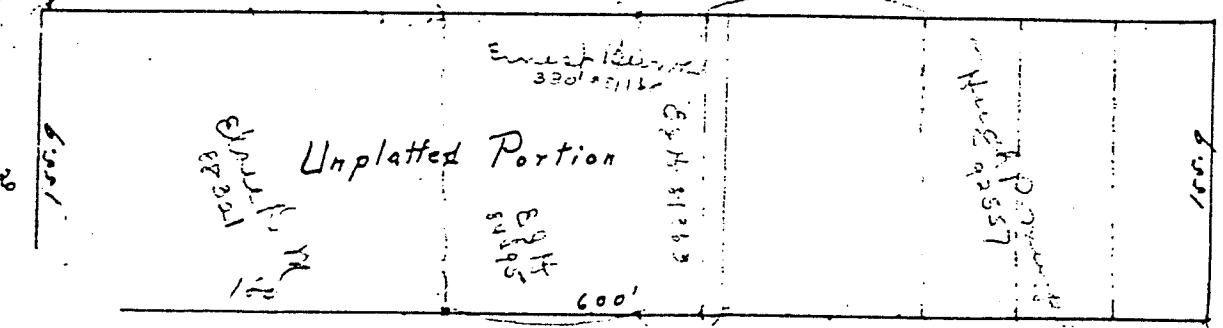
Main St.
424.8'



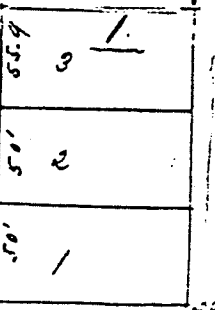
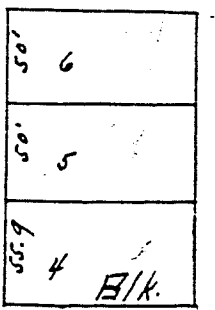
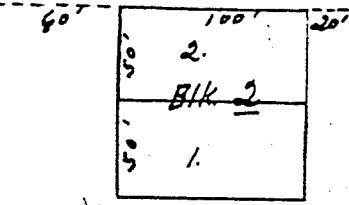
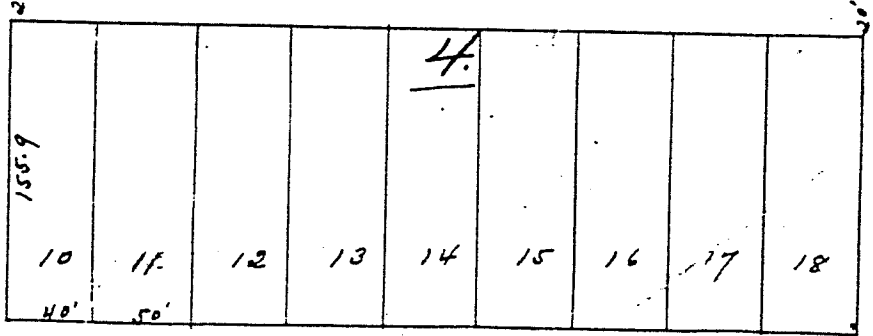
Ave.



North St.



East line of Sec. 21.



Twp. 137 N. Range 64 W