

Sec 31-32 - 140-68

MEDINA

CITY of
Medina
216-507

660
660

Edward
Hoffmann
500
129-295

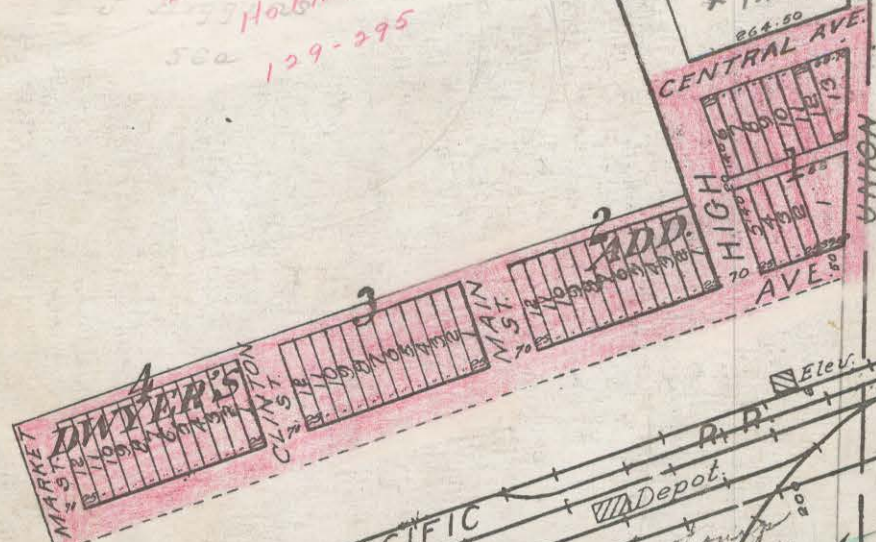
SE 4-31
Community
Development
Corp - 305-501
Comm. Dev 204-592
ST. 70
Claude Hilman
Reserved
for
Cemetery
X92313
264.50

S 1/4 - 32

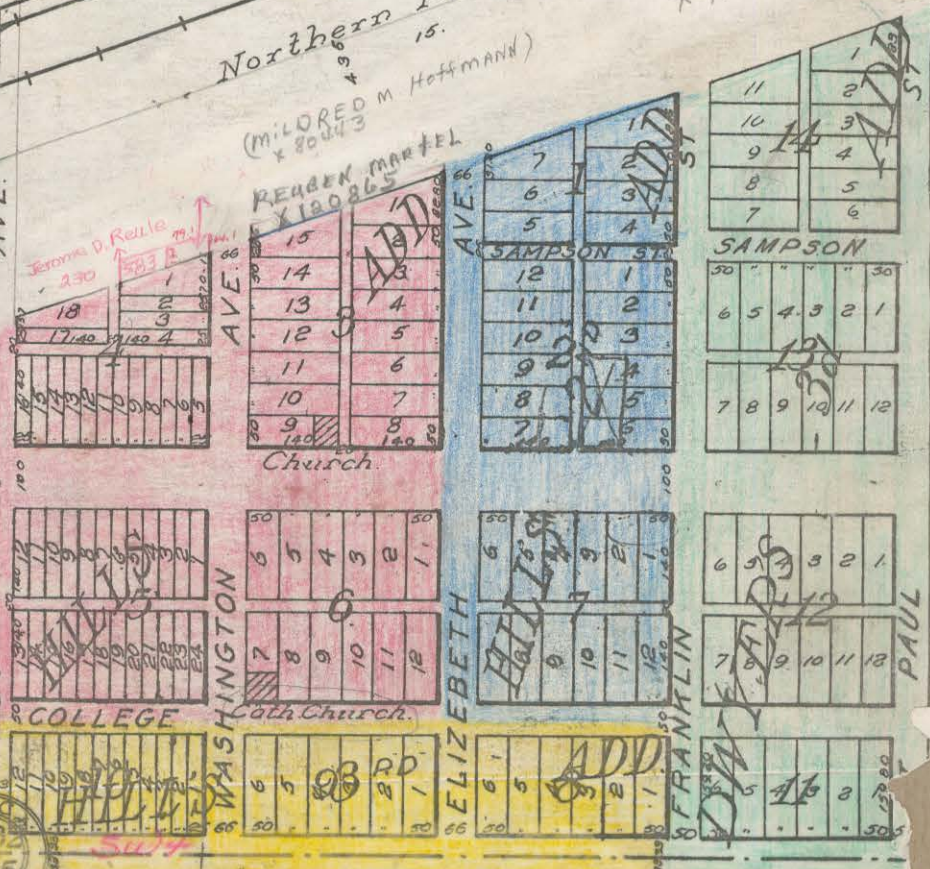
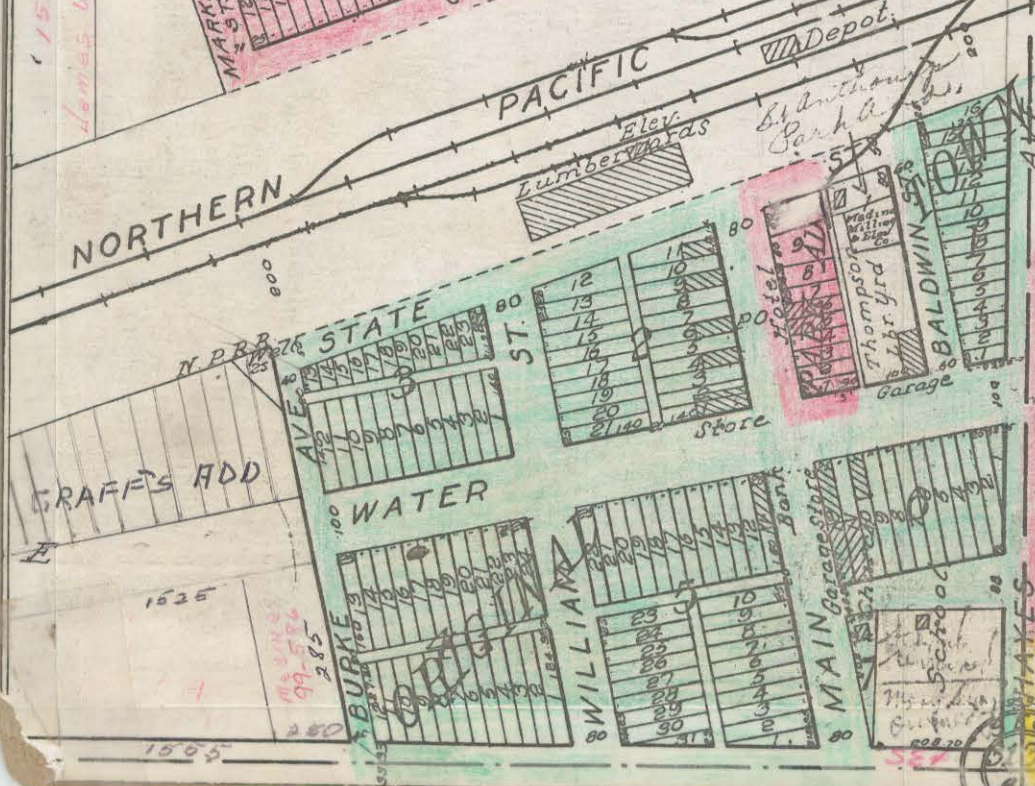
Oscar Maser
BK 183-278

198.60

151 Acres
James Wittmer 181-882



Northern Pacific R.R.
JANET WANZEL
X71892



2000-4

St Marys Cemetery - Book 81 Reeds pg 77

English Church - Block 7

Book 137 - Page 192

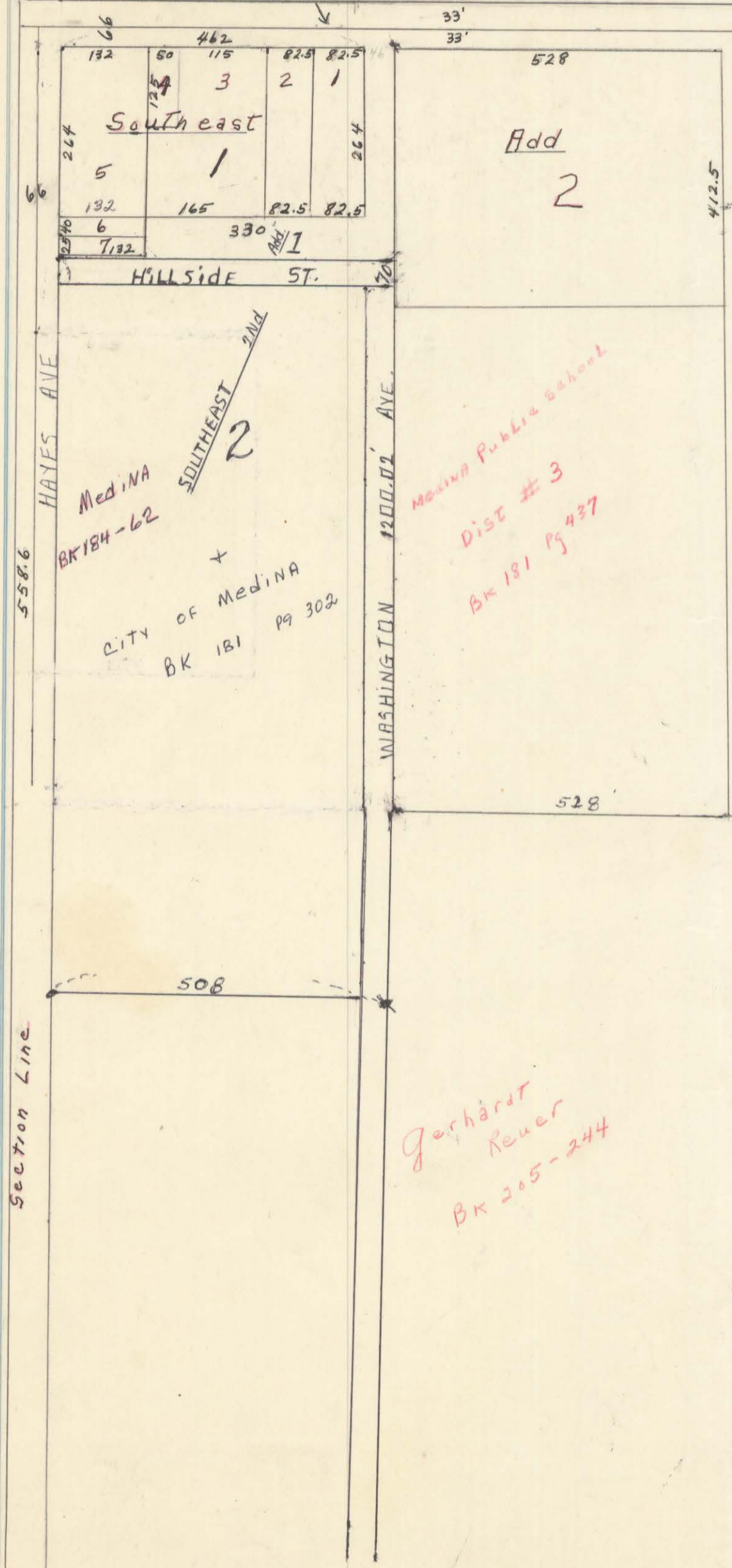
Medina Cenex Book 200 pg 371

Medina

NW corner 5

Section Line

NW⁴ 5-139-68



Quarter section Line

MEDINA
NORTH DAKOTA



S.W. CORNER SE 1/4 SECTION 31

1/4 LINE

NORTH CENTRAL

REGISTERED

MEDINA CHEESE PLANT

SEWAGE TREATMENT FACILITIES

MEDINA, NORTH DAKOTA

HOUSTON ENGINEERING

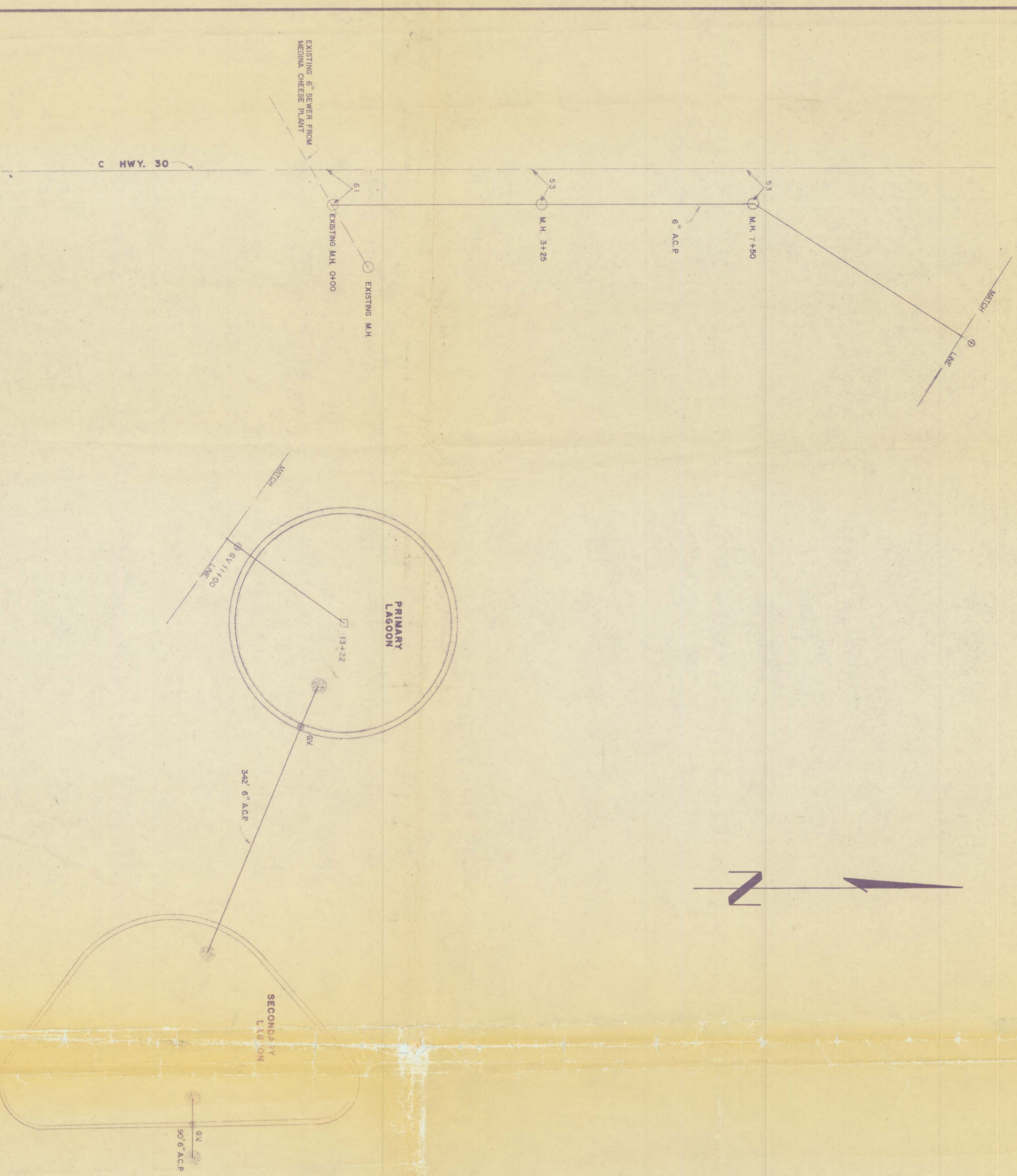
CONSULTING

ENGINEERS

Richard J. Cooper

FARGO

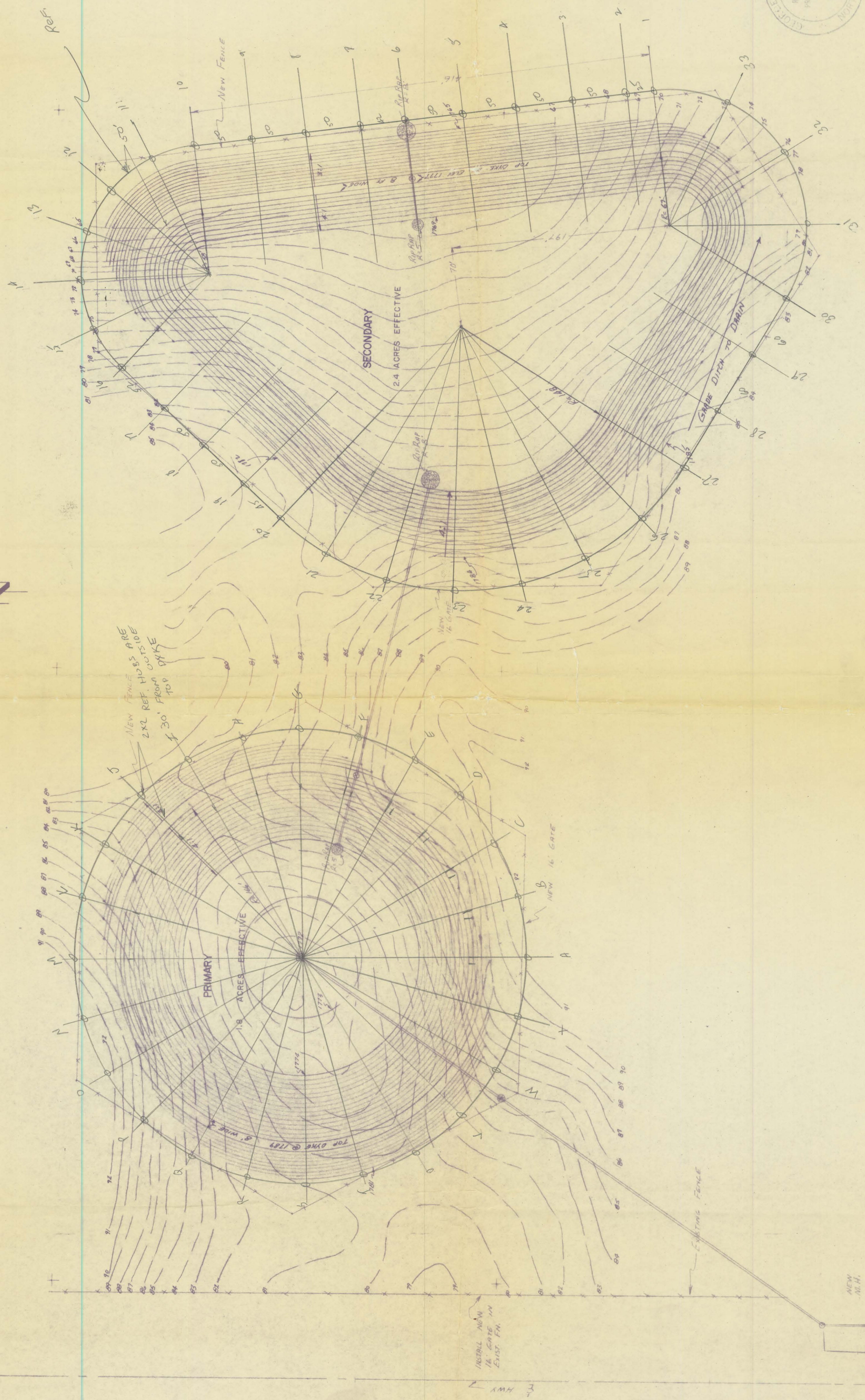
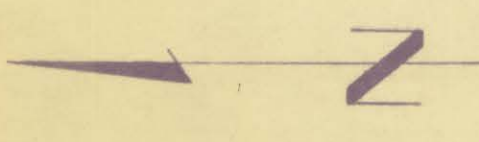
NORTH DAKOTA



As Staked 8-30-68

HE

ARE FROM TOP DIKE
2x2 REF 50' OUTSIDE

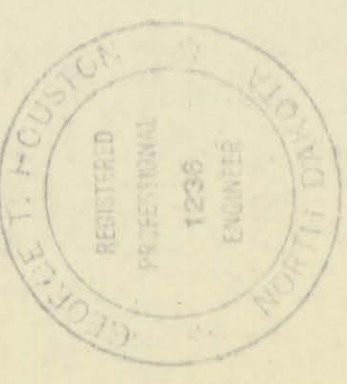


NEW FENCE ARE
2x2 REF. HOS. ARE
30' FROM DIKE

NEW 1/2 GATE
750' TO EXIST. M.H.

NEW M.H.

55°



0-2x2 REF. HUB.

AS STAGED 8-30-68

**MEDINA, ND. CHEESE PLANT
SEWAGE DISPOSAL FACILITIES**

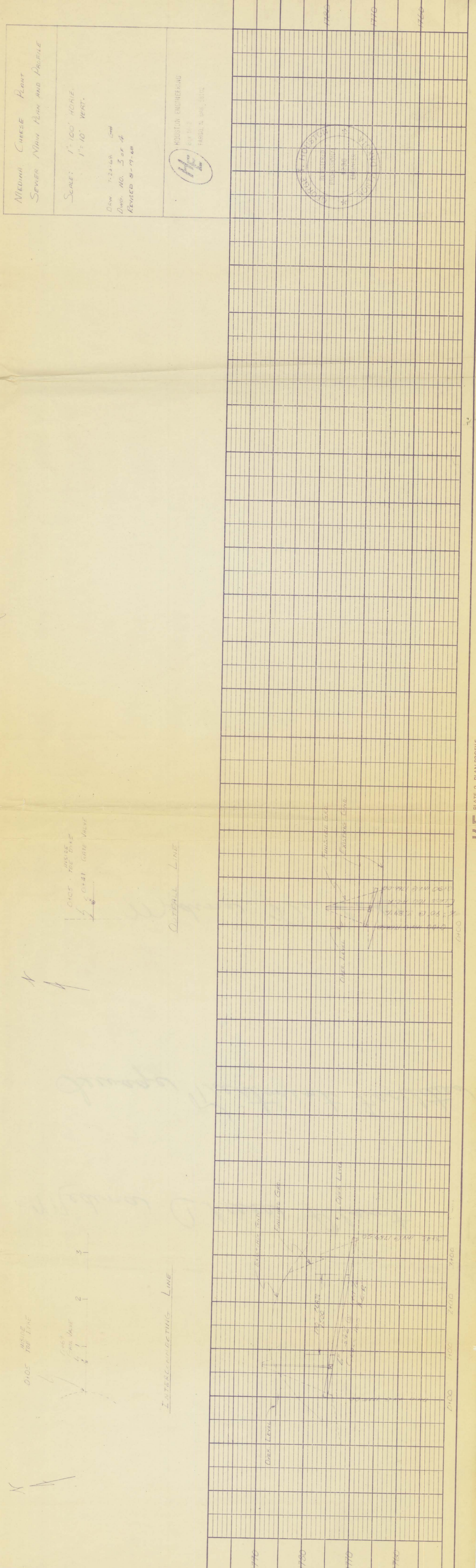
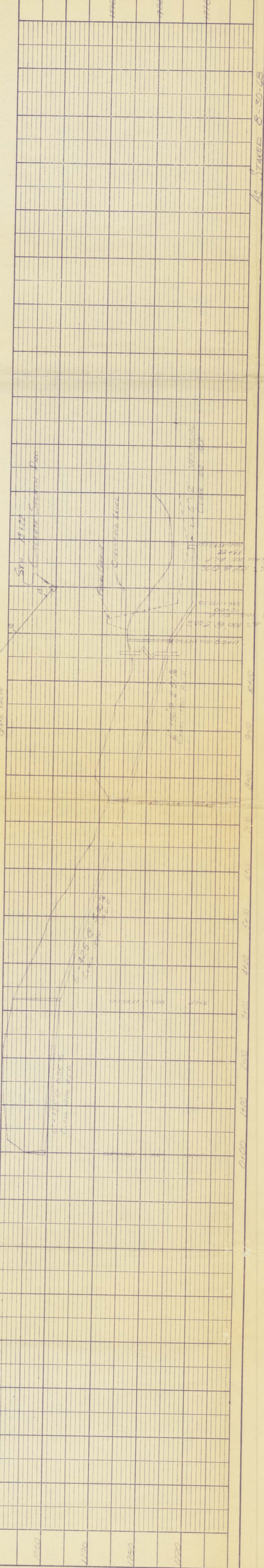
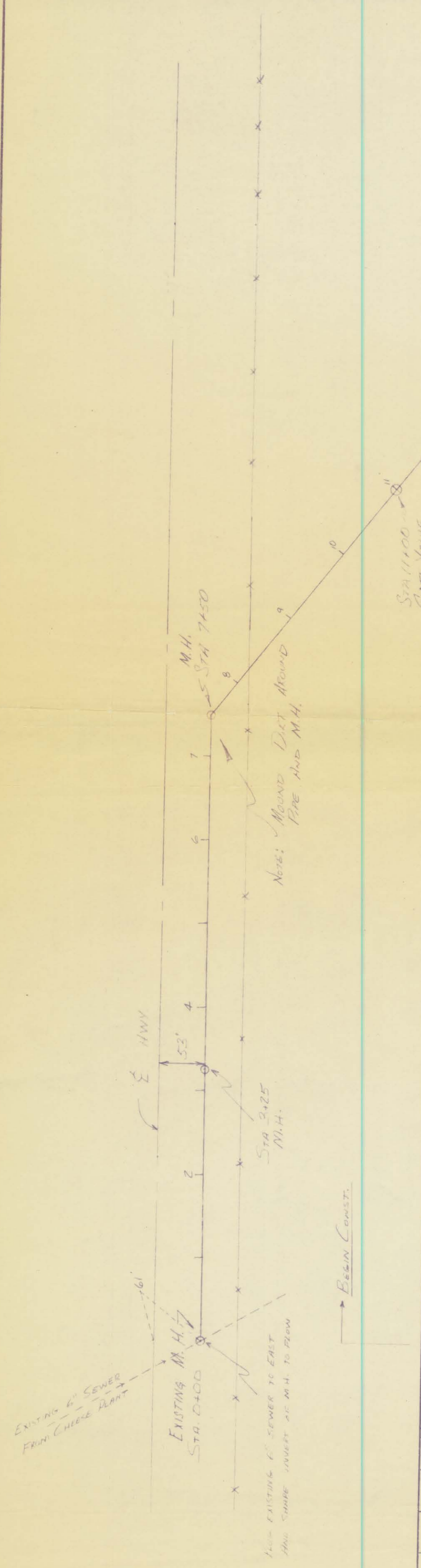
LAGOON

HOUSTON ENGINEERING FARGO, ND.

Date: 7-27-68
Approved By: GHH
Dwg. No.: 2 of 4

SURVEYED
 PLOTTED
 ALIGNED CHECKED
 NOTE BOOK
 RT. OF WAY CHECKED
 NO. _____
 DATE _____

SURVEYED
 PLOTTED
 GRADES CHECKED
 NOTE BOOK
 D. H. NOTED
 STRUCTURE NOTATIONS ON K.O.
 NO. _____
 DATE _____



MEDINA CHEESE PLANT
 SEWER MAIN PLAN AND PROFILE
 SCALE: 1" = 100' HORIZ.
 1" = 10' VERT.
 DRAWN 7-23-68
 DATE NO. 3 OF 4
 REVISED 8-17-68
 HERRICK ENGINEERING
 1400 N. W. 10th St.
 WILSON, N. D. 58050

