

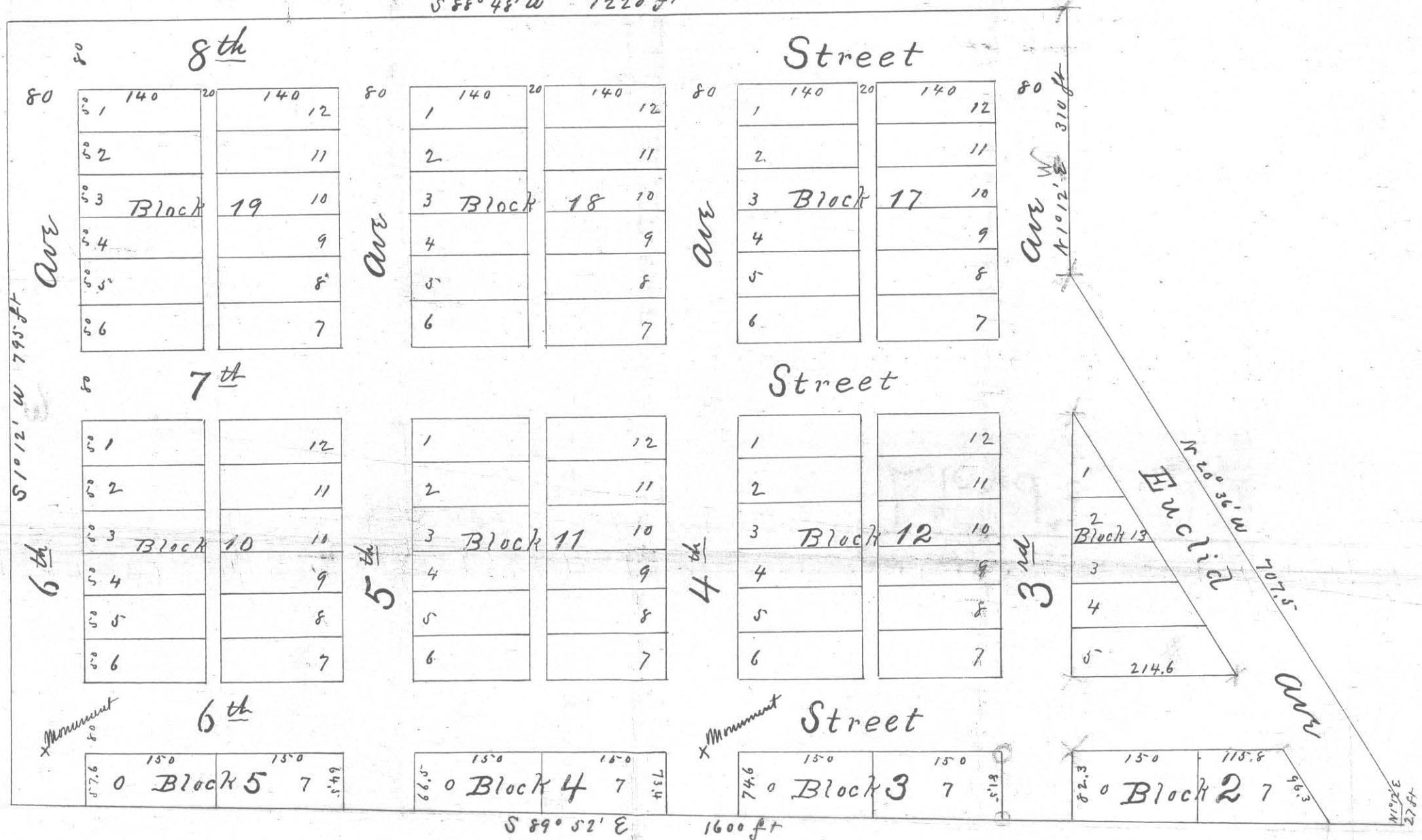
# Lloyd's Addition To

## Jamestown

### Dakota

Scale 150 ft to one inch.

S 88° 48' W 1220 ft



Lloyd's Addition to Jamestown D.T. is situated on the S 1/2 of the N W 1/4 of Section 25 Township 140 Range 64 and is more particularly located as follows. Beginning at the west side of 6th Ave of Jamestown on the north boundary thereof. Thence S 89° 52' east 1600 feet. Thence N 1° 12' E 27 feet. Thence N 20° 36' W 707.5 feet. Thence N 1° 12' E 310 feet. Thence S 88° 48' W 1220 feet. Thence S 1° 12' W 795 feet to place of beginning. The dimensions of all lots, the courses of all streets avenues & alleys & their widths are noted on the plat. At the time of making the survey which was made by the surveyor at the request of the proprietor thereof between the 29<sup>th</sup> <sup>Sept + the 2<sup>nd</sup> day of</sup> Oct. A.D. 1880 said surveyor caused to be planted at the intersection of South line of 6th street with the centre lines of 4th & 6th Avenues stones with X cut in their tops from which to make future surveys and has noted their position on the plat thus X with the word "Monument" placed contiguous thereto. And the said Surveyor Edward H Foster hereby certifies the accompanying plat was made by him from his notes of said survey and is true and accurate to the best of his belief and knowledge

Edward H Foster

Surveyor