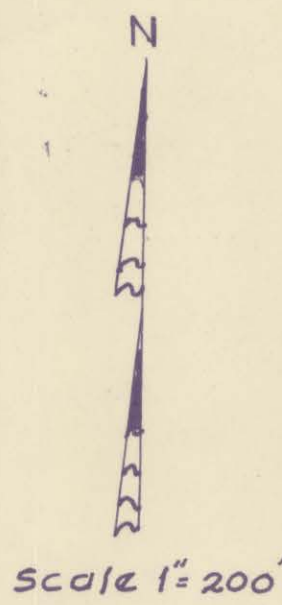


HI-VIEW SECOND ADDITION TO THE CITY OF JAMESTOWN, NORTH DAKOTA SOUTH ONE HALF of Sec. 23 TWP.140 Rge. 64



Sec. Line 2

1/4 Cor.

1824.7

1/4 SEC. LINE - CORPORATE LIMITS OF JAMESTOWN N.DAK

Easterly R/W of U.S. Hwy No. 281

R/W Line

STREET

N-89°31'W 1127.6

1048.3

60

200

200

200

200

200

200

200

200

200

200

200

200

200

200

200

200

200

200

200

200

200

200

200

200

200

200

200

200

200

200

200

200

200

200

200

200

200

200

200

200

200

200

200

200

200

200

200

200

200

200

200

200

200

200

200

200

200

200

200

200

200

200

200

200

200

200

200

200

200

200

200

200

200

200

200

200

200

200

200

200

200

200

200

200

200

200

200

200

200

200

200

200

200

200

200

200

200

200

200

200

200

portion in yellow is now First Northwest Addition, Lots 5, 6, 7 Block 2 Lot 5: 74-4836000 Lot 6: 74-4836500 Lot 7: 74-4837000 * All that remains is the E. 80.0' of Lots 2 & 4

Point of Beginning

HIGH-VIEW FIRST ADDITION

SOUTH LINE LOT 37

SE Cor SW 1/4 Sec 23

DEDICATION

Know all men by these presents that Henry Tehran and Violet Tehran, Husband and Wife, being the owners of that Tract of land situated in the South Half of Section 23, Twp. 140 N, Range 64 W of the 5th P.M., being in the County of Stutsman, State of North Dakota, and more particularly described as follows: Commencing at the S.E. corner of the S.W. 1/4 of said Section 23, Thence North along the quarter line 974.0 feet to the S.W. corner of Lot No. 3 of said Section 23, Thence East along the South Line of Lot 3 (S 89° 25' E) a distance of 100 feet to the Easterly Right of Way Line of U.S. Highway #281. Thence N 28° 33' W along said Easterly Right of Way Line 320.6 feet to the point of beginning of said Tract. Thence S 89° 31' E 926.7 feet: Thence North 360 feet: Thence N 89° 31' W 1127.6 feet to the Easterly Right of Way Line of said U.S. Highway #281: Thence S 28° 33' E 412.3 feet to the point of beginning. Said Tract containing 8.48 acres more or less. Be it known that said parties has caused the same to be surveyed and platted in the manner shown on this plat, and do hereby dedicate and donate to the public use forever the streets and access road as shown on this plat. In testimony whereof Henry Tehran and Violet Tehran, Husband and Wife, have caused this instrument to be executed this 21st day of March 19 64.

Henry Tehran Violet Tehran

STATE OF NORTH DAKOTA COUNTY OF STUTSMAN

On this 21st day of March 19 64, before me a Notary Public in and for said County and State, personally appeared Henry Tehran and Violet Tehran, Husband and Wife, to me well known to be the persons described in and that executed the foregoing instrument and acknowledged to me that they executed the same.

Notary Seal

Henry A. Jordin Notary Public, Stutsman County, N.Dak. My Commission expires June 3rd 1964

CERTIFICATE OF SURVEY

I, Jerome H. Spaeth, do hereby certify that I did survey the foregoing described property on October 19, 1963, and did make this plat of it as "Hi-View 2nd Addition" to the City of Jamestown, North Dakota, and have placed iron pins at the points as shown on this plat, thus e, and that distances are given in feet and decimals of feet, and that the same are correct to the best of my knowledge and belief.

Jerome H. Spaeth Registered Land Surveyor License No. 1031 N. Dak.

STATE OF NORTH DAKOTA COUNTY OF STUTSMAN

On this 21st day of March 19 64, before me a Notary Public, in and for said County and State, personally appeared Jerome H. Spaeth, to me well known to be the person described, and that executed the foregoing instrument and acknowledged to me that he executed the same.

Notary Seal

Henry A. Jordin Notary Public, Stutsman County, North Dakota My Commission expires June 3rd, 1964

CERTIFICATE OF APPROVAL

CITY OF JAMESTOWN STATE OF NORTH DAKOTA

By resolution duly passed by the City Planning Commission of Jamestown, North Dakota, on the 25th day of March 1964, the attached plat of Hi-View 2nd Addition to the City of Jamestown, North Dakota, located in the South Half of Section 23, Twp. 140N, Rge. 64W, was duly approved and accepted.

Dated: May 20, 1964

Attest: Ref. C. Briden City Auditor

P.J. Schirber President

CERTIFICATE OF APPROVAL

CITY OF JAMESTOWN STATE OF NORTH DAKOTA

By Resolution duly passed by the City Council of Jamestown, North Dakota, on the 21st day of April 1964, the attached plat of Hi-View 2nd Addition to the City of Jamestown, North Dakota, located in the South Half of Section 23, Twp. 140N, Rge. 64W, was duly approved and accepted and the plat ordered filed in the office of the Register of Deeds of Stutsman County, copy of same to be filed in the office of the City Auditor and City Engineer.

Dated: June 3, 1964

Attest: Ref. C. Briden City Auditor

Approved: Don Werman City Engineer

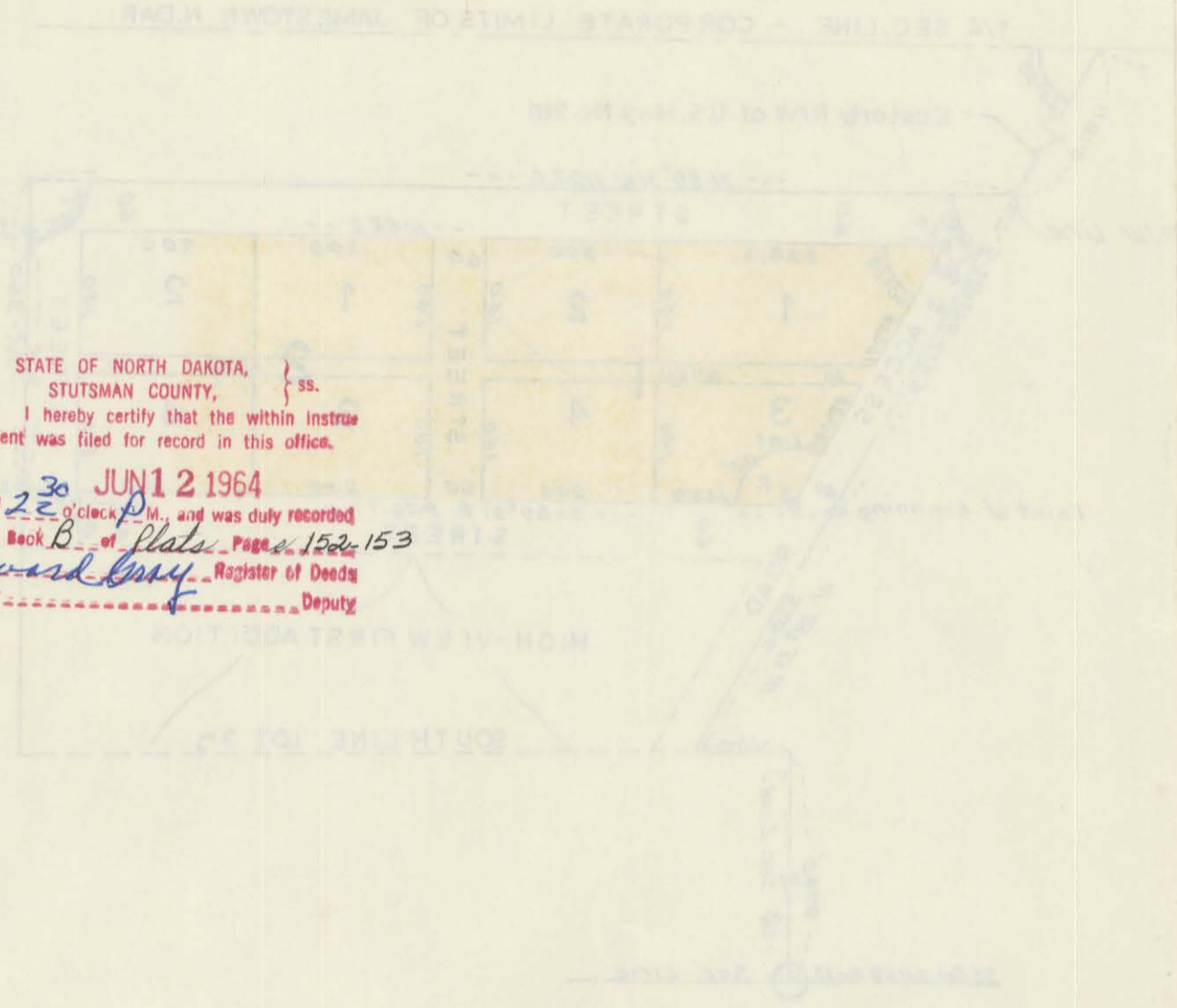
Wm Wether Mayor

See Vacation of all etc. E141 nka First Northwest add.

Hi-View Second Addition

HI-VIEW SECOND ADDITION
TO THE
CITY OF JAMESTOWN NORTH DAKOTA
SOUTH ONE HALF OF Sec. 23 T174N R6E B4

X 5495



STATE OF NORTH DAKOTA,
STUTSMAN COUNTY, } ss.
I hereby certify that the within instru-
ment was filed for record in this office.
JUN 12 1964
at 2:30 o'clock P.M. and was duly recorded
in Book 6 of State Pages 152, 153
Edward Long, Register of Deeds
Deputy

Auditor 30

[Faint, mostly illegible text from the reverse side of the document, including what appears to be a signature and some official stamps.]