

Selma Sewersan
110 ac.

Robert Samsen
145.00

Byron MITCHEL
197-600

BROWN'S

ADD

DAKOTA ST
HIGH ST
STRONG ST
PLEASANT ST

160.00

NE 7

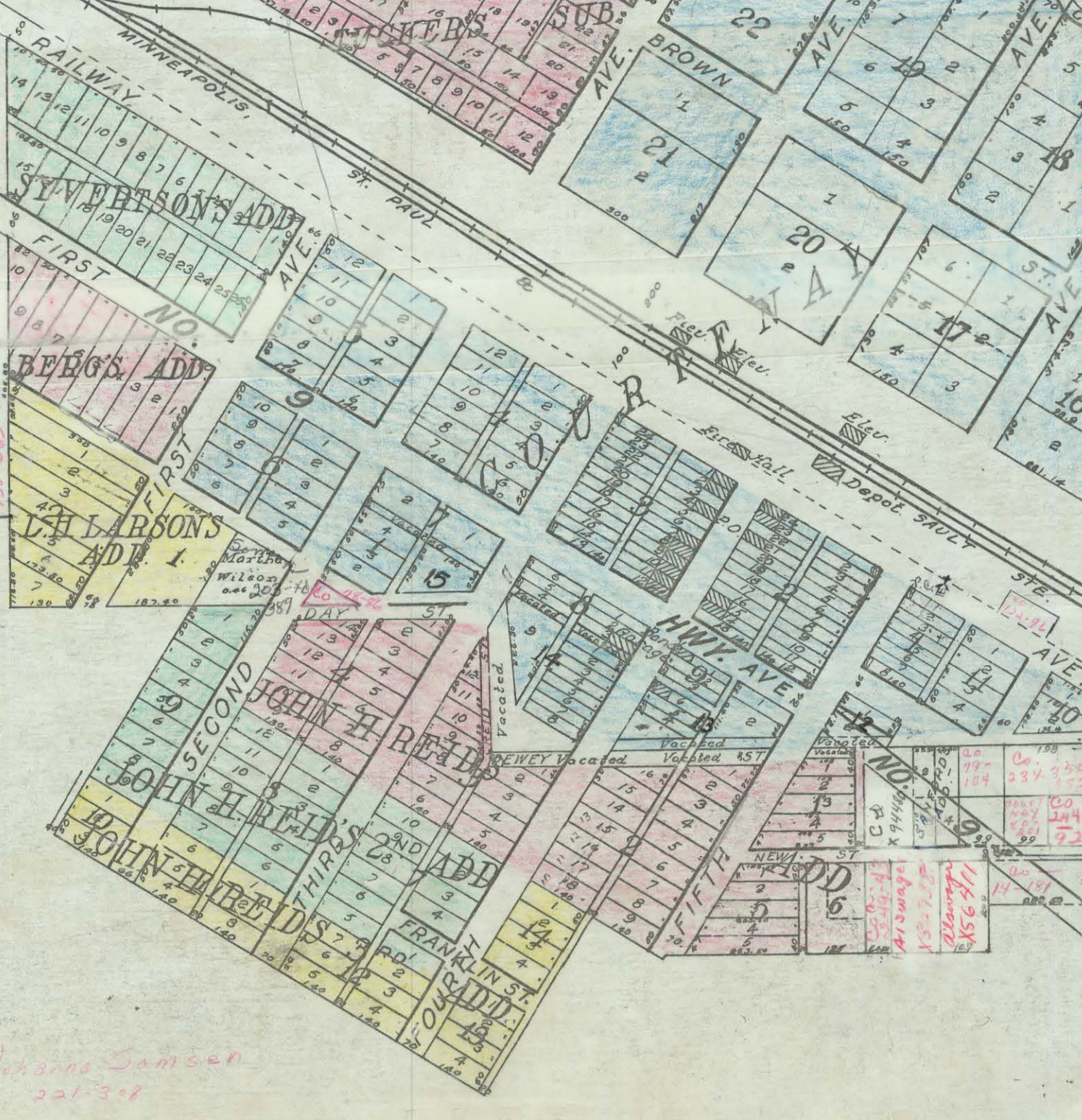
NW 8

SE 5

NE 4

- 2
- 3
- 4
- 5
- 6
- 7
- 8
- 9
- 10
- 11
- 12
- 13
- 14
- 15
- 16
- 17
- 18
- 19
- 20
- 21
- 22
- 23
- 24
- 25
- 26
- 27
- 28
- 29
- 30
- 31
- 32
- 33
- 34
- 35
- 36
- 37
- 38

HIGHWAY PARKWAY



Howland Chidley
143-552
143-557

ROBERT COFFEY
X122281
X55964
J. Nelson

CLINLEY
216-491

Howland Chidley
223-141

School
125-141
39412
266.2

Wm. A. Reid

286.22

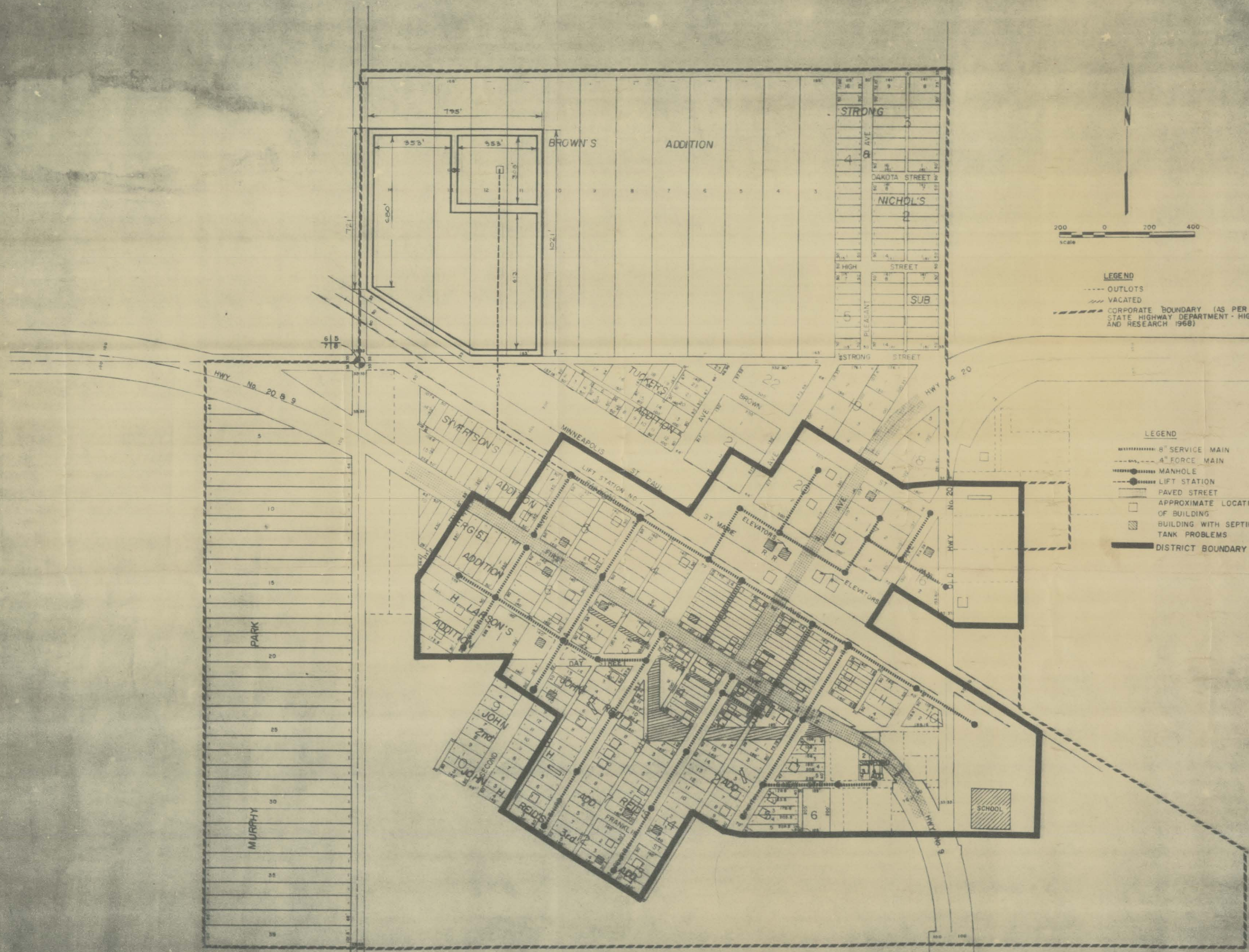
19.19

Johanna Samsen
221-308

49.26

Alley between Blks 8+14 Imverson 117-74

Plat of Courtenay



LEGEND
 --- OUTLOTS
 --- VACATED
 --- CORPORATE BOUNDARY (AS PER NORTH DAKOTA STATE HIGHWAY DEPARTMENT - HIGHWAY PLANNING AND RESEARCH 1968)

LEGEND
 --- 8" SERVICE MAIN
 --- 4" FORCE MAIN
 ● MANHOLE
 ● LIFT STATION
 --- PAVED STREET
 □ APPROXIMATE LOCATION OF BUILDING
 □ BUILDING WITH SEPTIC TANK PROBLEMS
 --- DISTRICT BOUNDARY

System No.	Date	By	Description

COURTENAY, NORTH DAKOTA

INTERSTATE ENGINEERING, INC.
 Engineering - Surviving - Planning

SHEET NO.