

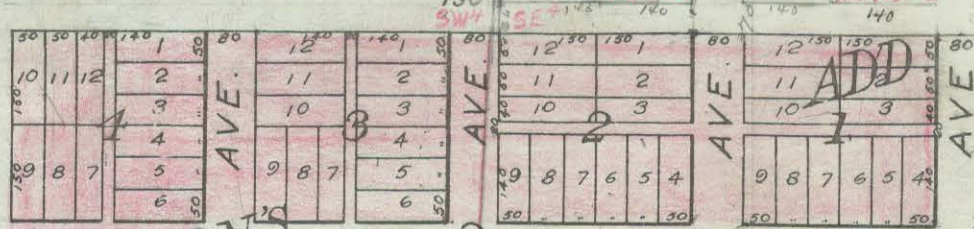
Harley Reich
X93902

Jacob
Reich
131-356

Neil
Chry

Church
X47823

Jacob
Reich
131-454
S²SW¹ Less Platted
Roads



Garry Kramlich
X121376

Garry Kramlich
X121455

CARY KERN X135184

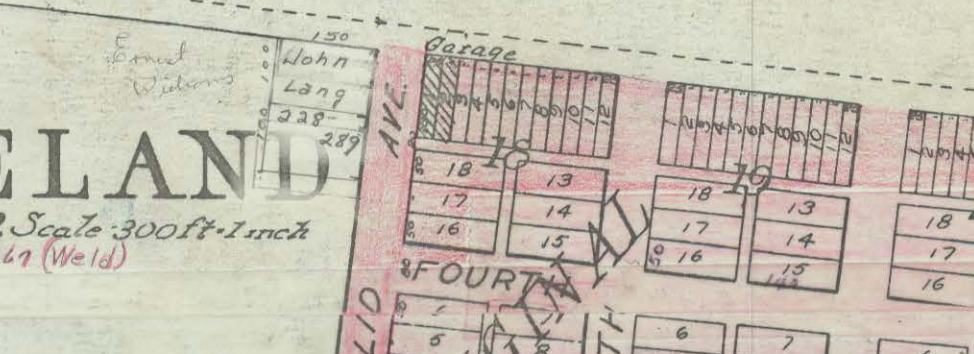
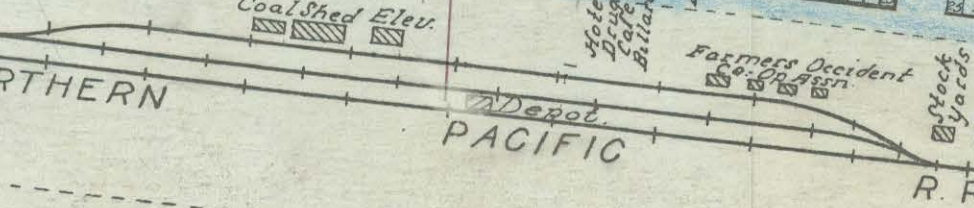
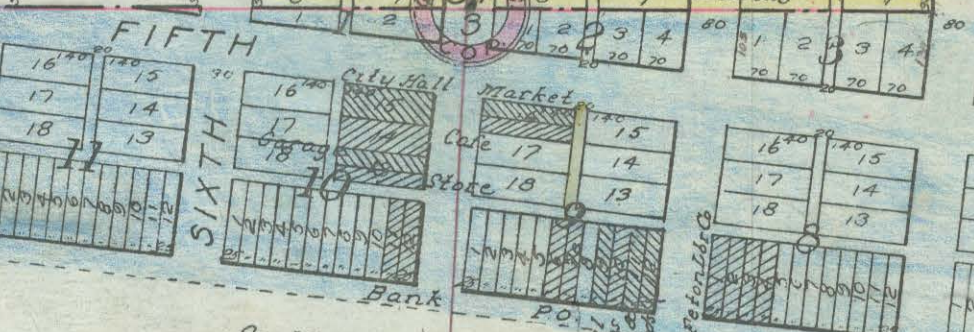
SHANE
X134523

Charles
Johnson X104877

Fred Grabinger
X51031

Teresa
Eylet
X169370

Cleveland 47-731



CLEVELAND
STIRTON TWP. Scale 300ft=1 inch
139.67 + 140.67 (Weld)

NORMAN ALDINGER
X18054

Marvin Strand
209-63

Cleveland
School
Dist.
171-155

X68991
 X169370
 X135184
 X104877
 X51031
 X169370
 X134523
 X47823
 X93902
 X18054
 X121376
 X121455
 X171-155

See Res. to vacate alley Doc. X169084 (3-14-05)

Blk 9 - L. ^(East side) 13-14-15 & ^(West side) 16, 17, 18 Original

Blk 24 - L. ^(East side) 10, 11, 12 & West side of L. 1 & 2

Blk. 5, L. 1, 2, 3, 4, 5, 6, on East side & L. 7-12 on West side Stearns Add.