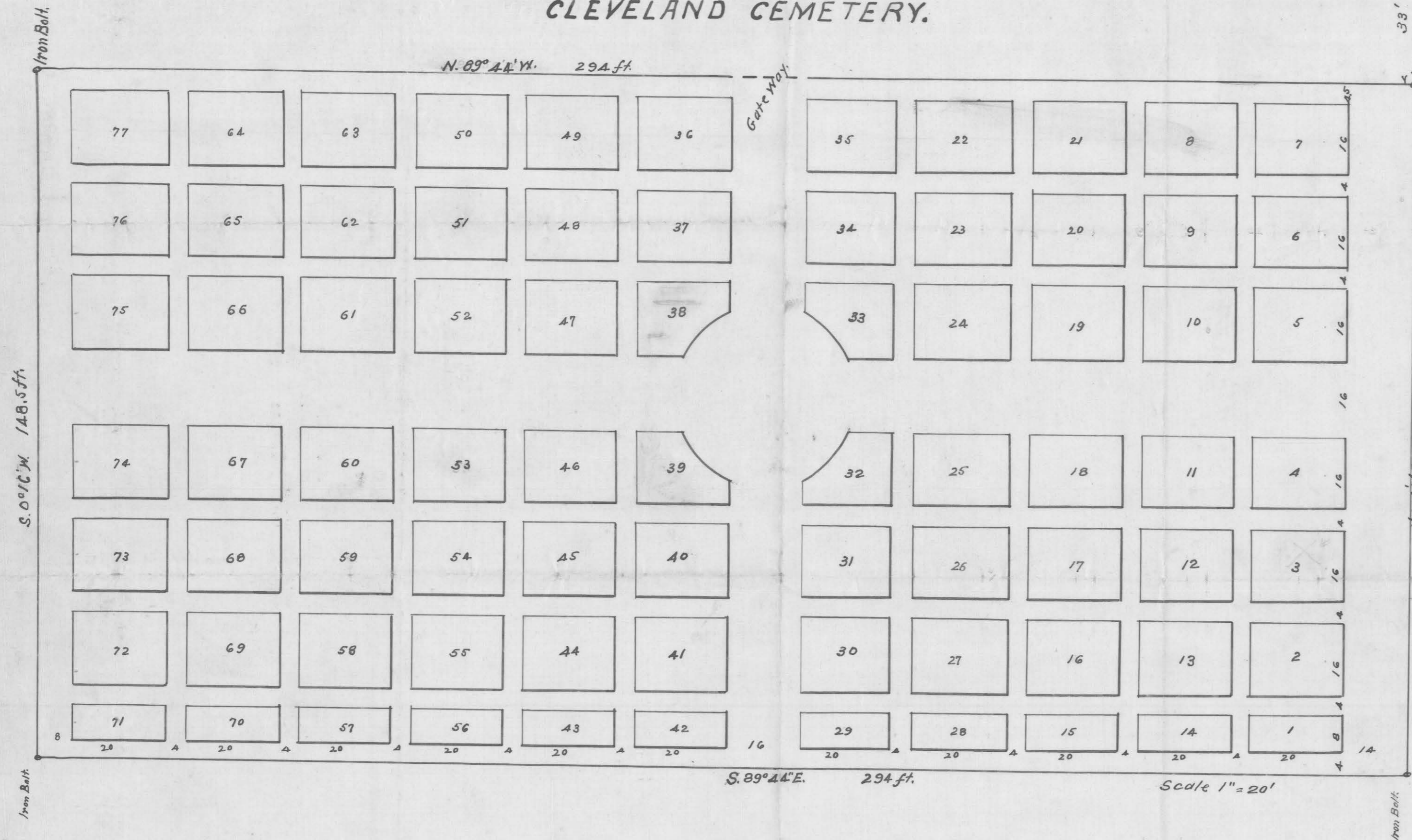


Section Line.
S. 89° 56' W.

CLEVELAND CEMETERY.



NE Corner
Sec 4
139.6'

Know all men by these Presents - That The West Memorial Congregational Church Association of Cleveland MO. being the owner and proprietor of a Part of Land situated in Government Lot No. 1. Sec. 4 Twp. 139 N. R. 67 W. in Stateman County MO. - more particularly described as follows. Beginning at a point 33 feet South and 33 feet S. 89° 56' W. from the N.E. Corner of Sec. 4 aforesaid, Thence running N. 89° 44' W. a distance of 294 feet. Thence running S. 0° 16' W. a distance of 148.5 feet. Thence running S. 89° 44' E. a distance of 294 feet. Thence running N. 0° 15' E. a distance of 148.5 feet to the place of beginning and containing one acre of land more or less, - has caused the same to be surveyed and platted as "Cleveland Cemetery" - and hereby Donates and Dedicates to the Public use forever all the Avenues and Alleys as shown on the Annexed Map, subject however to such rules and regulations as the said Association may make and prescribe for the proper care and protection of the same.

In witness whereof the said Association has caused these Presents to be signed by its President and Attested by its Secretary.

Attest Emma S. Colton Secretary.
Charles Colton President
The West Memorial Congregational Church Association

State of North Dakota }
County of Stanton } ss
On this 22nd day of January A.D. 1913. Personally appeared before me - a Notary Public in and for Stanton Co. ND. Charles Colton known to me to be the person who signed the above instrument, and he acknowledged to me that he so signed as the President of the West Memorial Congregational Church Association, as being the free and voluntary act of said Association.

J. H. Jennings
Notary Public

State of North Dakota }
County of Stanton } ss
On this 22nd day of October A.D. 1907. Personally appeared before me, B. P. Pilsen, known to me to be the person who made the Certificate hereto annexed, and he did then acknowledge to me that he executed the same as his voluntary act.
A. Parkinson
Deputy County Auditor

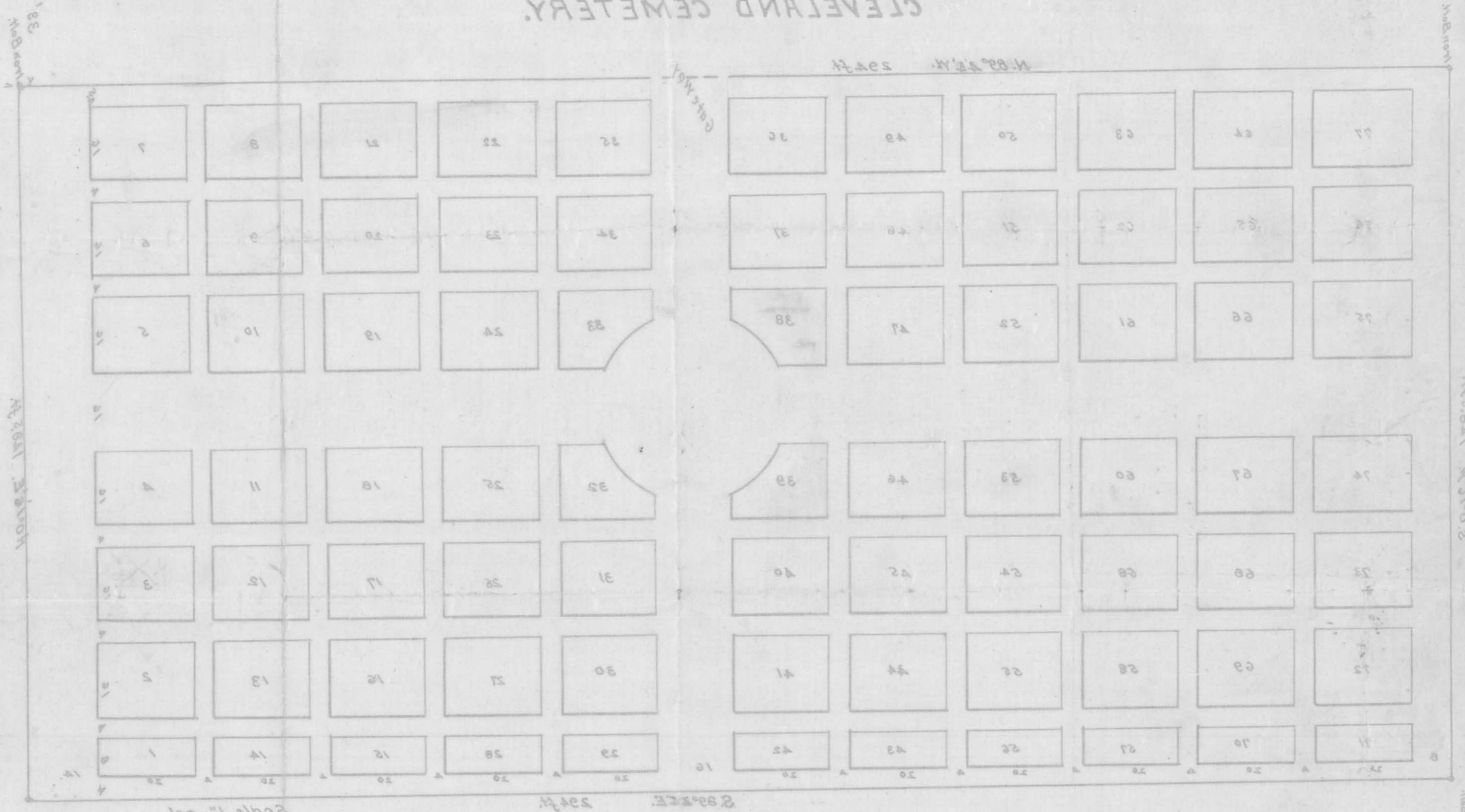
I - B. P. Pilsen hereby certify that I have accurately surveyed and platted Cleveland Cemetery as shown on the annexed map - all measurements are given in feet and decimals of feet, and all courses are true courses. Iron bolts have been driven at each corner as shown.
B. P. Pilsen
Surveyor.

DOCUMENT NUMBER 60371

There are over 1000 graves - that the first Memorial Congressional Cemetery Association of Cleveland, Ohio, being the owner and proprietor of a part of land situated in Government lot No. 1, Sec. 2, Twp. 13 N., R. 17 W., in Cuyahoga County, Ohio - was particularly directed as follows: Beginning at a point 33 feet south and 33 feet 2.89° 26' N. from the N.E. corner of Sec. 4, aforesaid, there running N 89° 44' W. a distance of 294 feet. Then running S 0° 16' W. a distance of 148 feet. Then running S 89° 44' E. a distance of 294 feet. Then running N 0° 16' E. a distance of 148 feet. It is the duty of the Association to keep the same in good order and to erect and maintain the same.

Charleston, West Virginia
July 7, 1891
M. J. ...
I hereby certify that the within and recorded plat is a true and correct copy of the original as the same appears on file in the office of the Recorder of Deeds for the County of Cuyahoga, Ohio, and that the same has been duly recorded in the office of the Recorder of Deeds for the County of Cuyahoga, Ohio, on the 7th day of July, 1891.

And will be ...
I, the undersigned, Clerk of the Board of Health, do hereby certify that the within and recorded plat is a true and correct copy of the original as the same appears on file in the office of the Recorder of Deeds for the County of Cuyahoga, Ohio, and that the same has been duly recorded in the office of the Recorder of Deeds for the County of Cuyahoga, Ohio, on the 7th day of July, 1891.



I - B. A. ...
I, the undersigned, Clerk of the Board of Health, do hereby certify that the within and recorded plat is a true and correct copy of the original as the same appears on file in the office of the Recorder of Deeds for the County of Cuyahoga, Ohio, and that the same has been duly recorded in the office of the Recorder of Deeds for the County of Cuyahoga, Ohio, on the 7th day of July, 1891.

State of Ohio, County of Cuyahoga
I, the undersigned, Clerk of the Board of Health, do hereby certify that the within and recorded plat is a true and correct copy of the original as the same appears on file in the office of the Recorder of Deeds for the County of Cuyahoga, Ohio, and that the same has been duly recorded in the office of the Recorder of Deeds for the County of Cuyahoga, Ohio, on the 7th day of July, 1891.

Section Line
2.89° 26' N.

CLEVELAND CEMETERY.