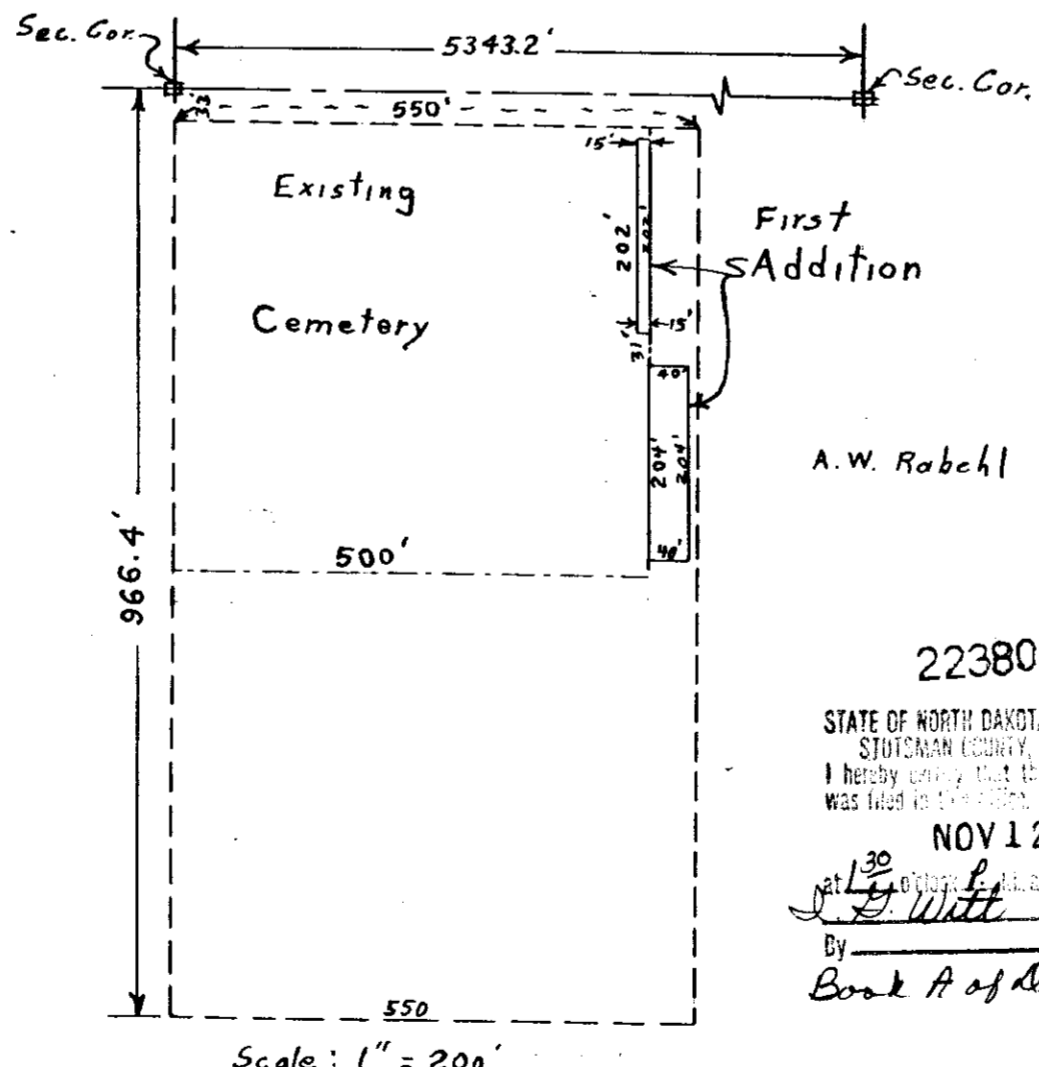


FIRST ADDITION
 TO
 CALVARY CEMETERY
 JAMESTOWN, NO. DAK.
 IN
 NW 1/4 OF SEC 2
 T 139 N, R 64 W
 SCALE: 1" = 30'



223804
 STATE OF NORTH DAKOTA }
 STOTSMAN COUNTY } SS.
 I hereby certify that the within instrument
 was filed in 1954.
 NOV 12 - 1954
 at 1:30 o'clock P.M. and was duly recorded
 By L. G. Witt Register of Deeds
 Deputy
 Book A of Deeds Page 286-287

Scale: 1" = 200'