



Notes:

1. All water and sanitary service line locations shown on the plan sheets are approximate and the Contractor to field verify and locate.
2. New watermain (if bored or open cut) shall be installed 6' maximum from old watermain, and a minimum 10' from sanitary main.

X Symbol used to show ID of Manholes, Curb Inlets, and Water Gate Valves, and Water Inlet Valves. See Manhole and Curb Inlet Sheets, and Water Gate Valve Sheet for additional information.

See Detail Page D6
 Install 12 LF of 6" PVC Watermain.
 Connect to Existing Watermain (2 ea.)
 Install (1) 24" x 24" Manhole / Saddle.
 Install (1) 1.25' Curb Stop
 w/ Water Valve Stack Cover.
 Install 12 LF of 1.25' HDPE Bypass
 **Valve Stack Cover, HDPE and Glued Fittings shall be included in the cost for 1.25' Curb Stop.

Remove Existing Gate Valve

INTERSTATE ENGINEERING PROFESSIONALS you need, people you trust. 1903 12th Avenue SW Jamestown, ND 58402-2035 P.O. Box 2035 Interstate Engineering, Inc. www.interstateeng.com Fax (701) 252-0203 Ph (701) 252-0234	REGISTERED PROFESSIONAL ENGINEER NORTH DAKOTA BENJAMIN B. AAASETH PE-10085 DATE 6/6/2023	C2 Sheet Number	2023 Watermain Replacement Project City of Jamestown Jamestown, North Dakota DWSRF 4706496.14 Plan Layout - Segment "A" Drawn By: PS Checked By: NC/BA Date: 01/19/2023 Project No.: EC220118
--	---	---------------------------	---



Rev	Date	By	Description

2023 Watermain Replacement Project
 DWSRF 4706496-14
 City of Jamestown
 Jamestown, North Dakota

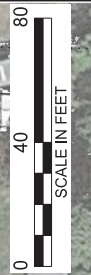
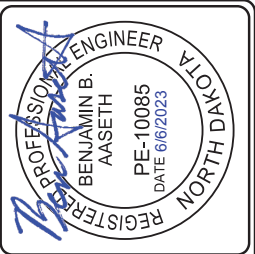
Plan Layout - Segment "B"

Drawn By: PS
 Checked By: NC/BA
 Project No.: EC220118
 Date: 01/19/2023

Interstate Engineering, Inc.
 1903 12th Avenue SW
 Jamestown, ND 58402-2035
 P.O. Box 2035
 Fax (701) 282-0203
 www.interstateeng.com

Professionals you need, people you trust.

3
 Sheet Number

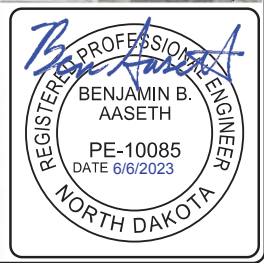
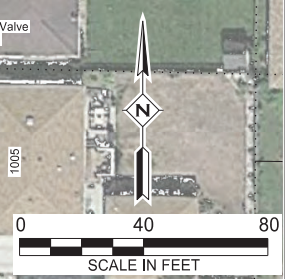
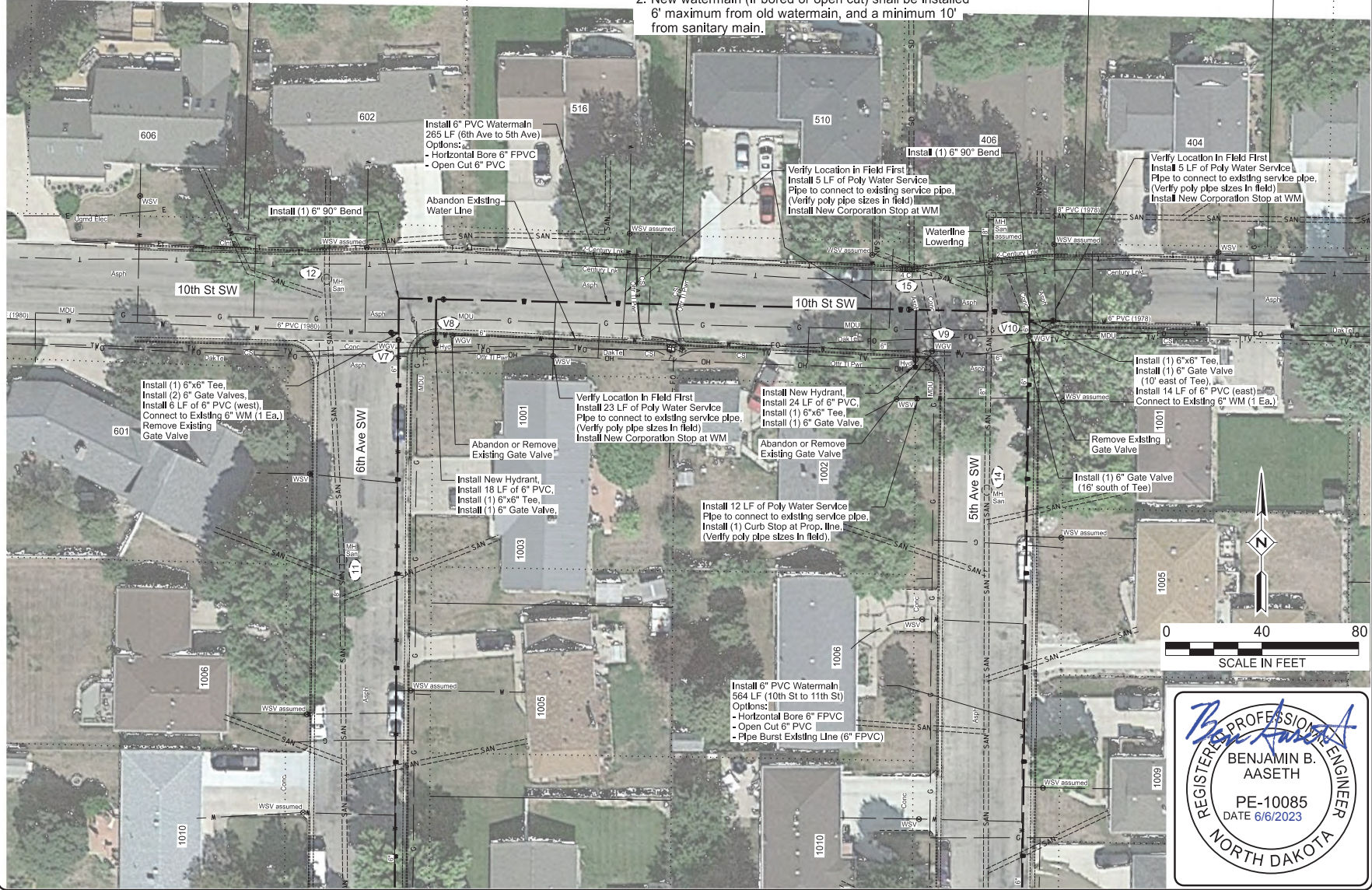


- Notes:
- All water and sanitary service line locations shown on the plan sheets are approximate and the Contractor to field verify, and locate.
 - New watermain (if bored or open cut) shall be installed 6' maximum from old watermain, and a minimum 10' from sanitary main.

Symbol used to show ID of Manholes, Curb Inlets, and Water Gate Valves. See Manhole and Curb Inlet Sheets, and Water Gate Valve Sheet for additional information.

(X) Symbol used to show ID of Manholes, Curb Inlets, and Water Gate Valves. See Manhole and Curb Inlet Sheets, and Water Gate Valve Sheet for additional information.

- Notes:
1. All water and sanitary service line locations shown on the plan sheets are approximate and the Contractor to field verify and locate.
 2. New watermain (if bored or open cut) shall be installed 6' maximum from old watermain, and a minimum 10' from sanitary main.



No.	Date	By	Description

2023 Water Main and Sanitary Main Project
 City of Jamestown
 Jamestown, North Dakota
 Project No.: EC2203116
 Date: 01/11/2023
 Plan Layout - Segment "D"
 Drawn By: PS
 Checked By: NCL/BA
 Surveyed By: PJ
 Designed By: BA
 Project No.: EC2203116
 Date: 01/11/2023

Interstate Engineering, Inc.
 P.O. Box 2035
 1903 28th Avenue SW
 Jamestown, ND 58505
 Ph: (701) 252-0234
 Fax: (701) 252-0233
 www.interstate-engineering.com
 © 2023 Interstate Engineering, Inc. All Rights Reserved. See Also: 02/2023



C4
 Sheet Number



Notes:
 1. All water and sanitary service line locations shown on the plan sheets are approximate and the Contractor to field verify and locate.
 2. New watermain (if bored or open cut) shall be installed 6' maximum from old watermain, and a minimum 10' from sanitary main.

X Symbol used to show ID of Manholes, Curb Inlets, and Water Gate Valves. See Manhole and Curb Inlet Sheets, and Water Gate Valve Sheet for additional information.

X





Notes:
 1. All water and sanitary service line locations shown on the plan sheets are approximate and the Contractor to field verify and locate.
 2. New watermain (if bored or open cut) shall be installed 6' maximum from old watermain, and a minimum 10' from sanitary main.

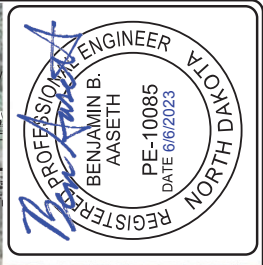
X Symbol used to show ID of Manholes, Curb Inlets, and Water Gate Valves. See Manhole and Curb Inlet Sheets, and Water Gate Valve Sheet for additional information.

No	Date	By	Description

2023 Wardsville Restaurant Project DWSRF 4700495-14 City of Jamestown Jamestown, North Dakota	Checked By: PS Designed By: BA Drawn By: BA Date: 01/19/2023
--	---

Interstate Engineering, Inc.
 1903 12th Avenue SW
 Jamestown, ND 58402-2035
 P.O. Box 2035
 Fax (701) 282-2023
 Phone (701) 282-2034
 www.interstateeng.com

C6
 Sheet Number



12/21/21 BP
 6/20/2023
 BAA:AAH
 C:\2023\06\23\2023_06_23_10_11_12_25_Bend\10th St SW\10th St SW - 11.25' Bend.dwg



X Symbol used to show ID of Manholes, Curb Inlets, and Water Gate Valves. See Manhole and Curb Inlet Sheets, and Water Gate Valve Sheet for additional information.

Notes:
 1. All water and sanitary service line locations shown on the plan sheets are approximate and the Contractor to field verify and locate.
 2. New watermain (if bored or open cut) shall be installed 6' maximum from old watermain, and a minimum 10' from sanitary main.

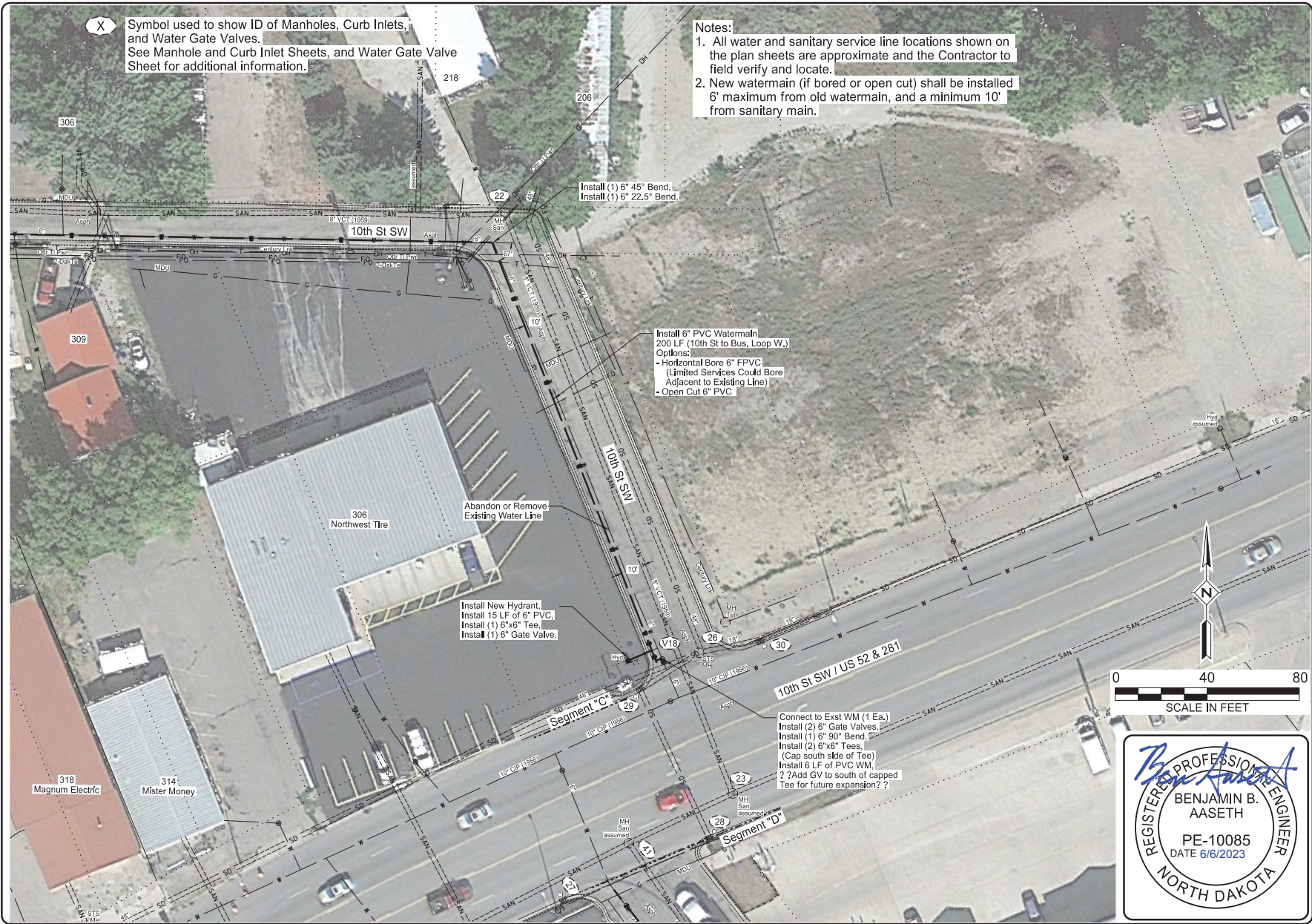
No.	Date	By	Description

2023 Water Main Replacement Project			
City of Jamestown Jamestown, North Dakota			
Plan Layout - Segment "C"			
Drawn By:	PS	Reviewed By:	PJ
Checked By:	NCI/BA	Designed By:	BA
Project No.:	EC220116	Date:	01/19/2023

Interstate Engineering, Inc.
 P.O. Box 2035
 1903 12th Avenue SW
 Jamestown, ND 58405
 Ph: (701) 252-0234
 Fax: (701) 252-0203
 www.interstate-engineering.com
© 2023 Interstate Engineering, Inc. All Rights Reserved. E-mail: sales@interstate-engineering.com



C7
 Sheet Number



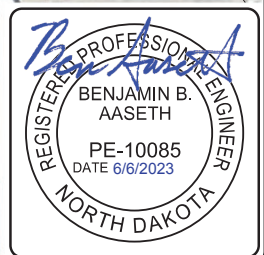
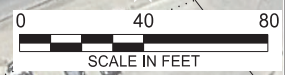
X Symbol used to show ID of Manholes, Curb Inlets, and Water Gate Valves. See Manhole and Curb Inlet Sheets, and Water Gate Valve Sheet for additional information.

- Notes:
1. All water and sanitary service line locations shown on the plan sheets are approximate and the Contractor to field verify and locate.
 2. New watermain (if bored or open cut) shall be installed 6' maximum from old watermain, and a minimum 10' from sanitary main.

Install 6" PVC Watermain
200 LF (10th St to Bus. Loop W.)
Options:
- Horizontal Bore 6" FPVC
(Limited Services Could Bore
Adjacent to Existing Line)
- Open Cut 6" PVC

Install New Hydrant.
Install 15 LF of 6" PVC.
Install (1) 6"x6" Tee.
Install (1) 6" Gate Valve.

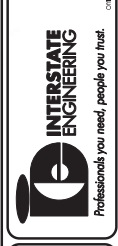
Connect to Exst WM (1 Ea.)
Install (2) 6" Gate Valves.
Install (1) 6" 90° Bend.
Install (2) 6"x6" Tees.
(Cap south side of Tee)
Install 6 LF of PVC WM.
? Add GV to south of capped
Tee for future expansion? ?



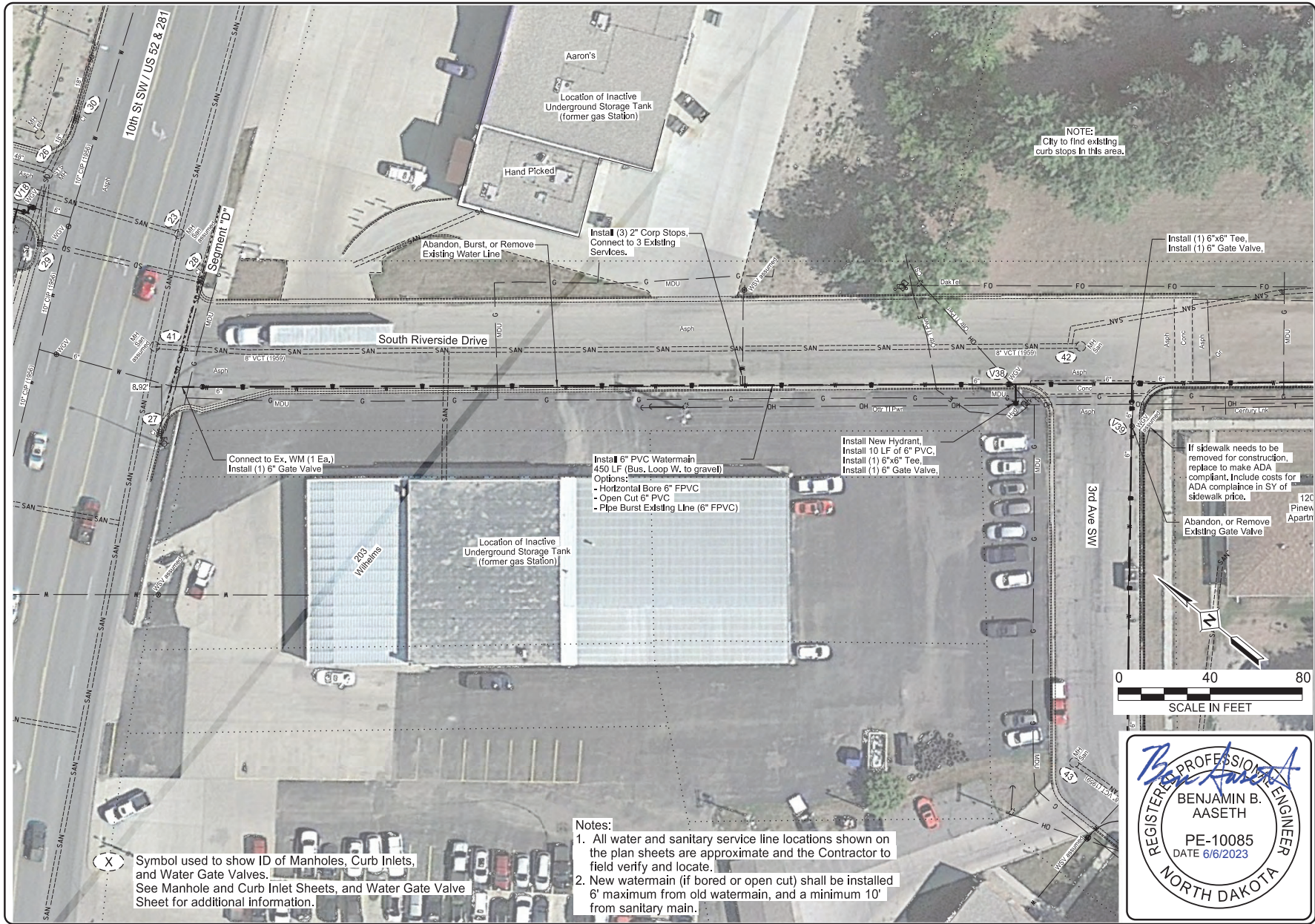
No.	Date	By	Description

2023 Water Main Replacement Project City of Jamestown Jamestown, North Dakota	
Project No. EC220116	Date: 01/19/2023
Plan Layout - Segment "C"	
Drawn By: PS	Checked By: NCL/BA
Surveyed By: PJ	Designed By: BA

Interstate Engineering, Inc.
P.O. Box 2035
1903 28th Avenue SW
Jamestown, ND 58505
Ph: (701) 252-0234
Fax: (701) 252-0203
www.interstateeng.com
Office in North Dakota, Minnesota, and Wisconsin



C8
Sheet Number



(X) Symbol used to show ID of Manholes, Curb Inlets, and Water Gate Valves. See Manhole and Curb Inlet Sheets, and Water Gate Valve Sheet for additional information.

- Notes:
1. All water and sanitary service line locations shown on the plan sheets are approximate and the Contractor to field verify and locate.
 2. New watermain (if bored or open cut) shall be installed 6' maximum from old watermain, and a minimum 10' from sanitary main.

NOTE:
City to find existing curb stops in this area.

No.	Date	By	Description

2023 Water Main Replacement Project
City of Jamestown
Jamestown, North Dakota

Plan Layout - Segment "D"

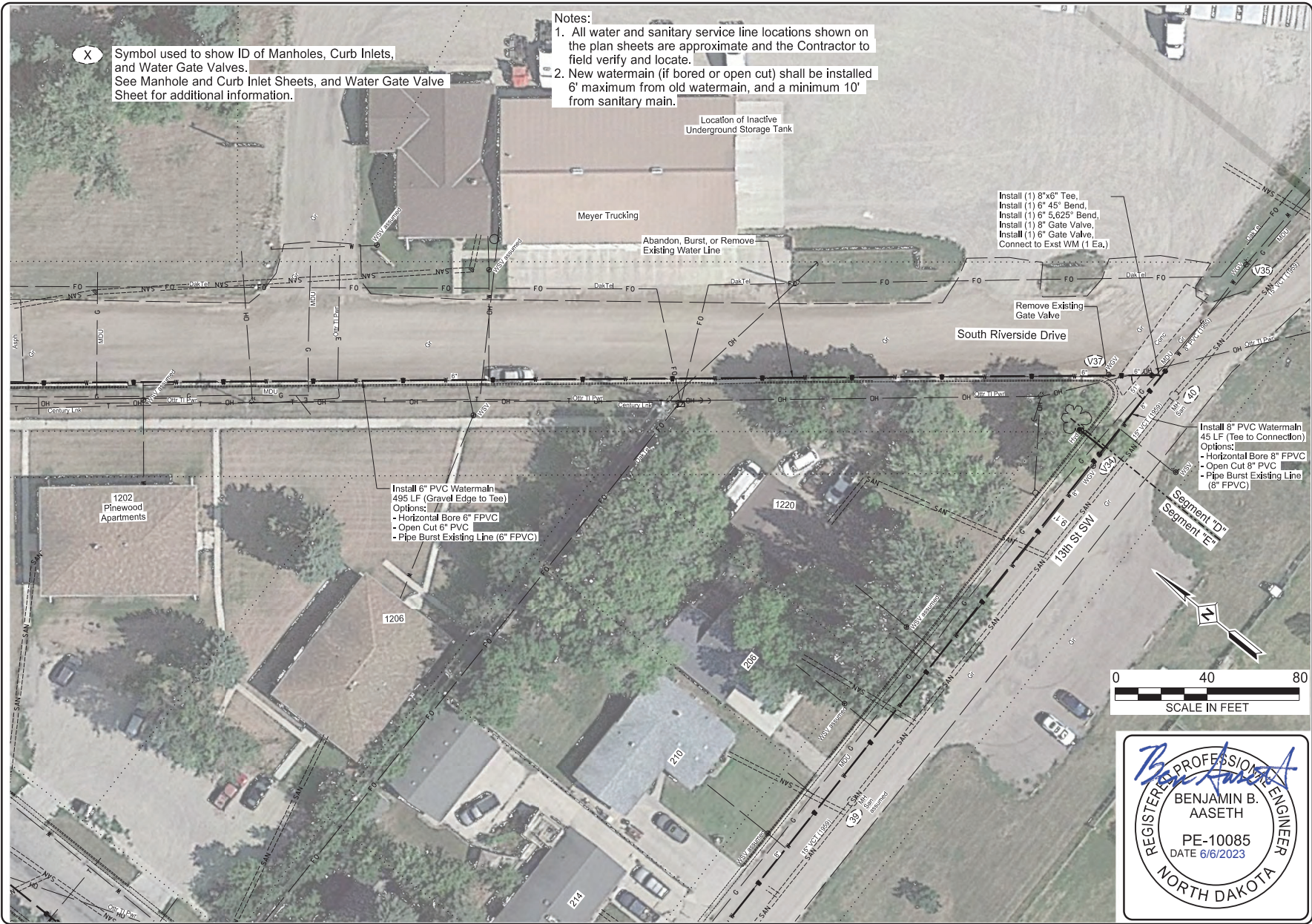
Drawn By:	PS	Reviewed By:	PJ	Project No.:	EC220116
Checked By:	NCJ/BA	Designed By:	BA	Date:	01/19/2023

Interstate Engineering, Inc.
P.O. Box 2035
Jamestown, ND 58505
Ph: (701) 252-0234
Fax: (701) 252-0203
www.interstateeng.com



C9

Sheet Number



- Notes:
1. All water and sanitary service line locations shown on the plan sheets are approximate and the Contractor to field verify and locate.
 2. New watermain (if bored or open cut) shall be installed 6' maximum from old watermain, and a minimum 10' from sanitary main.

X Symbol used to show ID of Manholes, Curb Inlets, and Water Gate Valves. See Manhole and Curb Inlet Sheets, and Water Gate Valve Sheet for additional information.

Location of Inactive Underground Storage Tank

Install (1) 8"x6" Tee,
Install (1) 6" 45° Bend,
Install (1) 6" 5,625' Bend,
Install (1) 8" Gate Valve,
Install (1) 6" Gate Valve,
Connect to Exst WM (1 Ea.)

Remove Existing Gate Valve

Install 8" PVC Watermain
495 LF (Gravel Edge to Tee)
Options:
- Horizontal Bore 8" FPVC
- Open Cut 6" PVC
- Pipe Burst Existing Line (6" FPVC)

Install 8" PVC Watermain
45 LF (Tee to Connection)
Options:
- Horizontal Bore 8" FPVC
- Open Cut 8" PVC
- Pipe Burst Existing Line (8" FPVC)



Ben Aaseth
REGISTERED PROFESSIONAL ENGINEER
BENJAMIN B. AASETH
PE-10085
DATE 6/6/2023
NORTH DAKOTA

No.	Date	By	Description

2023 Water Main Replacement Project
City of Jamestown
Jamestown, North Dakota

Plan Layout - Segment "D"

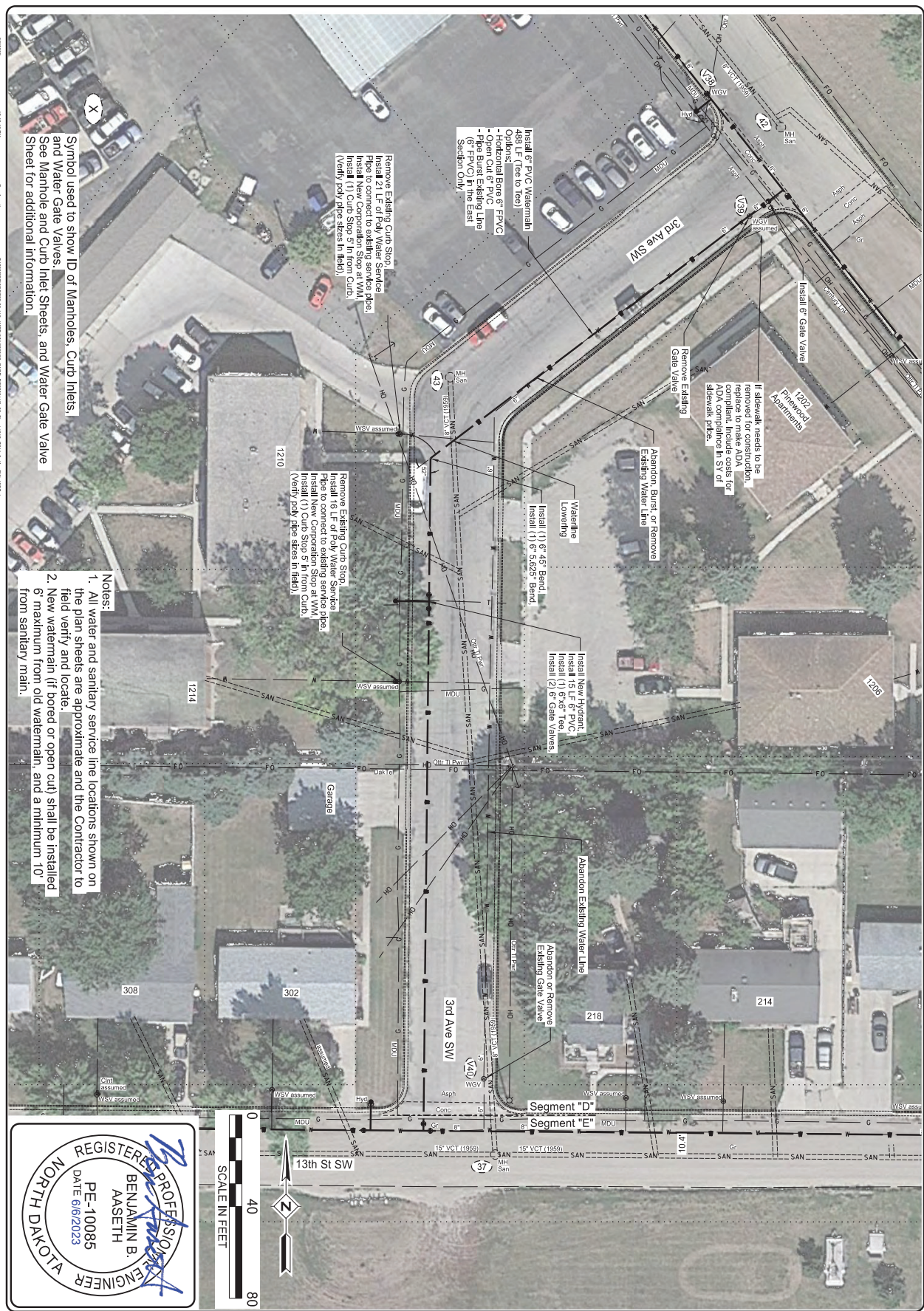
Drawn By:	PS	Reviewed By:	PJ	Project No.:	EC220116
Checked By:	NCI/BA	Designed By:	BA	Date:	01/19/2023

Interstate Engineering, Inc.
P.O. Box 2035
1903 12th Avenue SW
Jamestown, ND 58505
Ph (701) 252-0234
Fax (701) 252-0203
www.interstateeng.com
© 2003-2023 Interstate Engineering, Inc. All Rights Reserved

INTERSTATE ENGINEERING
Professionals you need, people you trust.

C10

Sheet Number



Symbol used to show ID of Manholes, Curb Inlets, and Water Gate Valves. See Manhole and Curb Inlet Sheets, and Water Gate Valve Sheet for additional information.

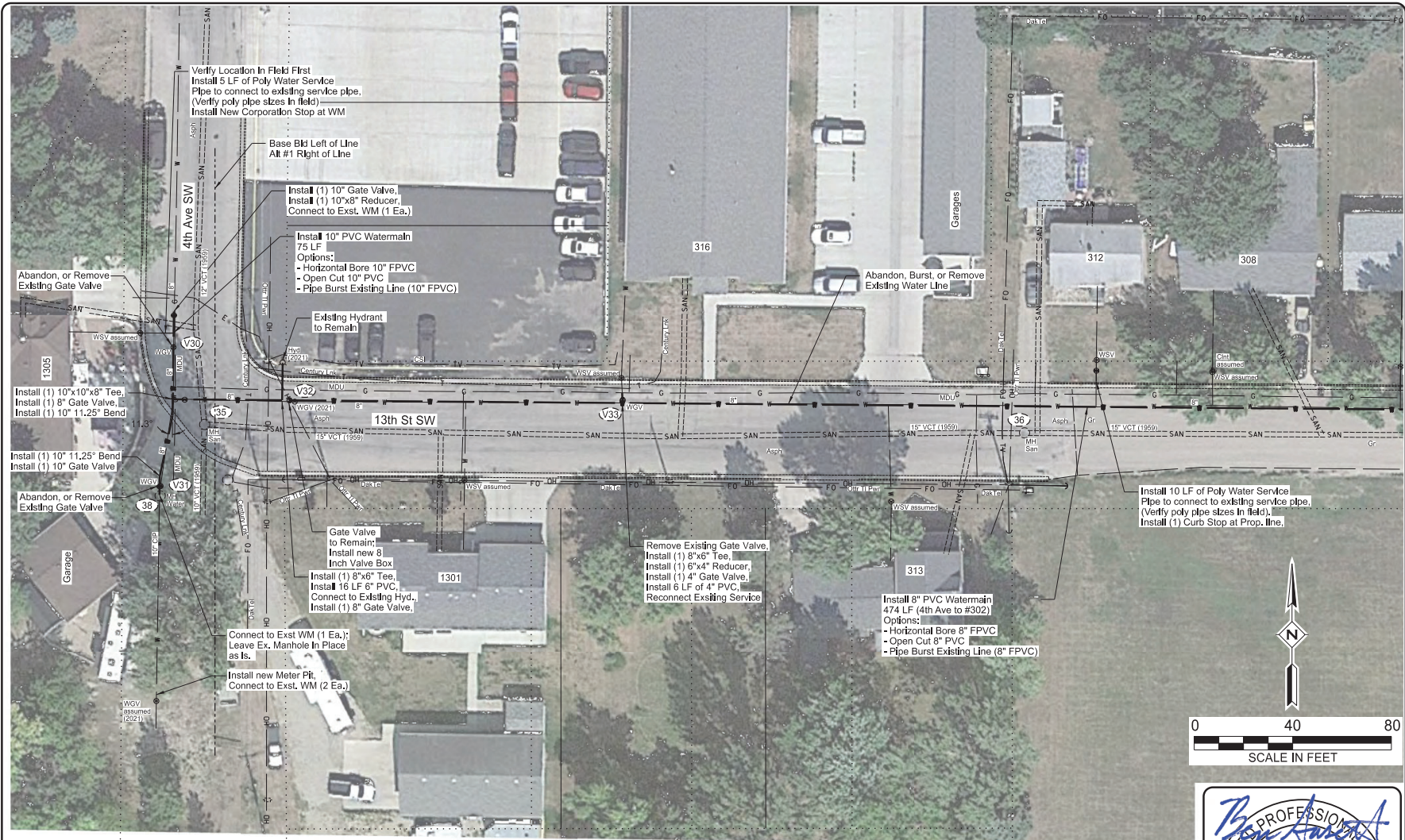
- Notes:
1. All water and sanitary service line locations shown on the plan sheets are approximate and the Contractor on field verify and locate.
 2. New watermain (if bored or open cut) shall be installed 6' maximum from old watermain, and a minimum 10' from sanitary main.

6/23/2023 12:56:48 PM B:\M\10085\10085.dwg EC2200116.dwg 10/19/2023 10:58:00 AM

REGISTERED PROFESSIONAL ENGINEER
 NORTH DAKOTA
 BENJAMIN B. AASETH
 PE-10085
 DATE 6/6/2023



<div style="display: flex; align-items: center;"> <div> <p>INTERSTATE ENGINEERING</p> <p style="font-size: 8px;">Professionals you need, people you trust.</p> </div> </div>	Interstate Engineering, Inc. P.O. Box 2035 1903 12th Avenue SW Jamestown, ND 58402-2035 Ph (701) 252-0234 Fax (701) 252-0203 www.interstateeng.com	2023 Watermain Replacement Project DIVSRF 470454-14 City of Jamestown Jamestown, North Dakota P200116 Plan Layout - Segment "D" Drawn By: PS Surveyed By: PJ Project No: EC2200116 Checked By: NG/BA Designed By: BA Date: 01/19/2023	<table border="1" style="width: 100%; border-collapse: collapse;"> <thead> <tr> <th style="width: 5%;">Rev No</th> <th style="width: 10%;">Date</th> <th style="width: 5%;">By</th> <th style="width: 80%;">Description</th> </tr> </thead> <tbody> <tr><td> </td><td> </td><td> </td><td> </td></tr> <tr><td> </td><td> </td><td> </td><td> </td></tr> <tr><td> </td><td> </td><td> </td><td> </td></tr> <tr><td> </td><td> </td><td> </td><td> </td></tr> </tbody> </table>	Rev No	Date	By	Description																
	Rev No	Date	By	Description																			
C11	Sheet Number																						



(X) Symbol used to show ID of Manholes, Curb Inlets, and Water Gate Valves.
See Manhole and Curb Inlet Sheets, and Water Gate Valve Sheet for additional information.

- Notes:
1. All water and sanitary service line locations shown on the plan sheets are approximate and the Contractor to field verify and locate.
 2. New watermain (if bored or open cut) shall be installed 6' maximum from old watermain, and a minimum 10' from sanitary main.

No.	Date	By	Description

2023 Water Main and Sanitary Main Project
City of Jamestown
Jamestown, North Dakota
Project No. EC220318
Drawn By: PS
Checked By: NCL/BA
Saved By: PJ
Designed By: BA
Date: 01/19/2023

Interstate Engineering, Inc.
P.O. Box 2035
Jamestown, ND 58505
Ph: (701) 252-0234
Fax: (701) 252-0233
www.interstate-engineering.com
Office: 8 North 20th Street, Suite 200, Jamestown, ND 58505



C12

Sheet Number



Install New Hydrant,
Install 14 LF of 8" PVC,
Install (1) 8"x6" Tee,
Install (1) 8" Gate Valve,

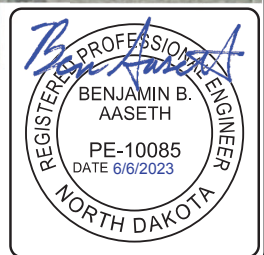
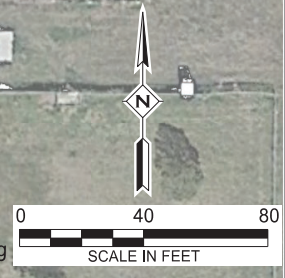
Install (1) 8"x6" Tee,
Install (1) 8" Gate Valve,
Install (1) 6" Gate Valve,

Install 8" PVC Watermain
536 LF (#302 to Hydrant)
Options:
- Horizontal Bore 8" FPVC
- Pipe Burst Existing Line (8" FPVC)
- Open Cut 8" PVC

Install New Hydrant,
Install 14 LF of 8" PVC,
Install (1) 8"x6" Tee,
Install (1) 8" Gate Valve,

(X) Symbol used to show ID of Manholes, Curb Inlets, and Water Gate Valves. See Manhole and Curb Inlet Sheets, and Water Gate Valve Sheet for additional information.

- Notes:
1. All water and sanitary service line locations shown on the plan sheets are approximate and the Contractor to field verify and locate.
 2. New watermain (if bored or open cut) shall be installed 6' maximum from old watermain, and a minimum 10' from sanitary main.



No.	Date	By	Description

2023 Watermain Replacement Project City of Jamestown Jamestown, North Dakota	
Drawn By: PS	Checked By: NCL/BA
Surveyed By: PJ	Designed By: BA
Project No: EC220116	Date: 01/19/2023

Interstate Engineering, Inc.
P.O. Box 2035
Jamestown, ND 58505
Ph: (701) 252-0234
Fax: (701) 252-0203
www.interstateengineering.com
© 2013 Interstate Engineering, Inc. All Rights Reserved

INTERSTATE ENGINEERING
Professionals you need, people you trust.

C13



No.	Date	By	Description

2023 Work Order No. 10085 - Project
 City of Jamestown
 DIS/SEF #703438-1
 Jamestown, North Dakota

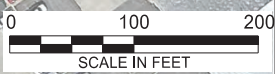
Concentrated Work Zone

Drawn By: PS
 Checked By: INL/BA

Surveiled By: PJ
 Designed By: BA

Project No.: EC200116
 Date: 01/19/2023

Interstate Engineering, Inc.
 P.O. Box 2035
 1503 12th Avenue SW
 Jamestown, ND 58505
 Ph: (701) 252-0234
 Fax: (701) 252-0233
 www.interstateeng.com
 10000 13th Avenue SW, Suite 100, Jamestown, ND 58505



Benjamin B. Aaseth

REGISTERED PROFESSIONAL ENGINEER
 BENJAMIN B. AASETH
 PE-10085
 DATE 6/6/2023
 NORTH DAKOTA

INTERSTATE ENGINEERING
 Professionals you need, people you trust.

T1

Sheet Number