

34 35



CALVARY
CEMETERY

ST. JAMES
FIRST ADD.

16

17TH ST SW

16TH ST SW

17TH AVE SW

16TH AVE. SW

This document is preliminary and not for construction or implementation purposes.

PRELIMINARY

Rev No	Date	By	Description

2021 Watershed Reassessment Project
 Division 2
 City of Jamestown
 Jamestown, North Dakota

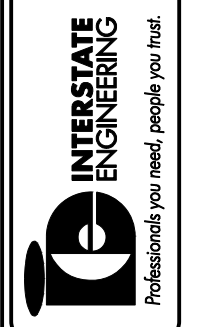
Special Assessment Map - District 21-61

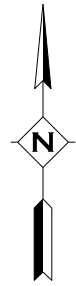
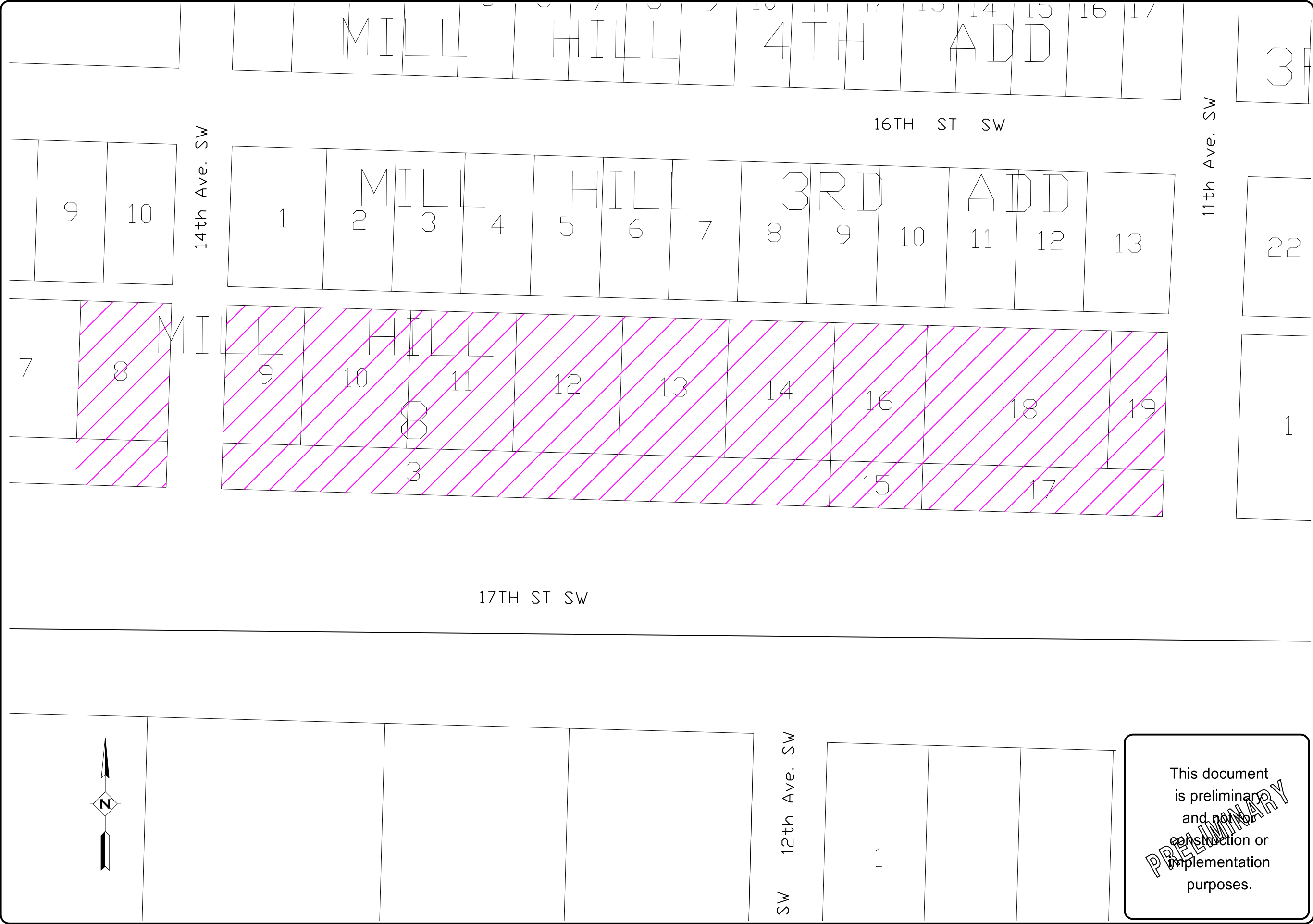
Project No: J20-00-090

Drawn By: PS TD
 Surveyed By: JO BA
 Checked By: TD BA

Interstate Engineering, Inc.
 P.O. Box 2035
 1903 12th Avenue SW
 Jamestown, ND 58402-2035
 Ph (701) 252-0234
 Fax (701) 252-0203
 www.interstateeng.com

Offices in North Dakota, Minnesota, Montana and South Dakota





This document is preliminary and not for construction or implementation purposes.

PRELIMINARY

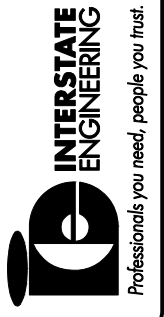
Rev No	Date	By	Description

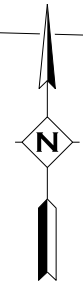
2021 Watershed Replacement Project
 Division 1, Project 2
 City of Jamestown
 Jamestown, North Dakota

Special Assessment Map - District 21-61

Drawn By: PS TD
 Surveyed By: JO BA
 Checked By: PS TD
 Project No: J20-00-090
 Date: J20-00-090

Interstate Engineering, Inc.
 P.O. Box 2035
 1903 12th Avenue SW
 Jamestown, ND 58402-2035
 Ph (701) 252-0234
 Fax (701) 252-0203
 www.interstateeng.com
 Offices in North Dakota, Minnesota, Montana and South Dakota





This document
is preliminary
and not for
construction or
implementation
purposes.

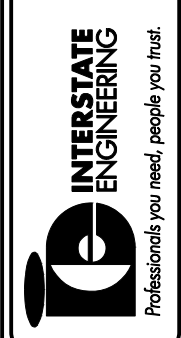
PRELIMINARY

Rev No	Date	By	Description

2021 Watershed Reclamation Project Division 2 City of Jamestown Jamestown, North Dakota	
Special Assessment Map - District 21-61	Project No: J20-00-090 Date:
Drawn By: PS Checked By: TD	Surveyed By: JO Designed By: BA

Interstate Engineering, Inc.
 P.O. Box 2035
 1903 12th Avenue SW
 Jamestown, ND 58402-2035
 Ph (701) 252-0234
 Fax (701) 252-0203
 www.interstateeng.com

Offices in North Dakota, Minnesota, Montana and South Dakota



17TH ST SW

34

35

3

2

CALVARY
CEMETERY

17

ST. JAMES
FIRST ADD.

16

ST. JAMES
FIRST ADD.

15TH AVE. SW

15



This document is preliminary and not for construction or implementation purposes.

PRELIMINARY

Rev No	Date	By	Description

2021 Watermain Replacement Project
City of Jamestown
Jamestown, North Dakota

Special Assessment Map - District XX

Project No: J20-00-090

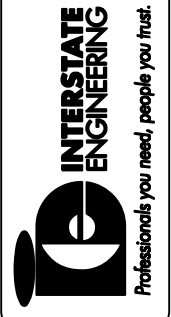
Drawn By: PS
Checked By: TD

Surveyed By: JO
Designed By: BA

Date: _____

Interstate Engineering, Inc.
P.O. Box 2035
1903 12th Avenue SW
Jamestown, ND 58402-2035
Ph (701) 252-0234
Fax (701) 252-0203
www.interstateeng.com

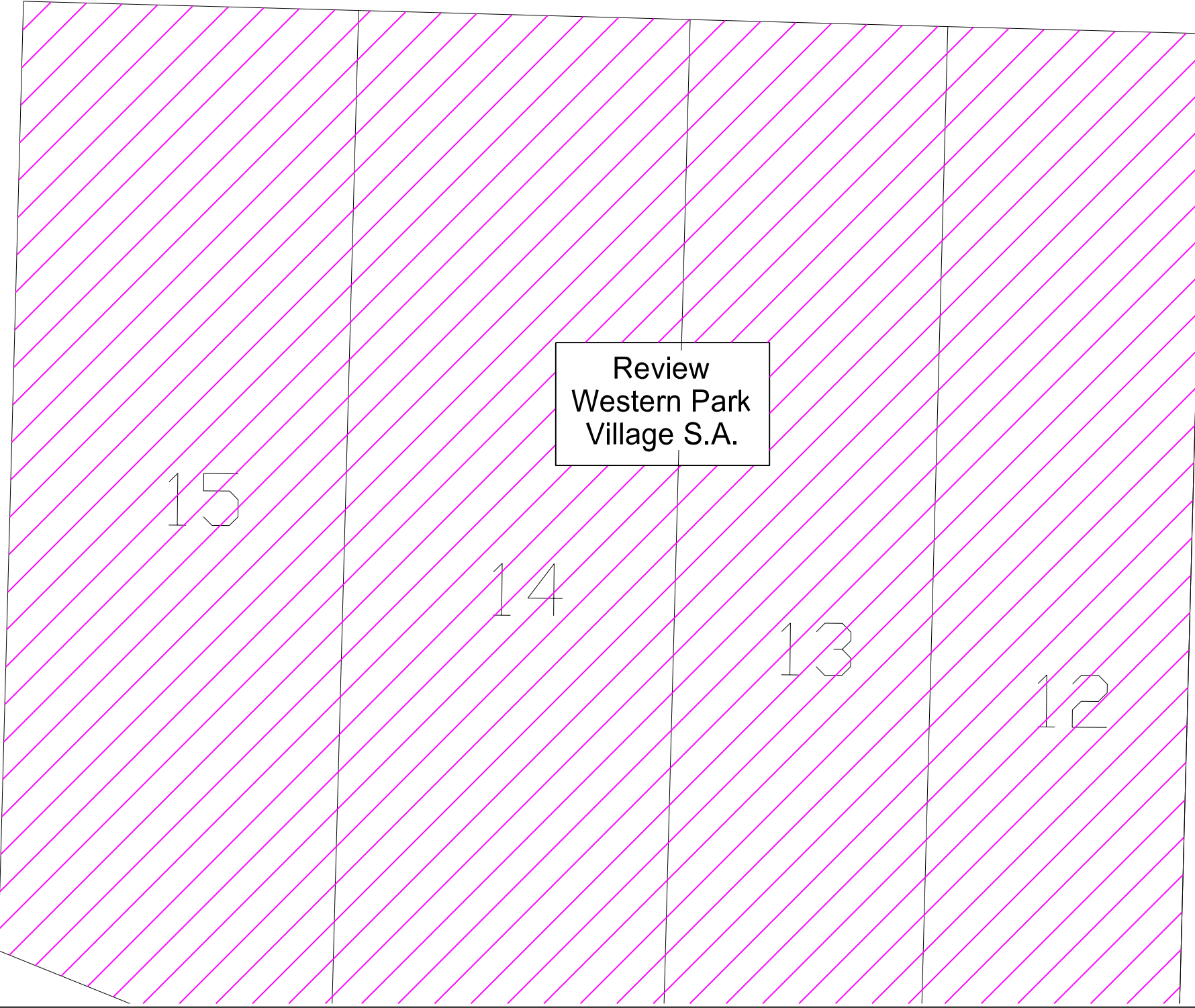
Offices in North Dakota, Minnesota, Montana and South Dakota



17TH ST SW

15TH AVE. SW

12TH AVE. SW



Review
Western Park
Village S.A.

15

14

13

12

14

12

1

3



This document
is preliminary
and not for
construction or
implementation
purposes.

PRELIMINARY

Rev No	Date	By	Description

2021 Watershed Replacement Project
Division 1, Project 2
City of Jamestown
Jamestown, North Dakota

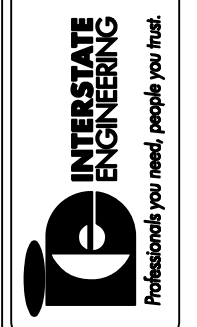
Special Assessment Map - District 21-61

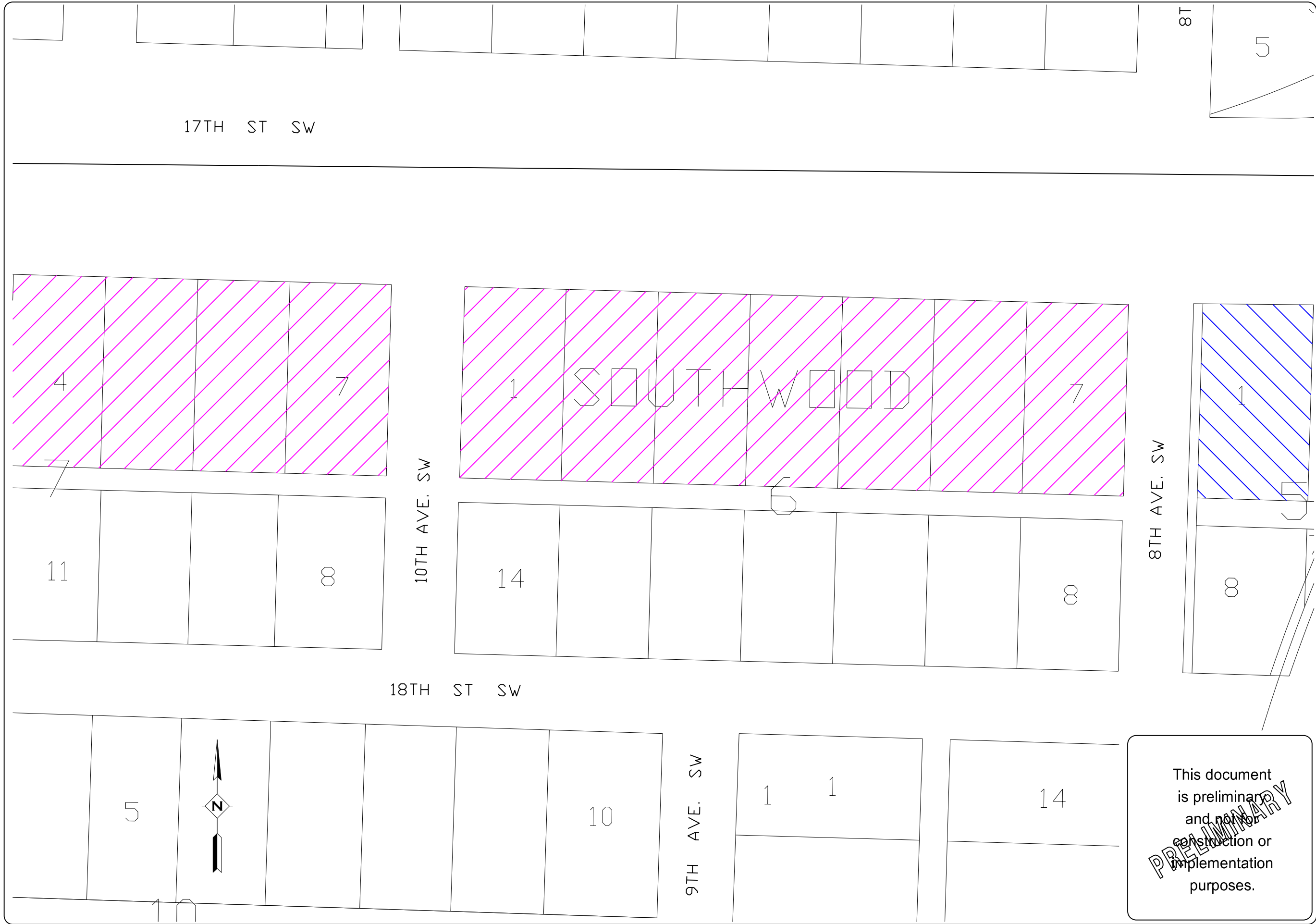
Project No: J20-00-090
Date:

Drawn By: PS TD JO BA
Checked By:

Interstate Engineering, Inc.
P.O. Box 2035
1903 12th Avenue SW
Jamestown, ND 58402-2035
Ph (701) 252-0234
Fax (701) 252-0203
www.interstateeng.com

Offices in North Dakota, Minnesota, Montana and South Dakota





This document is preliminary and not for construction or implementation purposes.

PRELIMINARY

Rev No	Date	By	Description

2021 Watershed Reassessment Project
 Division 1, Precinct 2
 City of Jamestown
 Jamestown, North Dakota

Special Assessment Map - District 21-61

Drawn By: PS
 Checked By: TD

Surveyed By: JO
 Designed By: BA

Project No: J20-00-090
 Date:

Interstate Engineering, Inc.
 P.O. Box 2035
 1903 12th Avenue SW
 Jamestown, ND 58402-2035
 Ph (701) 252-0234
 Fax (701) 252-0203
 www.interstateeng.com

Offices in North Dakota, Minnesota, Montana and South Dakota

