

SEAL COAT, PATCHING, CONSTRUCTION, AND RECONSTRUCTION DISTRICT #22-41 PHASE 1

PATCHING, CRACK SEALING, LEVELING, CURB & GUTTER, MILLING, SPOT EDGE MILLING, AND SEAL COAT

STREETS & AVENUES

PROJECT AREA

DISTRICT BOUNDARY

SCALE: N.T.S.

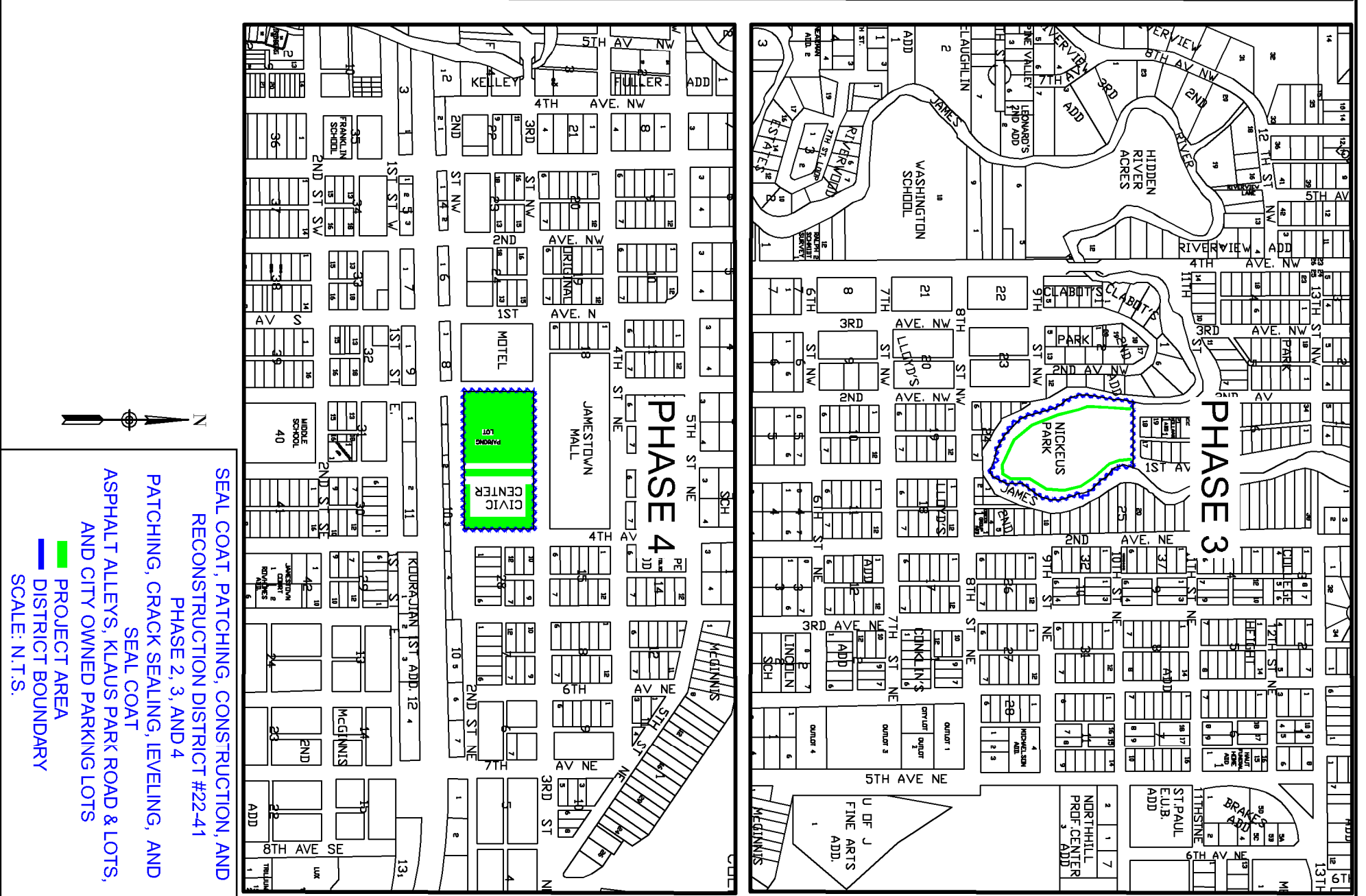
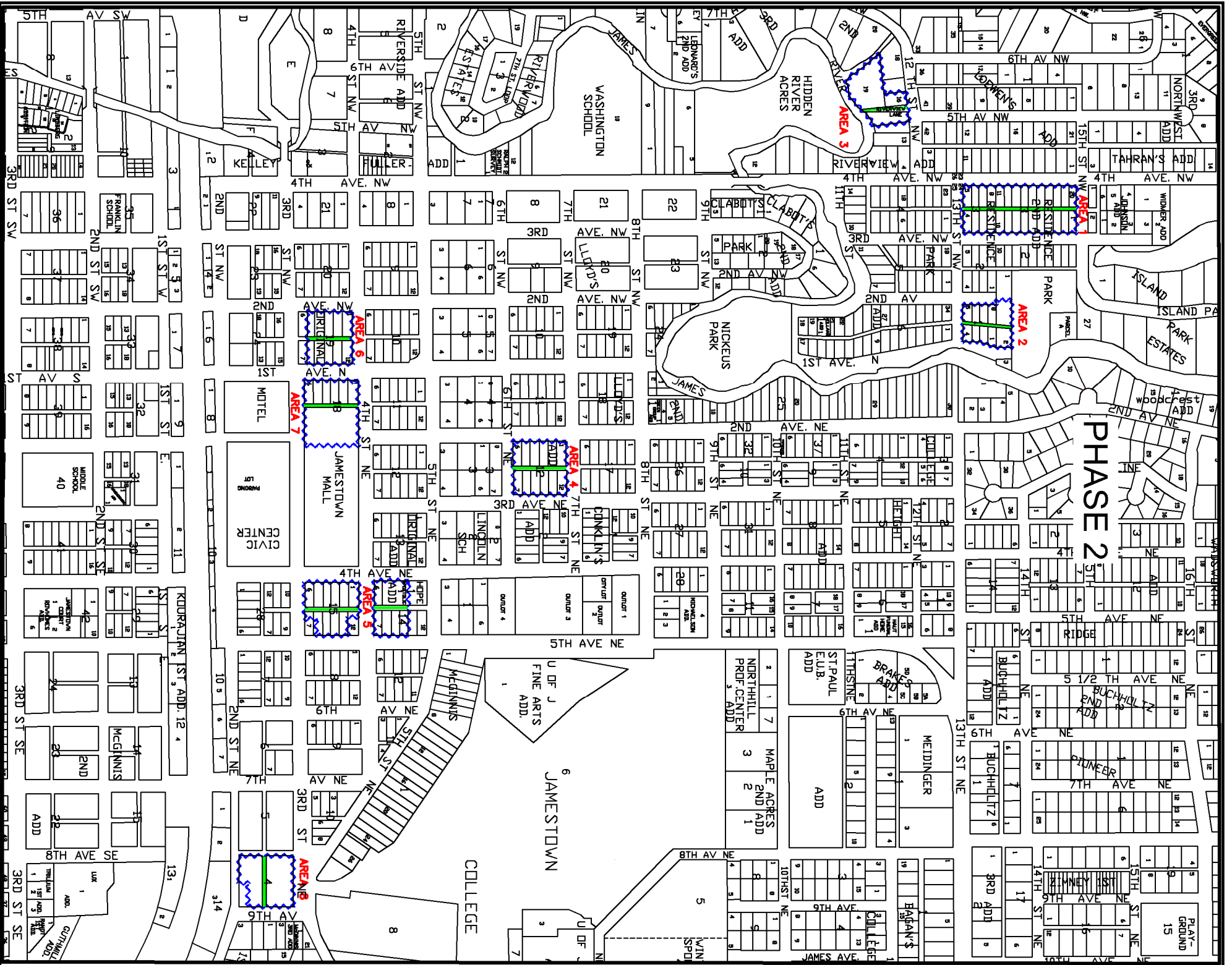
SEAL COAT, PATCHING, CONSTRUCTION & RECONSTRUCTION DISTRICT #22-41 PHASE I
 PATCHING, CRACK SEALING, LEVELING, CURB & GUTTER, MILLING, SPOT EDGE MILLING, AND SEAL COAT, STREETS & AVENUES.

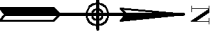


CITY OF JAMESTOWN
 ENGINEERING DEPARTMENT

DRAWN BY
 JLL

DATE
 1/5/2022





 N
 SEAL COAT, PATCHING, CONSTRUCTION, AND RECONSTRUCTION DISTRICT #22-41 PHASE 2, 3, AND 4
 PATCHING, CRACK SEALING, LEVELING, AND SEAL COAT
 ASPHALT ALLEYS, KLAUS PARK ROAD & LOTS, AND CITY OWNED PARKING LOTS
 PROJECT AREA
 DISTRICT BOUNDARY
 SCALE: N.T.S.