

I hereby certify that this plan, specification, or report was prepared by me or under my direct supervision and that I am a duly Registered Professional Engineer under the laws of the State of North Dakota.

TRAVIS DILLMAN, P.E.  
Date: 4/1/2020

REVISIONS	

ENGINEERING DEPARTMENT  

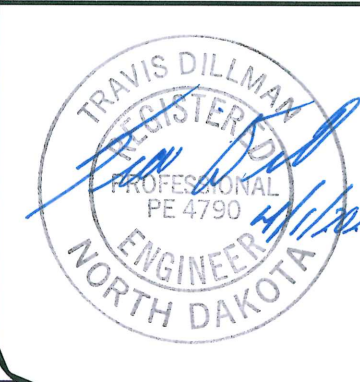
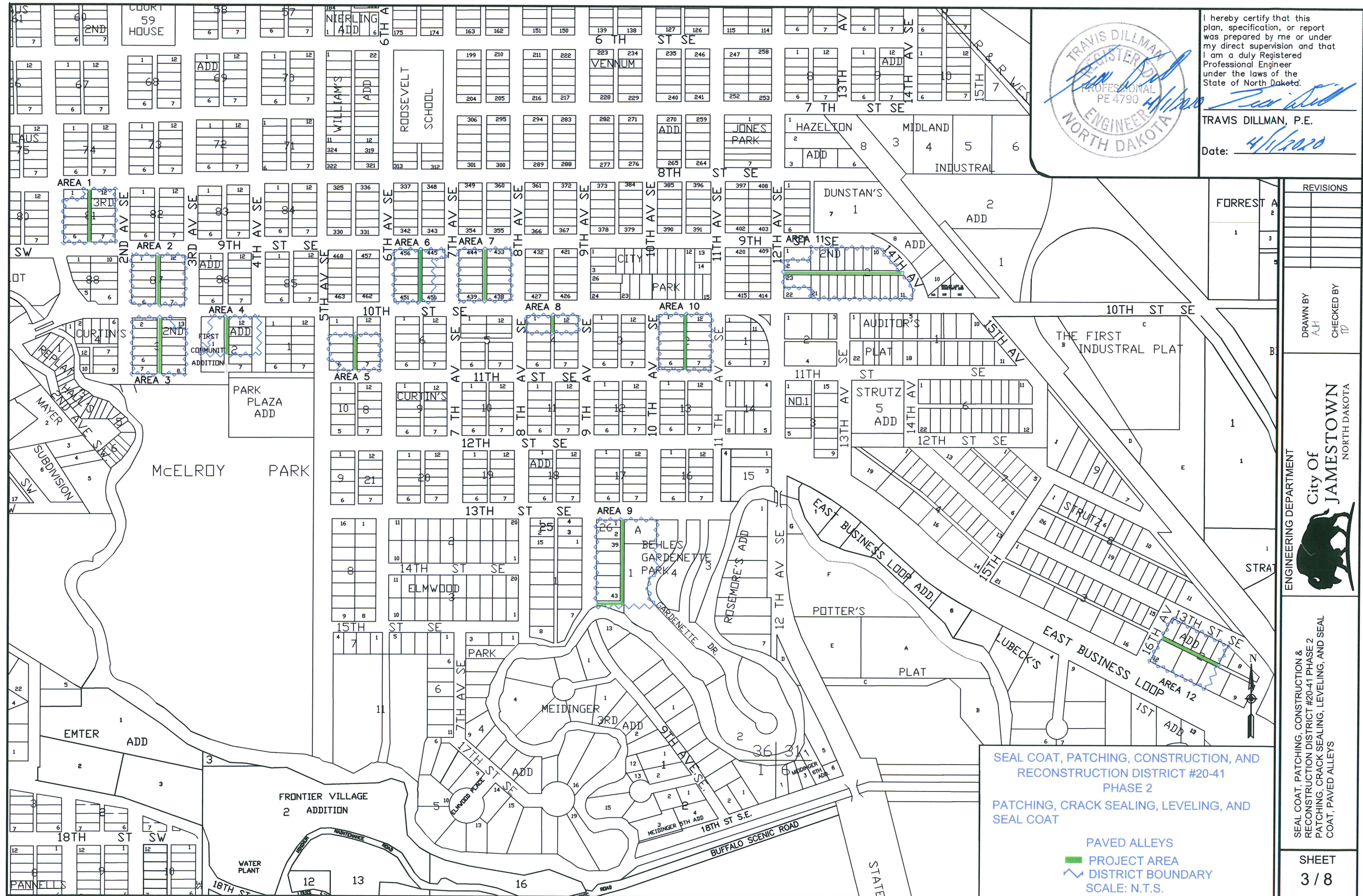
 City of JAMESTOWN  
 NORTH DAKOTA

SEAL COAT, PATCHING, CONSTRUCTION & RECONSTRUCTION DISTRICT #20-41 PHASE I  
 PATCHING, CRACK SEALING, LEVELING, CURB & GUTTER, MILLING, SPOT EDGE MILLING, AND SEAL COAT, STREETS & AVENUES.

SHEET  
2 / 8

SEAL COAT, PATCHING, CONSTRUCTION, AND RECONSTRUCTION DISTRICT #20-41 PHASE 1  
 PATCHING, CRACK SEALING, LEVELING, CURB & GUTTER, MILLING, SPOT EDGE MILLING, AND SEAL COAT  
 STREETS & AVENUES  
 PROJECT AREA  
 DISTRICT BOUNDARY





I hereby certify that this plan, specification, or report was prepared by me or under my direct supervision and that I am a duly Registered Professional Engineer under the laws of the State of North Dakota.

TRAVIS DILLMAN, P.E.  
Date: 4/1/2020

REVISIONS	

DRAWN BY: AJH  
CHECKED BY: TD



ENGINEERING DEPARTMENT

SEAL COAT, PATCHING, CONSTRUCTION & RECONSTRUCTION DISTRICT #20-41 PHASE 2  
PATCHING, CRACK SEALING, LEVELING, AND SEAL COAT, PAVED ALLEYS

SEAL COAT, PATCHING, CONSTRUCTION, AND RECONSTRUCTION DISTRICT #20-41 PHASE 2  
PATCHING, CRACK SEALING, LEVELING, AND SEAL COAT

PAVED ALLEYS  
PROJECT AREA  
DISTRICT BOUNDARY  
SCALE: N.T.S.



I hereby certify that this plan, specification, or report was prepared by me or under my direct supervision and that I am a duly Registered Professional Engineer under the laws of the State of North Dakota.

*Travis Dillman*  
 TRAVIS DILLMAN, P.E.  
 Date: 4/1/2020

REVISIONS	

DRAWN BY  
A/H

CHECKED BY  
T/D

ENGINEERING DEPARTMENT  
 City Of  
**JAMESTOWN**  
 NORTH DAKOTA

SEAL COAT, PATCHING, CONSTRUCTION & RECONSTRUCTION DISTRICT #20-41 PHASE 3  
 CONSTRUCTION, PATCHING, CRACK SEALING, LEVELING, AND SEAL COAT, BALER ROADS

SEAL COAT, PATCHING, CONSTRUCTION, AND RECONSTRUCTION DISTRICT #20-41 PHASE 3  
 CONSTRUCTION, PATCHING, CRACK SEALING, LEVELING, AND SEAL COAT

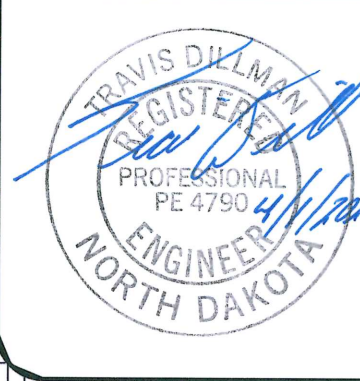
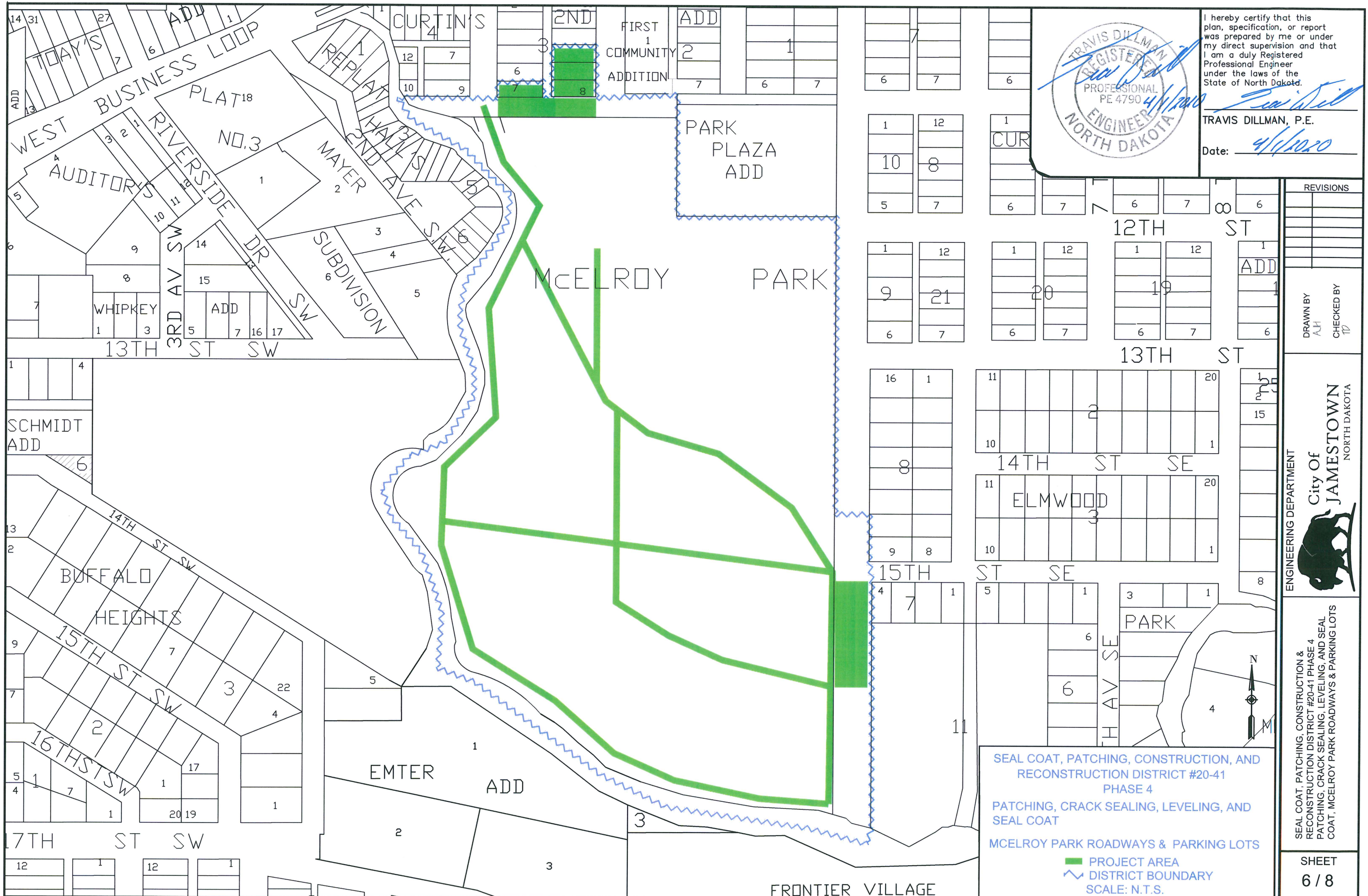
BALER ROADS  
 PROJECT AREA  
 DISTRICT BOUNDARY  
 SCALE: N.T.S.

INDUSTRIAL PARK

COUNTY ROAD 39

AUDITORS  
 LOT 5-4

AUDITORS LOT 5-3



I hereby certify that this plan, specification, or report was prepared by me or under my direct supervision and that I am a duly Registered Professional Engineer under the laws of the State of North Dakota.

TRAVIS DILLMAN, P.E.  
Date: 4/1/2020

REVISIONS	

DRAWN BY: AJH  
CHECKED BY: TD

ENGINEERING DEPARTMENT  
City of JAMESTOWN  
NORTH DAKOTA

SEAL COAT, PATCHING, CONSTRUCTION, AND RECONSTRUCTION DISTRICT #20-41 PHASE 4  
 PATCHING, CRACK SEALING, LEVELING, AND SEAL COAT  
 MCELROY PARK ROADWAYS & PARKING LOTS

PROJECT AREA  
 DISTRICT BOUNDARY  
 SCALE: N.T.S.

SEAL COAT, PATCHING, CONSTRUCTION & RECONSTRUCTION DISTRICT #20-41 PHASE 4  
 PATCHING, CRACK SEALING, LEVELING, AND SEAL COAT, MCELROY PARK ROADWAYS & PARKING LOTS

SHEET  
6 / 8



I hereby certify that this plan, specification, or report was prepared by me or under my direct supervision and that I am a duly Registered Professional Engineer under the laws of the State of North Dakota.

TRAVIS DILLMAN, P.E.

Date: 4/1/2020

REVISIONS	

DRAWN BY  
A.H.

CHECKED BY  
TD



ENGINEERING DEPARTMENT

SEAL COAT, PATCHING, CONSTRUCTION & RECONSTRUCTION DISTRICT #20-41 PHASE 5 FULL-WIDTH MILL AND OVERLAY, STREETS & AVENUES

SEAL COAT, PATCHING, CONSTRUCTION, AND RECONSTRUCTION DISTRICT #20-41 PHASE 5 FULL-WIDTH MILL AND OVERLAY

STREETS & AVENUES

PROJECT AREA

DISTRICT BOUNDARY

SCALE: N.T.S.



I hereby certify that this plan, specification, or report was prepared by me or under my direct supervision and that I am a duly Registered Professional Engineer under the laws of the State of North Dakota.

*Travis Dillman*  
 TRAVIS DILLMAN, P.E.

Date: 4/1/2020

REVISIONS	

DRAWN BY AJH	CHECKED BY TD
-----------------	------------------

ENGINEERING DEPARTMENT  
 City Of  
**JAMESTOWN**  
 NORTH DAKOTA

# JAMESTOWN MUNICIPAL AIRPORT



SEAL COAT, PATCHING, CONSTRUCTION, AND RECONSTRUCTION DISTRICT #20-41  
 PHASE 5  
 SEAL COAT

AIRPORT PARKING LOT

PROJECT AREA

DISTRICT BOUNDARY

SCALE: N.T.S.

SEAL COAT, PATCHING, CONSTRUCTION & RECONSTRUCTION DISTRICT #20-41 PHASE 6  
 SEAL COAT, AIRPORT PARKING LOT