



PRELIMINARY

I hereby certify that this plan, specification, or report was prepared by me or under my direct supervision and that I am a duly Registered Professional Engineer under the laws of the State of North Dakota.

TRAVIS DILLMAN, P.E.

Date: \_\_\_\_\_

REVISIONS


DRAWN BY  
AJH  
CHECKED BY  
TD

ENGINEERING DEPARTMENT  
City Of  
JAMESTOWN  
NORTH DAKOTA



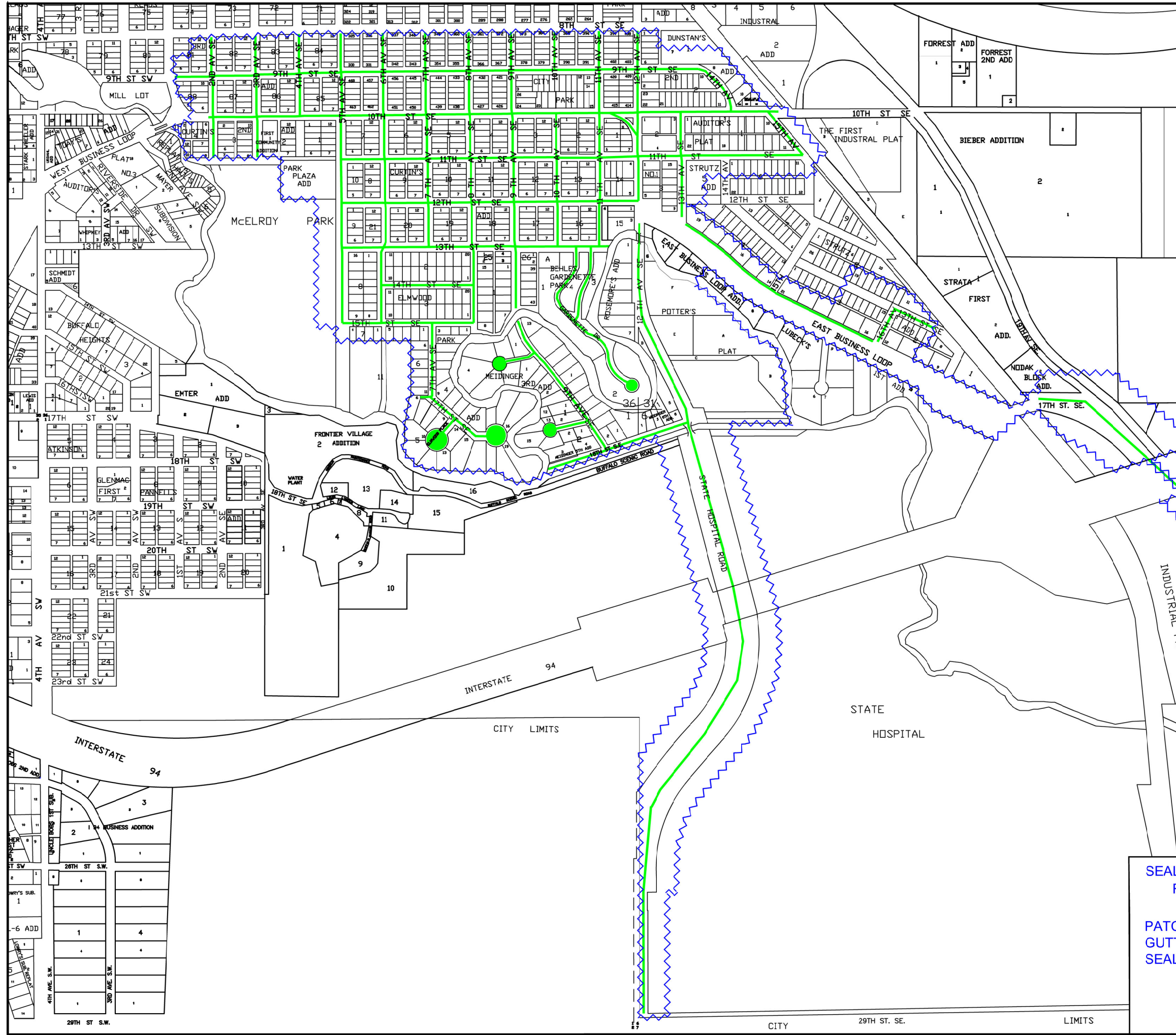
SEAL COAT, PATCHING, CONSTRUCTION  
& RECONSTRUCTION DISTRICT #20-41  
TITLE SHEET

SHEET  
1 / 8

# SEAL COAT, PATCHING, CONSTRUCTION, AND RECONSTRUCTION DISTRICT #20-41

- PHASE 1- PATCHING, CRACK SEALING, LEVELING, CURB & GUTTER, MILLING, SPOT EDGE MILLING, AND SEAL COAT, STREETS & AVENUES
- PHASE 2- PATCHING, CRACK SEALING, LEVELING, AND SEAL COAT ASPHALT ALLEYS
- PHASE 3- CONSTRUCTION, PATCHING, CRACK SEALING, LEVELING, MILLING, AND SEAL COAT, BALER ROADS
- PHASE 4- PATCHING, CRACK SEALING, LEVELING, MILLING, AND SEAL COAT, MCELROY PARK ROADWAYS & PARKING LOTS
- PHASE 5- FULL WIDTH MILLING, STREETS & AVENUES,
- PHASE 6- SEAL COAT, AIRPORT PARKING LOT

# JAMESTOWN, NORTH DAKOTA



I hereby certify that this plan, specification, or report was prepared by me or under my direct supervision and that I am a duly Registered Professional Engineer under the laws of the State of North Dakota.

TRAVIS DILLMAN, P.E.

Date: \_\_\_\_\_

PRELIMINARY

REVISIONS	

DRAWN BY	CHECKED BY
ALH	TD

ENGINEERING DEPARTMENT

City of  
**JAMESTOWN**  
NORTH DAKOTA



SEAL COAT, PATCHING, CONSTRUCTION AND RECONSTRUCTION DISTRICT #20-41 PHASE I

SEAL COAT, PATCHING, CONSTRUCTION AND RECONSTRUCTION DISTRICT #20-41 PHASE I  
 & RECONSTRUCTION DISTRICT #20-41 PHASE I  
 PATCHING, CRACK SEALING, LEVELING, CURB & GUTTER, MILLING, SPOT EDGE MILLING, AND SEAL COAT, STREETS & AVENUES.

**SEAL COAT, PATCHING, CONSTRUCTION, AND RECONSTRUCTION DISTRICT #20-41 PHASE 1**

**PATCHING, CRACK SEALING, LEVELING, CURB & GUTTER, MILLING, SPOT EDGE MILLING, AND SEAL COAT**

**STREETS & AVENUES**

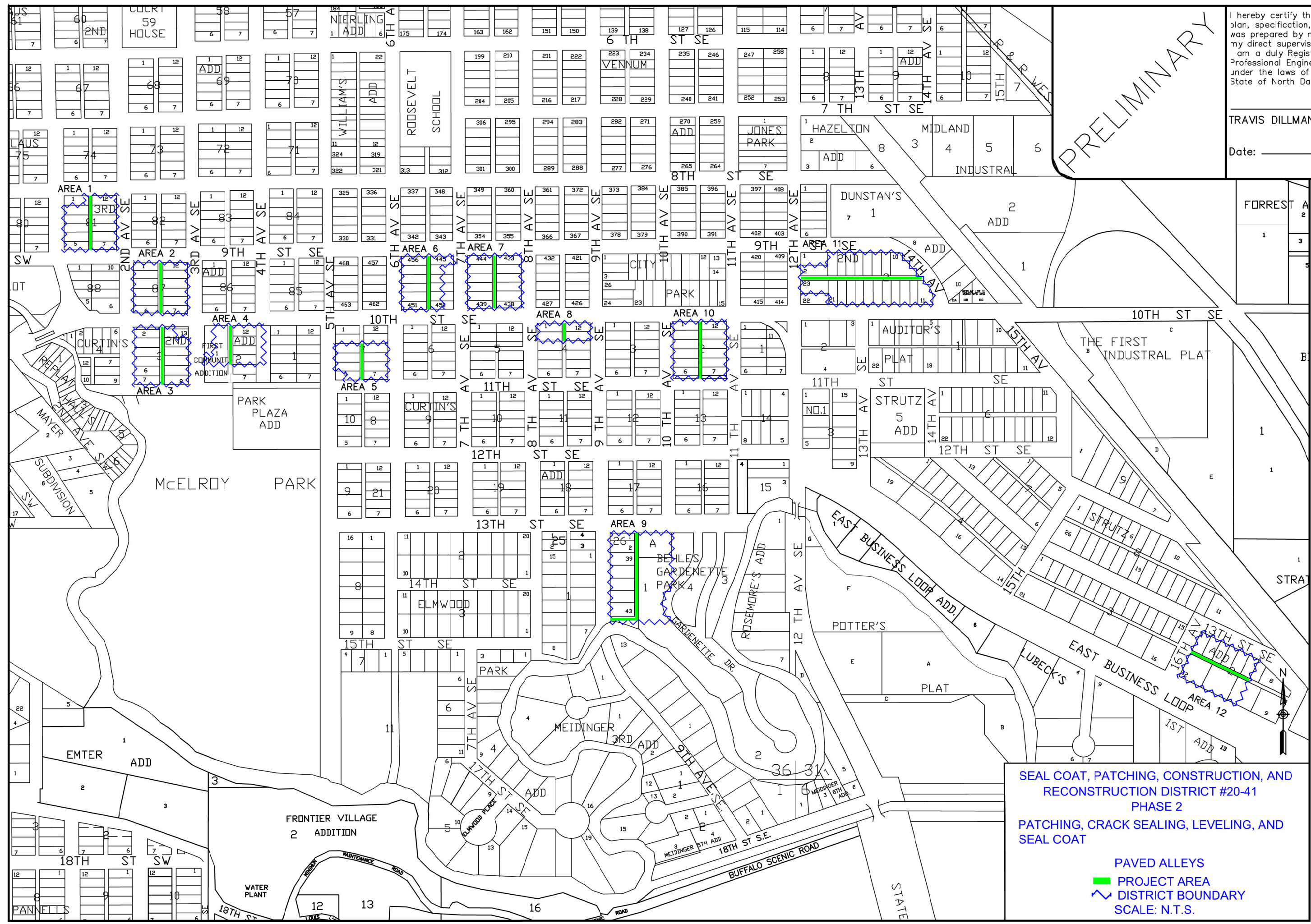
█ **PROJECT AREA**

- - - **DISTRICT BOUNDARY**

**SCALE: N.T.S.**







PRELIMINARY

I hereby certify that this plan, specification, or report was prepared by me or under my direct supervision and that I am a duly Registered Professional Engineer under the laws of the State of North Dakota.

TRAVIS DILLMAN, P.E.

Date: \_\_\_\_\_

REVISIONS	

ENGINEERING DEPARTMENT  
 City of  
**JAMESTOWN**  
 NORTH DAKOTA



SEAL COAT, PATCHING, CONSTRUCTION, AND RECONSTRUCTION DISTRICT #20-41 PHASE 2  
 PATCHING, CRACK SEALING, LEVELING, AND SEAL COAT

PAVED ALLEYS  
 PROJECT AREA  
 DISTRICT BOUNDARY  
 SCALE: N.T.S.

SEAL COAT, PATCHING, CONSTRUCTION & RECONSTRUCTION DISTRICT #20-41 PHASE 2  
 PATCHING, CRACK SEALING, LEVELING, AND SEAL COAT, PAVED ALLEYS

SHEET  
**3 / 8**

PRELIMINARY

I hereby certify that this plan, specification, or report was prepared by me or under my direct supervision and that I am a duly Registered Professional Engineer under the laws of the State of North Dakota.

TRAVIS DILLMAN, P.E.

Date: \_\_\_\_\_

REVISIONS


DRAWN BY	CHECKED BY
AJH	TD

ENGINEERING DEPARTMENT  
 City of  
**JAMESTOWN**  
 NORTH DAKOTA



SEAL COAT, PATCHING, CONSTRUCTION & RECONSTRUCTION DISTRICT #20-41 PHASE 3  
 CONSTRUCTION, PATCHING, CRACK SEALING, LEVELING, AND SEAL COAT, BALER ROADS

SHEET  
**4 / 8**



SEAL COAT, PATCHING, CONSTRUCTION, AND RECONSTRUCTION DISTRICT #20-41 PHASE 3  
 CONSTRUCTION, PATCHING, CRACK SEALING, LEVELING, AND SEAL COAT  
 BALER ROADS  
 PROJECT AREA  
 DISTRICT BOUNDARY  
 SCALE: N.T.S.

AUDITORS

LOT 5-4

AUDITORS LOT 5-3

COUNTY ROAD 39

INDUSTRIAL PARK



PRELIMINARY

I hereby certify that this plan, specification, or report was prepared by me or under my direct supervision and that I am a duly Registered Professional Engineer under the laws of the State of North Dakota.

TRAVIS DILLMAN, P.E.

Date: \_\_\_\_\_



REVISIONS	



DRAWN BY  
ALH

CHECKED BY  
TD

ENGINEERING DEPARTMENT  
City of  
**JAMESTOWN**  
NORTH DAKOTA



SEAL COAT, PATCHING, CONSTRUCTION & RECONSTRUCTION DISTRICT #20-41 PHASE 3  
CONSTRUCTION, PATCHING, CRACK SEALING, LEVELING, AND SEAL COAT, BALER ROADS

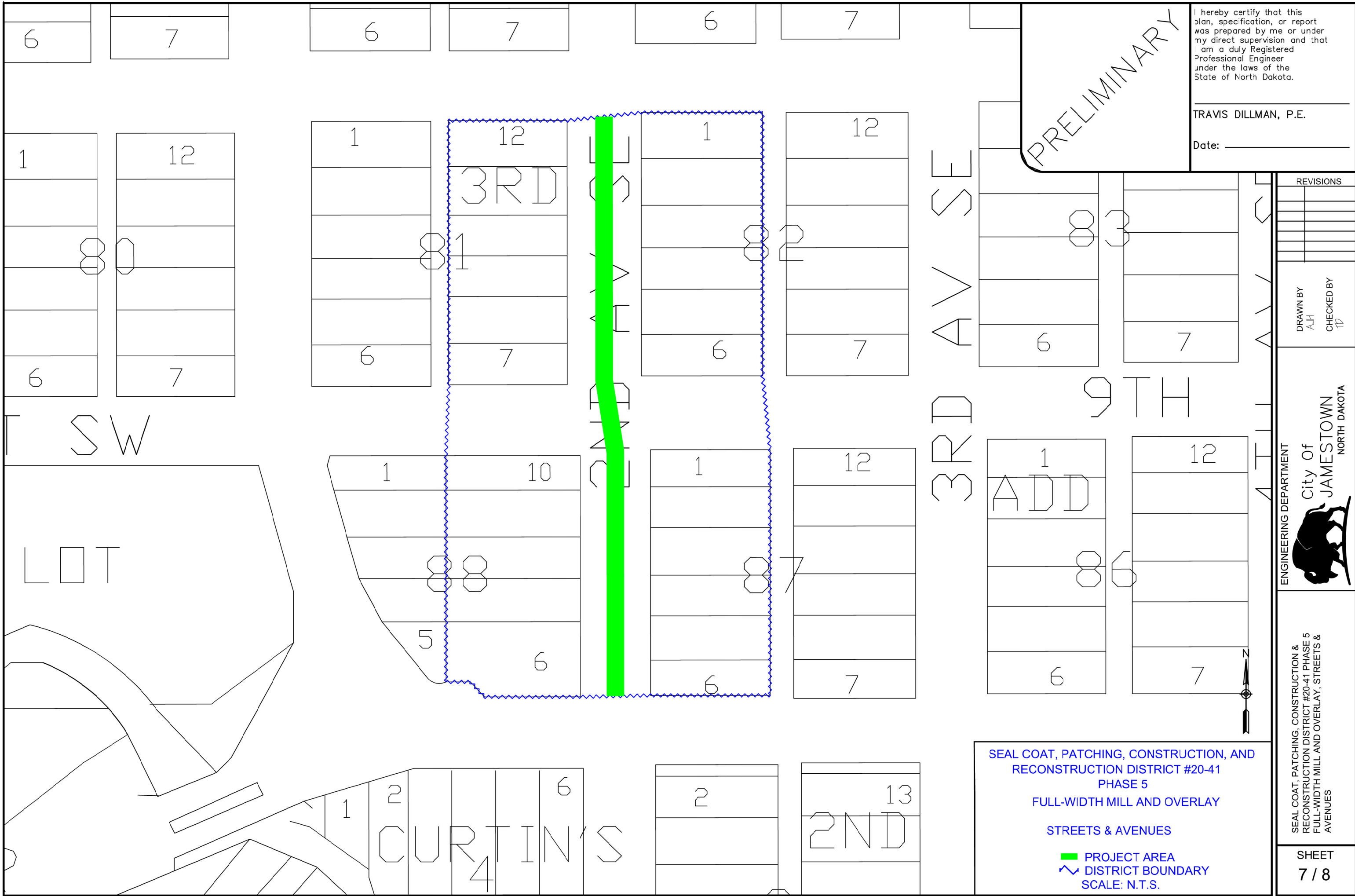
SEAL COAT, PATCHING, CONSTRUCTION, AND RECONSTRUCTION DISTRICT #20-41 PHASE 3  
CONSTRUCTION, PATCHING, CRACK SEALING, LEVELING, AND SEAL COAT  
BALER ROADS  
 PROPOSED ASPHALT  
 DISTRICT BOUNDARY  
 SCALE: N.T.S.

SHEET  
**5 / 8**









PRELIMINARY

I hereby certify that this plan, specification, or report was prepared by me or under my direct supervision and that I am a duly Registered Professional Engineer under the laws of the State of North Dakota.

TRAVIS DILLMAN, P.E.

Date: \_\_\_\_\_

REVISIONS

NO.	DESCRIPTION

DRAWN BY  
AJH

CHECKED BY  
TD

ENGINEERING DEPARTMENT

City of  
JAMESTOWN  
NORTH DAKOTA



SEAL COAT, PATCHING, CONSTRUCTION & RECONSTRUCTION DISTRICT #20-41 PHASE 5 FULL-WIDTH MILL AND OVERLAY, STREETS & AVENUES

SHEET  
7 / 8

SEAL COAT, PATCHING, CONSTRUCTION, AND RECONSTRUCTION DISTRICT #20-41 PHASE 5 FULL-WIDTH MILL AND OVERLAY STREETS & AVENUES

PROJECT AREA  
DISTRICT BOUNDARY  
SCALE: N.T.S.

PRELIMINARY

I hereby certify that this plan, specification, or report was prepared by me or under my direct supervision and that I am a duly Registered Professional Engineer under the laws of the State of North Dakota.

TRAVIS DILLMAN, P.E.

Date: \_\_\_\_\_

REVISIONS

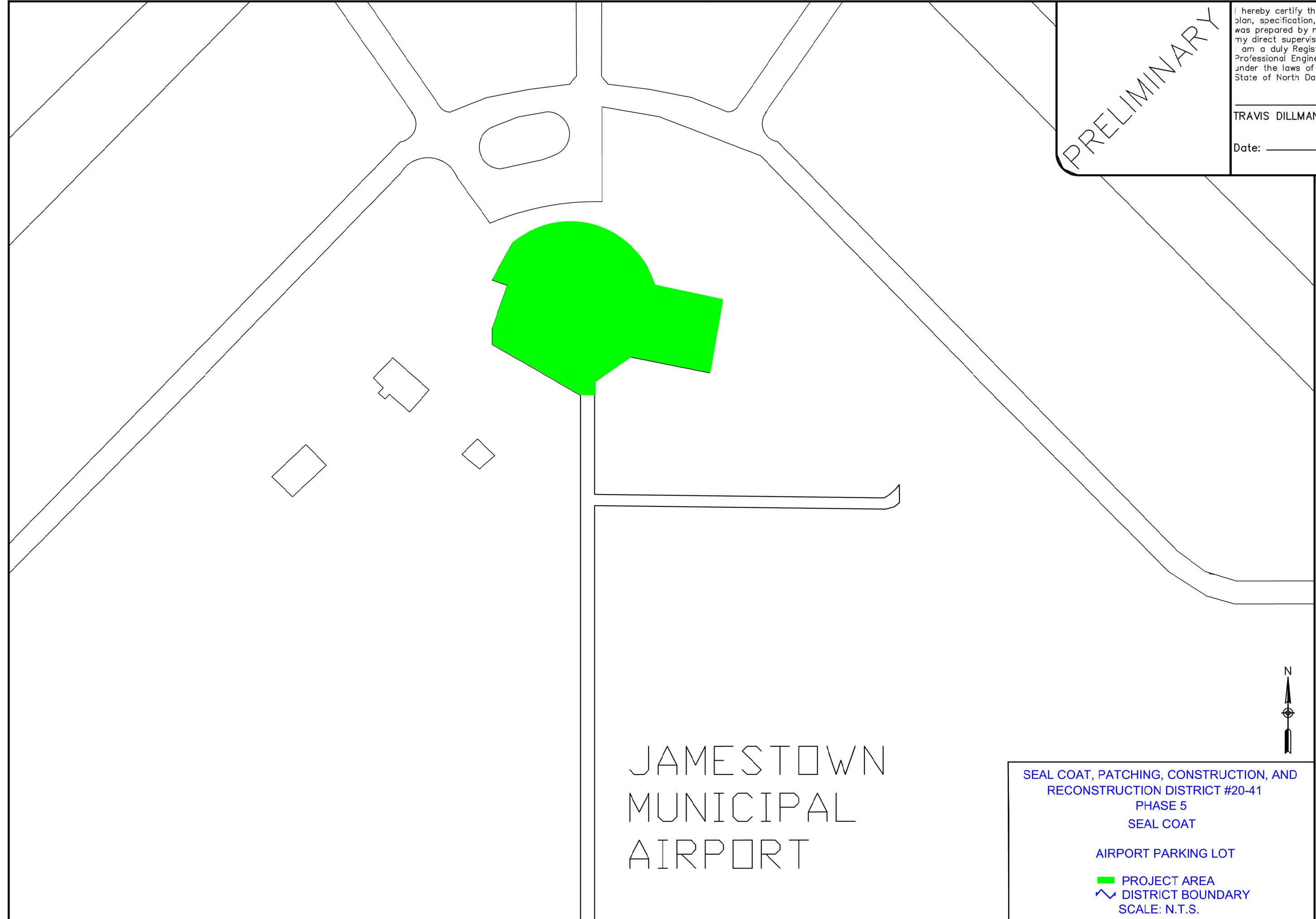

DRAWN BY  
AJH  
CHECKED BY  
TD

ENGINEERING DEPARTMENT  
City of  
JAMESTOWN  
NORTH DAKOTA



SEAL COAT, PATCHING, CONSTRUCTION & RECONSTRUCTION DISTRICT #20-41 PHASE 6  
SEAL COAT, AIRPORT PARKING LOT

SHEET  
8 / 8





JAMESTOWN  
MUNICIPAL  
AIRPORT



SEAL COAT, PATCHING, CONSTRUCTION, AND RECONSTRUCTION DISTRICT #20-41  
PHASE 5  
SEAL COAT

AIRPORT PARKING LOT

 PROJECT AREA  
 DISTRICT BOUNDARY  
SCALE: N.T.S.