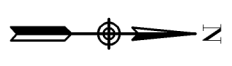
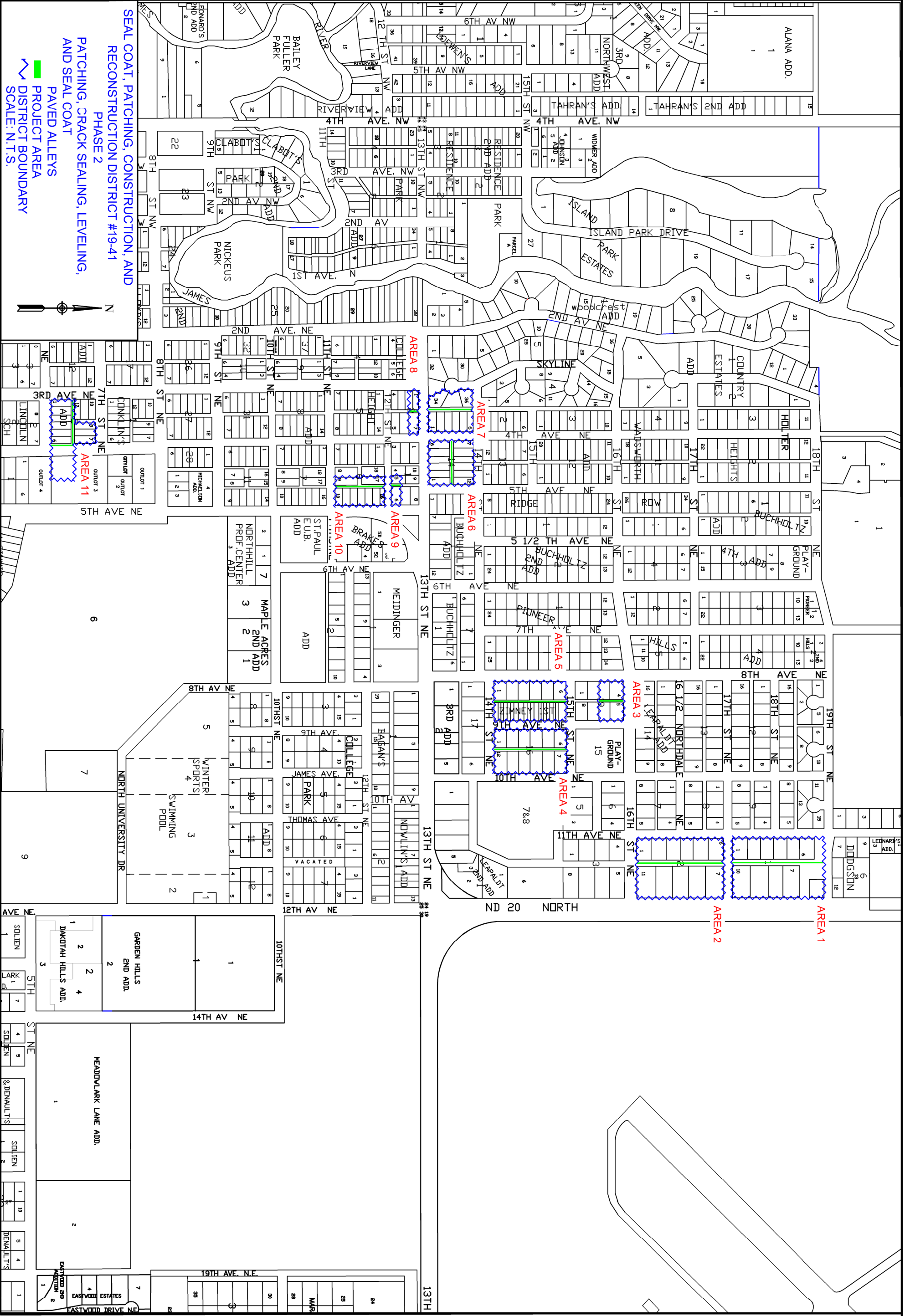


SEAL COAT, PATCHING, CONSTRUCTION, AND RECONSTRUCTION DISTRICT #19-41 PHASE 1
 PATCHING, CRACK SEALING, LEVELING, CURB & GUTTER, MILLING, SPOT EDGE MILLING, AND SEAL COAT
 STREETS & AVENUES
 PROJECT AREA
 DISTRICT BOUNDARY
 SCALE: N.T.S.





SEAL COAT, PATCHING, CONSTRUCTION, AND RECONSTRUCTION DISTRICT #19-41 PHASE 2
 PATCHING, CRACK SEALING, LEVELING, AND SEAL COAT
 PAVED ALLEYS
 PROJECT AREA
 DISTRICT BOUNDARY
 SCALE: N.T.S.



SEAL COAT, PATCHING, CONSTRUCTION & RECONSTRUCTION DISTRICT #19-41 PHASE II
 PATCHING, CRACK SEALING, LEVELING, AND SEAL COAT, PAVED ALLEYS
 SHEET
 3/6

CITY OF JAMESTOWN
 ENGINEERING DEPARTMENT

DRAWN BY
 AJH
 DATE
 10/30/18





SEAL COAT, PATCHING, CONSTRUCTION, AND RECONSTRUCTION DISTRICT #19-41

PHASE 3

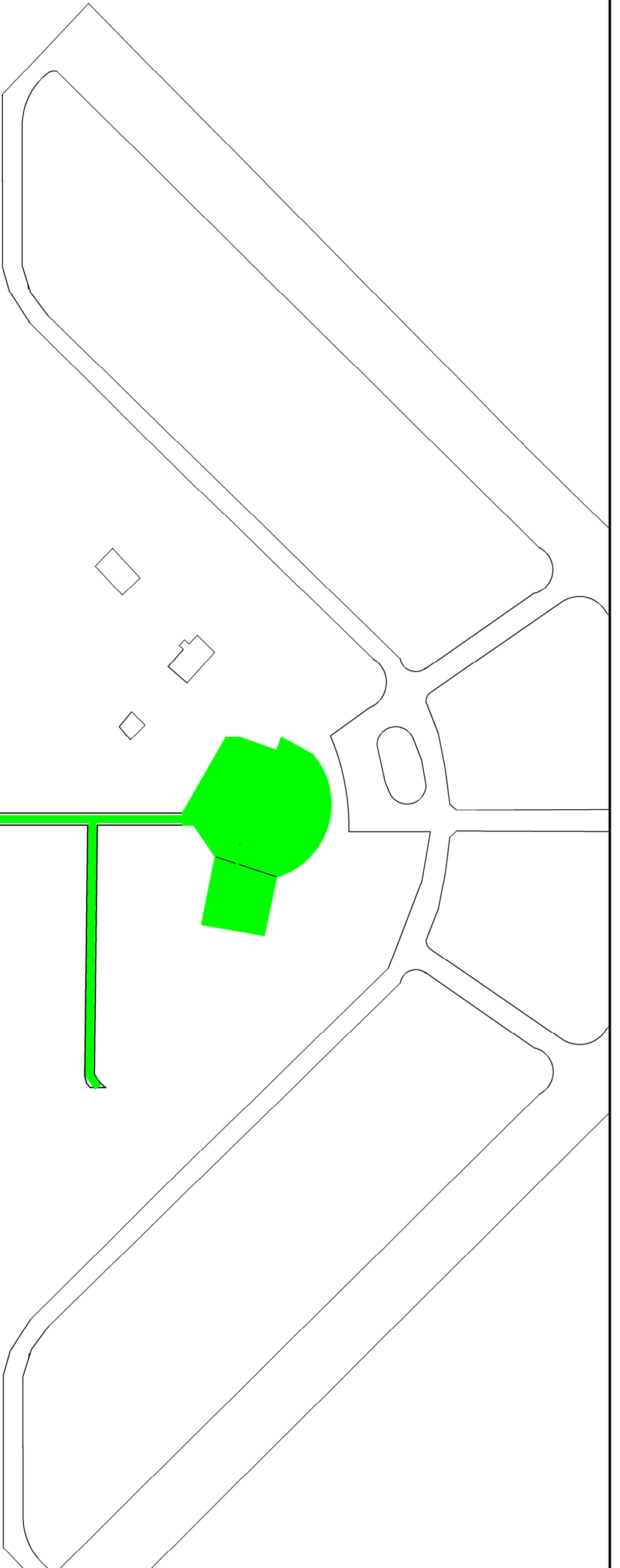
PATCHING, CRACK SEALING, MILLING, LEVELING, AND SEAL COAT

AIRPORT

PROJECT AREA

DISTRICT BOUNDARY

SCALE: N.T.S.



JAMESTOWN
MUNICIPAL
AIRPORT

13TH ST NE (OLD HIGHWAY 10)



City Of
JAMESTOWN
NORTH DAKOTA

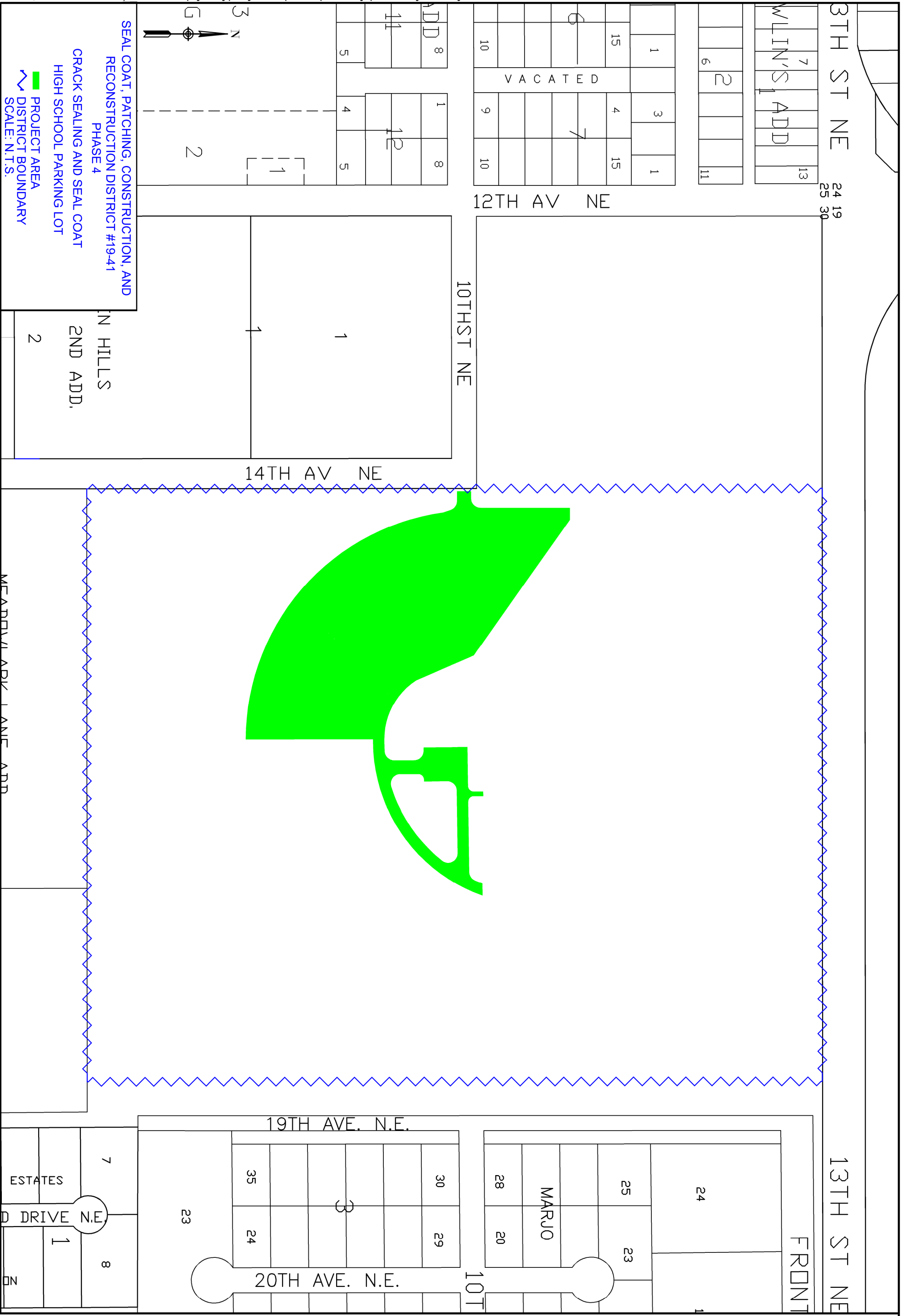
CITY OF JAMESTOWN
ENGINEERING DEPARTMENT

DRAWN BY
AJH

DATE
10/30/18

SEAL COAT, PATCHING, CONSTRUCTION & RECONSTRUCTION DISTRICT #19-41 PHASE III
PATCHING, CRACK SEALING, MILLING, LEVELING, AND SEAL COAT, AIRPORT

SHEET
4 / 6



SEAL COAT, PATCHING, CONSTRUCTION & RECONSTRUCTION DISTRICT #19-41 PHASE IV CRACK SEALING AND SEAL COAT, HIGH SCHOOL PARKING LOT

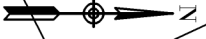
SHEET 5/6

CITY OF JAMESTOWN
ENGINEERING DEPARTMENT

DRAWN BY
AJH

DATE
4/15/2015





SEAL COAT, PATCHING, CONSTRUCTION, AND RECONSTRUCTION DISTRICT #19-41 PHASE 5

FULL WIDTH MILLING STREETS & AVENUES

PROJECT AREA DISTRICT BOUNDARY SCALE: N.T.S.

